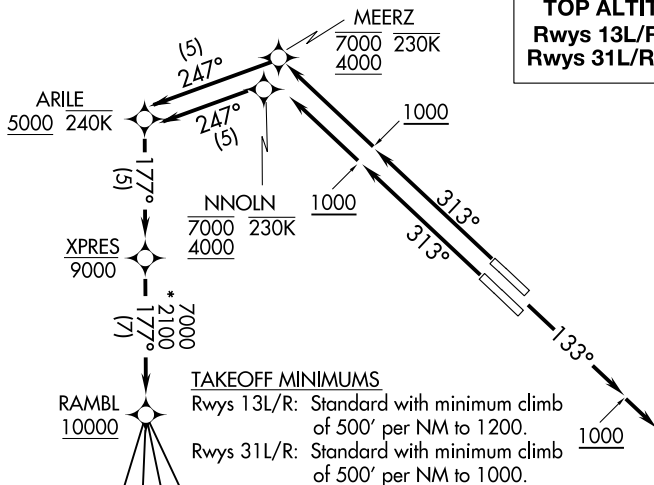


DALLAS LOVE FLD (DAL)
DALLAS, TEXAS

RAMBL SIX DEPARTURE (RNAV)

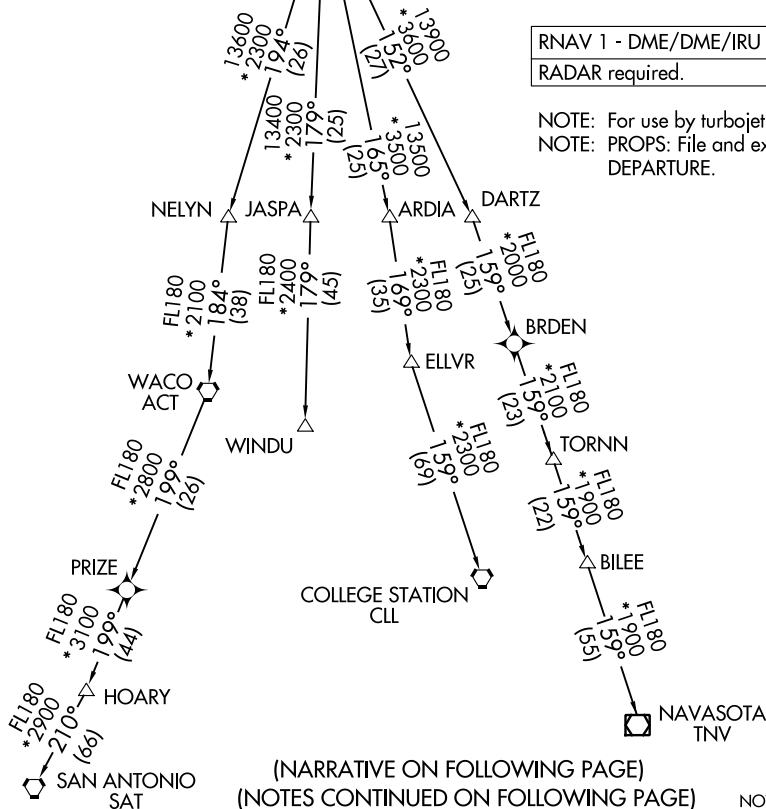
D-ATIS
120.15
CLNC DEL
127.9
CPDLC
GND CON
121.75 348.6
LOVE TOWER
123.7 239.3
REGIONAL DEP CON
126.475 363.15

TOP ALTITUDE:
Rwys 13L/R: 3000
Rwys 31L/R: 10000



RNAV 1 - DME/DME/IRU or GPS required.
RADAR required.

NOTE: For use by turbojet aircraft only.
NOTE: PROPS: File and expect JOE POOL
DEPARTURE.



(NARRATIVE ON FOLLOWING PAGE)
(NOTES CONTINUED ON FOLLOWING PAGE)

NOTE: Chart not to scale.

RAMBL SIX DEPARTURE (RNAV)

(RAMBL6.RAMBL) 29DEC22

DALLAS LOVE FLD (DAL) DALLAS, TEXAS

SC-2, 21 MAR 2024 to 18 APR 2024



DEPARTURE ROUTE DESCRIPTION

TAKEOFF RUNWAYS 13L/R: Climb on heading 133° to 1000, then on heading 133° or as assigned by ATC, maintain 3000, thence

. . . .expect RADAR vectors to cross XPRES at or below 9000, then on track 177° to cross RAMBL at or above 10000, then on (transition). Expect filed altitude 10 minutes after departure.

TAKEOFF RUNWAY 31L: Climb on heading 313° to 1000, then direct to cross NNOLN between 4000 and 7000 at or below 230K, then on track 247° to cross ARILE at or above 5000 and at or below 240K, then on track 177° to cross XPRES at or below 9000, thence

TAKEOFF RUNWAY 31R: Climb on heading 313° to 1000, then direct to cross MEERZ between 4000 and 7000 at or below 230K, then on track 247° to cross ARILE at or above 5000 and at or below 240K, then on track 177° to cross XPRES at or below 9000, thence

. . . .on track 177° to cross RAMBL at or above 10000, then on (transition). Maintain 10000. Expect filed altitude 10 minutes after departure.

- COLLEGE STATION TRANSITION (RAMBL6.CLL)
- ELLVR TRANSITION (RAMBL6.ELLVR)
- HOARY TRANSITION (RAMBL6.HOARY)
- NAVASOTA TRANSITION (RAMBL6.TNV)
- SAN ANTONIO TRANSITION (RAMBL6.SAT)
- TORNIN TRANSITION (RAMBL6.TORNIN)
- WACO TRANSITION (RAMBL6.ACT)
- WINDU TRANSITION (RAMBL6.WINDU)

- NOTE: WACO Transition: For aircraft inbound to Waco or Gray terminal area airports.
- NOTE: SAN ANTONIO Transition: For aircraft overflying Centex and San Antonio.
- NOTE: WINDU Transition: For aircraft inbound to Austin or San Antonio terminal area airports.
- NOTE: COLLEGE STATION Transition: For piston and turboprop aircraft inbound to William P Hobby, Ellington, Scholes Intl at Galveston, or Texas Gulf Coast Rgnl airports. All other aircraft types inbound to all other Houston terminal area airports except George Bush Intcntl/Houston, Conroe/North Houston Rgnl, David Wayne Hooks Meml, Liberty Muni, or Cleveland Muni airports.
- NOTE: ELLVR Transition: For turbojet aircraft inbound to William P Hobby, Ellington, Scholes Intl at Galveston, or Texas Gulf Coast Rgnl airports.
- NOTE: TORNIN Transition: For aircraft inbound to George Bush Intcntl/Houston, Conroe/North Houston Rgnl, David Wayne Hooks Meml, Liberty Muni, or Cleveland Muni airports.