

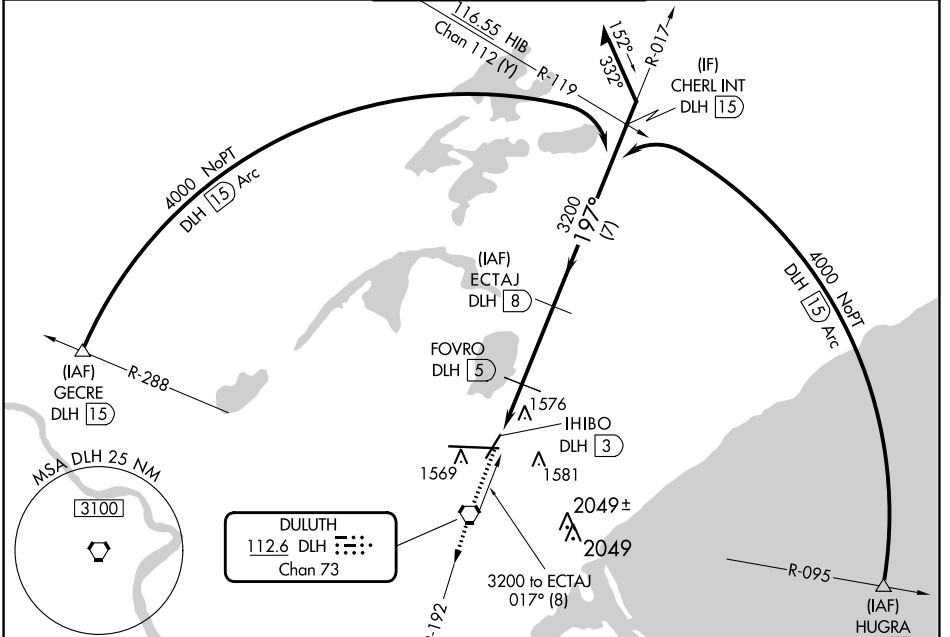
VORTAC DLH 112.6 Chan 73	APP CRS 197°	Rwy ldg 5719 TDZE 1420 Apt Elev 1428
---------------------------------------	------------------------	---

VOR/DME or TACAN RWY 21

DULUTH INTL (DLH)

⚠ Circling NA for Cat E southeast of Rwy 3-27. Visibility reduction by helicopters NA. ASR Rwy 21 Straight-in and Circling minimums NA at night.	MISSED APPROACH: Climb to 3800 direct DLH VORTAC then on DLH VORTAC R-192 to MIZOU/DLH 7 DME and hold.
--	--

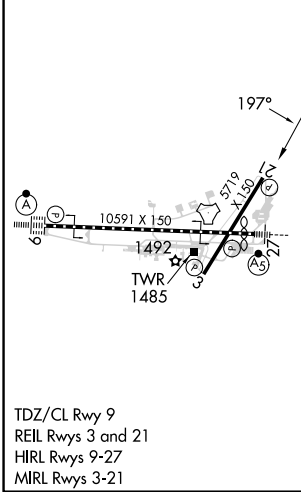
ATIS 124.1 270.1	DULUTH APP CON 125.45 233.7	DULUTH TOWER 118.3 257.8	GND CON 121.9 348.6
----------------------------	---------------------------------------	------------------------------------	-------------------------------



NC-1, 21 MAR 2024 to 18 APR 2024

NC-1, 21 MAR 2024 to 18 APR 2024

ELEV 1428	D TDZE 1420
-----------	--------------------



TDZ/CL Rwy 9
REIL Rws 3 and 21
HIRL Rws 9-27
MIRL Rws 3-21

3800	DLH	MIZOU DLH 7	ECTAJ DLH 8		
↑	DLH R-192		VGSI and descent angles not coincident (VGSI Angle 3.00/TCH 37). Remain within 15 NM		
	FOVRO DLH 5		017°	197°	3200
	IHIBO DLH 3	≤ 3.29° TCH 45			
	2100	3200			
	← 2 NM	→ 3 NM			
CATEGORY	A	B	C	D	E
S-21	1860-1	440 (500-1)	1860-1 ³ / ₈	440 (500-1 ³ / ₈)	
C CIRCLING	1880-1 452 (500-1)	1900-1 472 (500-1)	1940-1 ¹ / ₂ 512 (600-1 ¹ / ₂)	2400-3	972 (1000-3)