

DUTCHESS EIGHT DEPARTURE

AL-286 (FAA)

HUDSON VALLEY RGNL (POU)

POUGHKEEPSIE, NEW YORK

ATIS 126.75

GND CON

121.8

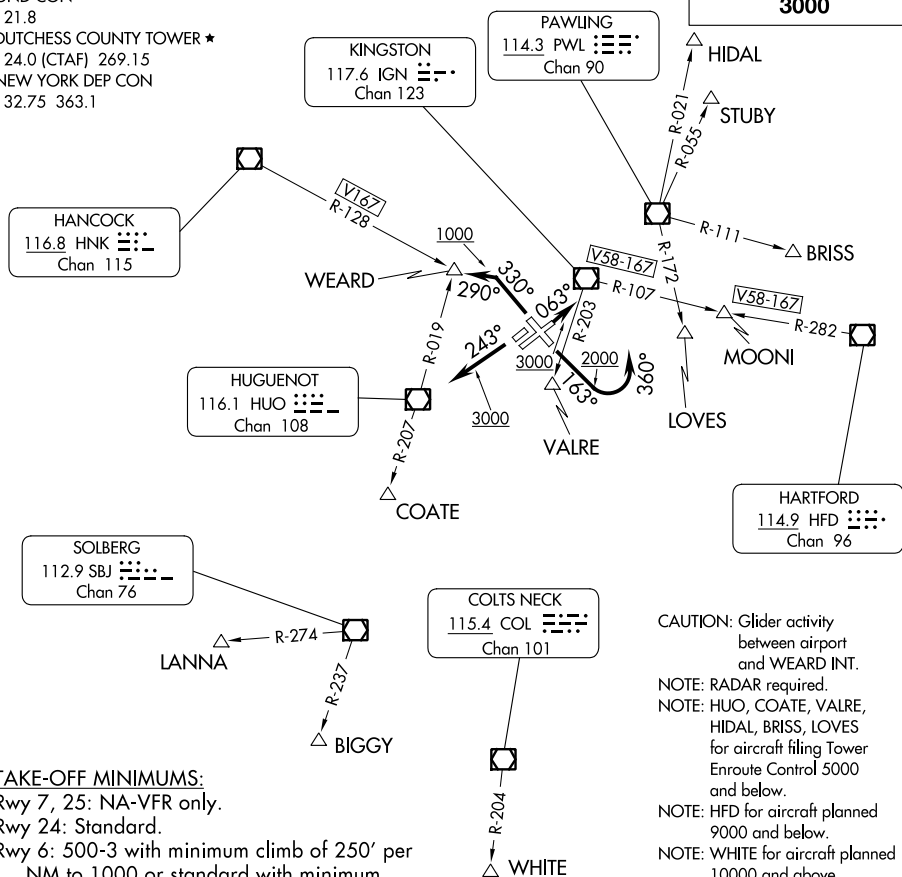
DUTCHESS COUNTY TOWER ★

124.0 (CTAF) 269.15

NEW YORK DEP CON

132.75 363.1

TOP ALTITUDE:
3000



TAKE-OFF MINIMUMS:

Rwy 7, 25: NA-VFR only.

Rwy 24: Standard.

Rwy 6: 500-3 with minimum climb of 250' per NM to 1000 or standard with minimum climb of 537' per NM to 800.

Rwy 15: Standard with minimum climb of 370' per NM to 700.

Rwy 33: Standard with minimum climb of 270' per NM to 1500.

CAUTION: Glider activity
between airport
and WEARD INT.

NOTE: RADAR required.

NOTE: HUO, COATE, VALRE,
HIDAL, BRISS, LOVES
for aircraft filing Tower
Enroute Control 5000
and below

NOTE: HFD for aircraft planned 9000 and below.

NOTE: WHITE for aircraft planned 10000 and above.

NOTE: Chart not to scale.

DEPARTURE ROUTE DESCRIPTION

TAKEOFF RUNWAY 6: Climb heading 063° to 3000, thence. . .

TAKEOFF RUNWAY 15: Climb heading 163° to 2000, then turn left heading 360°, maintain 3000, thence. . .

TAKEOFF RUNWAY 24: Climb heading 243° to 3000, thence. . .

TAKEOFF RUNWAY 33: Climb heading 330° to 1000, then turn left heading 290°, maintain 3000, thence. . .

... via radar vectors to assigned Route/Fix, expect clearance to filed altitude/flight level within ten (10) minutes after departure.

LOST COMMUNICATIONS: If radio contact is not established/lost within 2 minutes after departure, proceed on course and climb to 5000. Ten minutes after departure, climb to filed altitude/flight level.

DUTCHESS EIGHT DEPARTURE

(DUCHS8.POU) 20JUN19

POUGHKEEPSIE, NEW YORK

HUDSON VALLEY RGNL (POU)

NE-2, 21 MAR 2024 to 18 APR 2024

NE-2, 21 MAR 2024 to 18 APR 2024