

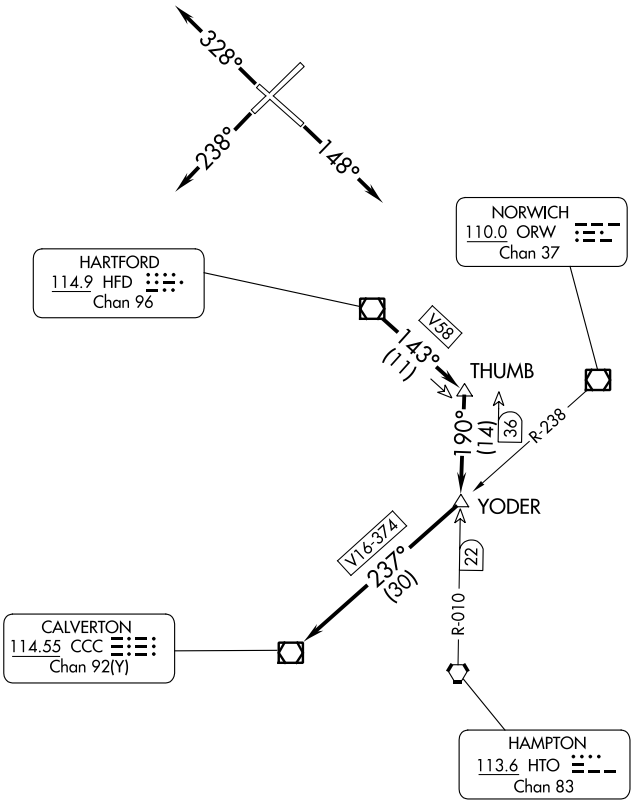
(CSTL9.CCC) 23334
COASTAL NINE DEPARTURE

AL-460 (FAA)

BRADLEY INTL (BDL)
WINDSOR LOCKS, CONNECTICUT

D-ATIS 118.15
CLNC DEL
121.75 322.3
GND CON
121.9 348.6
CPDLC
BRADLEY TOWER
120.3 351.8
BRADLEY DEP CON
123.95 290.55 (061°-240°)
125.35 281.5 (241°-060°)

TOP ALTITUDE:
4000



NOTE: RADAR required.
NOTE: Initial departure headings are predicated on avoiding noise sensitive areas. Flight crew awareness and compliance is important in minimizing noise impacts on surrounding communities.

TAKEOFF MINIMUMS:
Rwys 6, 15, 24: Standard.
Rwy 33: Standard with minimum climb of 340' per NM to 1000.

(NARRATIVE ON FOLLOWING PAGE)

NOTE: Chart not to scale.



DEPARTURE ROUTE DESCRIPTION

TAKEOFF RUNWAY 6: Climb on assigned heading for RADAR vectors to HFD VOR/DME, thence...

TAKEOFF RUNWAY 15: Climb on heading 148° or as assigned for RADAR vectors to HFD VOR/DME, thence...

TAKEOFF RUNWAY 24: Climb on heading 238° or as assigned for RADAR vectors to HFD VOR/DME, thence...

TAKEOFF RUNWAY 33: Climb on heading 328° or as assigned for RADAR vectors to HFD VOR/DME, thence...

...from over HFD VOR/DME proceed on HFD VOR/DME R-143 to THUMB INT, then on HTO VOR/DME R-010 to YODER INT, then on CCC VOR/DME R-057 to CCC VOR/DME, then on assigned route. Maintain 4000 or assigned altitude. Expect clearance to requested flight level 10 minutes after departure.

NE-1, 21 MAR 2024 to 18 APR 2024

NE-1, 21 MAR 2024 to 18 APR 2024