

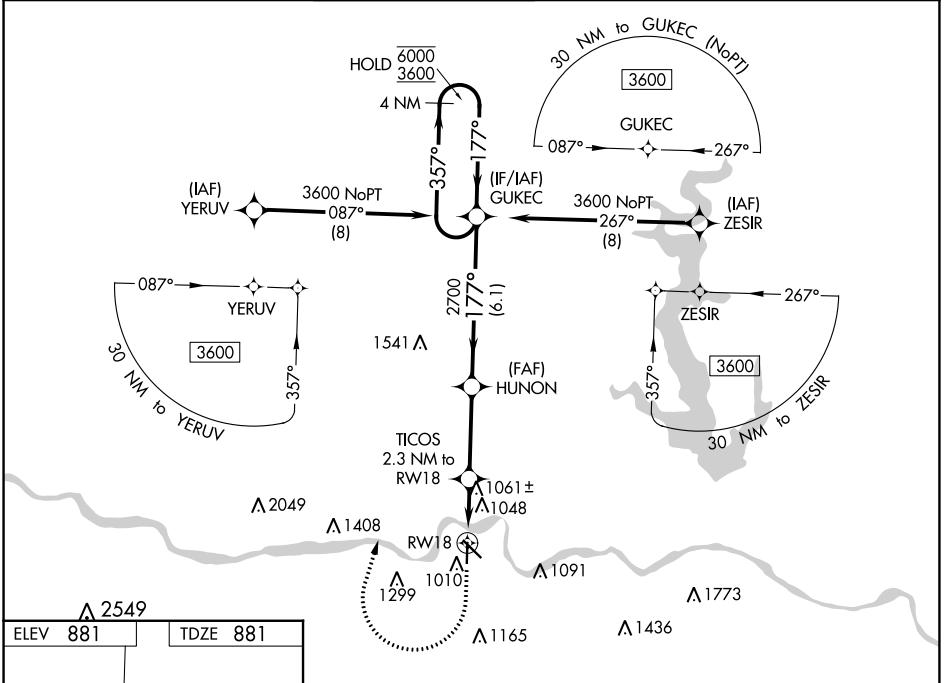
WAAS CH <b>53634</b> <b>W18A</b>	APP CRS <b>177°</b>	Rwy Idg TDZE Apt Elev	<b>4331</b> <b>881</b> <b>881</b>
--	------------------------	-----------------------------	---

# RNAV (GPS) RWY 18

PHILIP BILLARD MUNI (TOP)

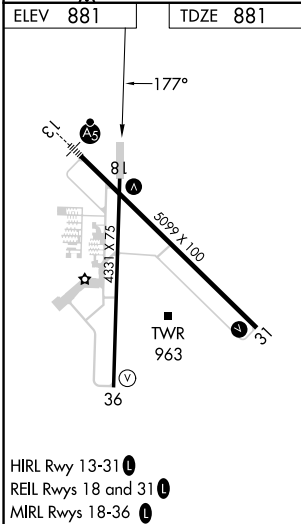
RNP APCH. ▼ Rwy 18 helicopter visibility reduction below 3/4 SM NA. For uncompensated Baro-VNAV systems, LNAV/VNAV NA below -19°C or above 54°C.	MISSED APPROACH: Climb to 1500 then climbing right turn to 3600 direct GUKEC and hold.
--	--

ASOS <b>121.275</b>	KANSAS CITY CENTER <b>123.8 343.7</b>	TOPEKA TOWER * <b>118.7 (CTAF) 0 257.8</b>	GND CON <b>121.9</b>	CLNC DEL <b>121.9</b>	UNICOM <b>122.95</b>
------------------------	--	---	-------------------------	--------------------------	-------------------------



NC-2, 21 MAR 2024 to 18 APR 2024

NC-2, 21 MAR 2024 to 18 APR 2024



ELEV 881	TDZE 881				
1500	3600	GUKEC	GUKEC	4 NM Holding Pattern	
*LNAV only	TICOS 2.3 NM to RW18	*1.3 NM to RW18	HUNON 2700	177°	357° → 6000 ← 177° 3600
RW18		1640*	2700	GP 3.00° TCH 35	
1.3 NM		1 NM	3.3 NM	6.1 NM	
CATEGORY	A	B	C	D	
LPV DA	1174-1 293 (300-1)			NA	
LNAV/VNAV DA	1340-1 1/8 459 (500-1 1/8)			NA	
LNAV MDA	1320-1	439 (500-1)	1320-1 1/4	439 (500-1 1/8) NA	
CIRCLING	1360-1	1440-1	1600-2	479 (500-1) 559 (600-1) 719 (800-2) NA	