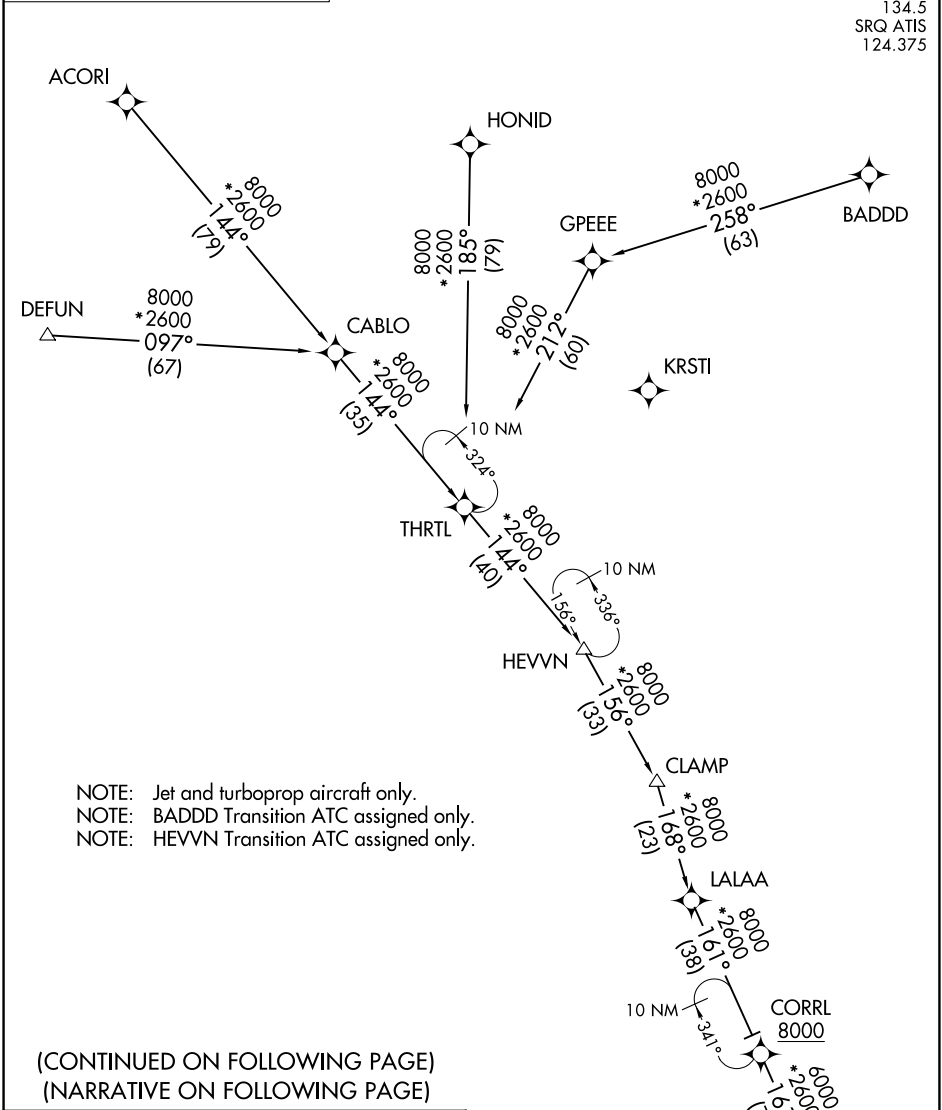


RNAV 1 - DME/DME/IRU or GPS.

RADAR required.



ACORI TRANSITION (ACORI.BANGZ1)

BADDD TRANSITION (BADDD.BANGZ1)

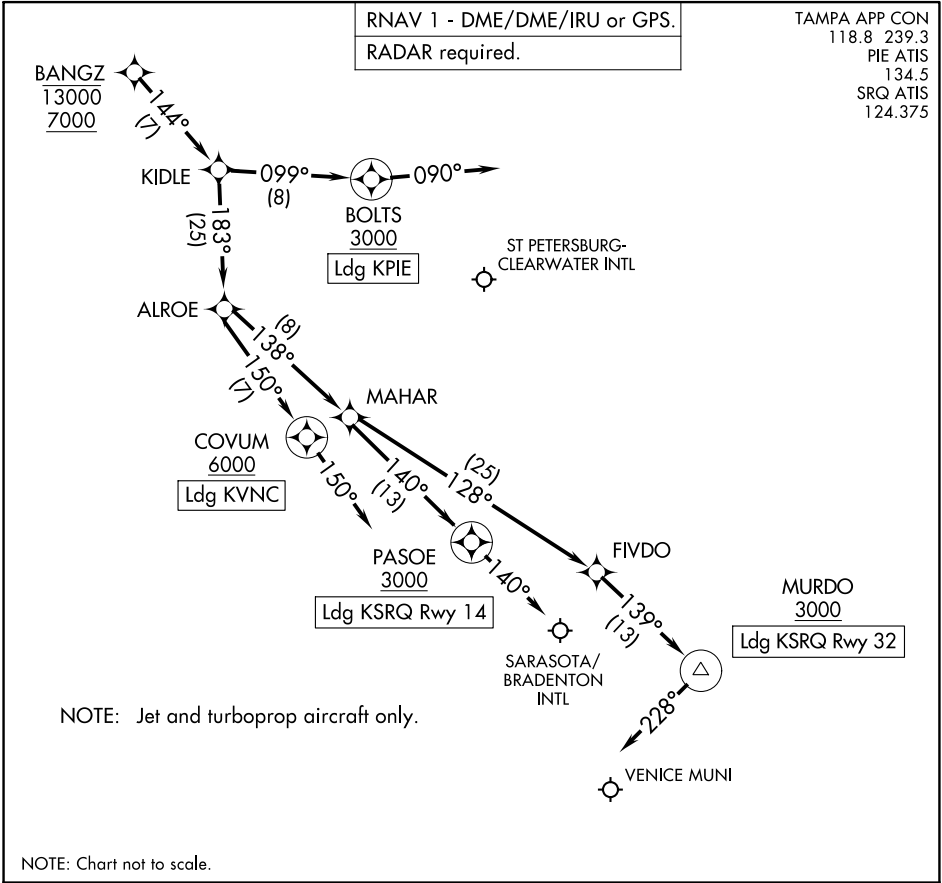
DEFUN TRANSITION (DEFUN.BANGZ1)

HEVVN TRANSITION (HEVVN.BANGZ1)

HONID TRANSITION (HONID.BANGZ1)

NOTE: Chart not to scale.

See following page  
for arrival routes.



ARRIVAL ROUTE DESCRIPTION

**LANDING KSRQ RUNWAY 14:** From BANGZ on track 144° to KIDLE, then on track 183° to ALROE, then on track 138° to MAHAR, then on track 140° to cross PASOE at or above 3000, then on heading 140° or as assigned by ATC. Expect RADAR vectors to final approach course.

**LANDING KSRQ RUNWAY 32:** From BANGZ on track 144° to KIDLE, then on track 183° to ALROE, then on track 138° to MAHAR, then on track 128° to FIVDO, then on track 139° to cross MURDO at or above 3000, then on heading 228° or as assigned by ATC. Expect RADAR vectors to final approach course.

**LANDING KPIE:** From BANGZ on track 144° to KIDLE, then on track 099° to cross BOLTS at or above 3000, then on heading 090° or as assigned by ATC. Expect RADAR vectors to final approach course.

**LANDING KVNC:** From BANGZ on track 144° to KIDLE, then on track 183° to ALROE, then on track 150° to cross COVUM at or above 6000, then on track 150°. Expect RADAR vectors to final approach course.