

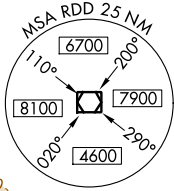
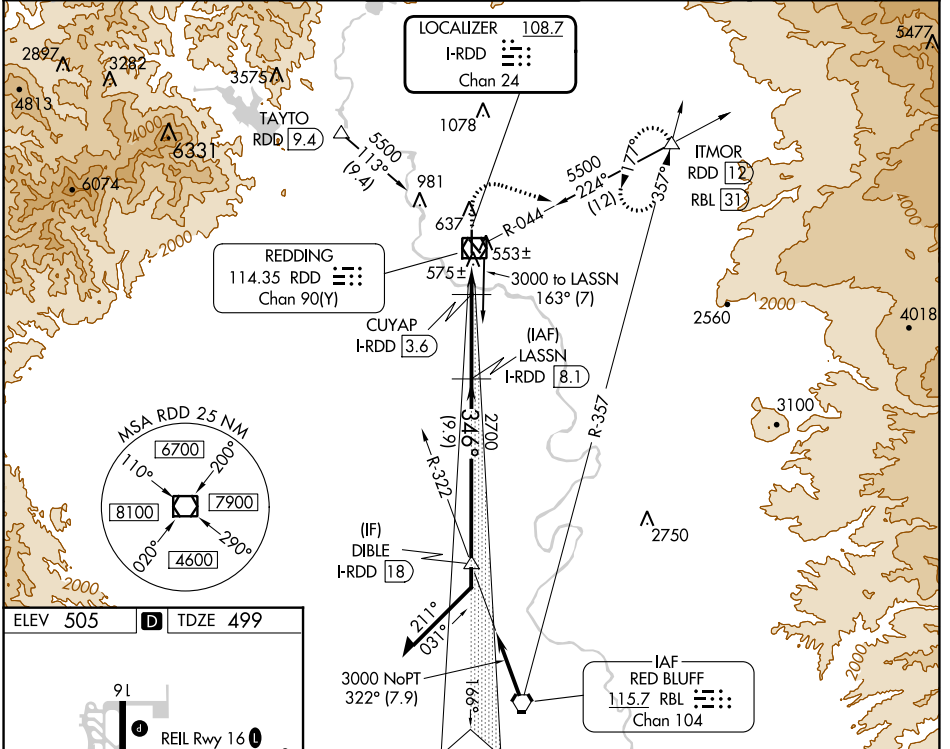
LOC/DME I-RDD <b>108.7</b> Chan 24	APP CRS <b>346°</b>	Rwy Idg TDZE Apt Elev	<b>7003</b> <b>499</b> <b>505</b>
--	------------------------	-----------------------------	---

# ILS or LOC RWY 34

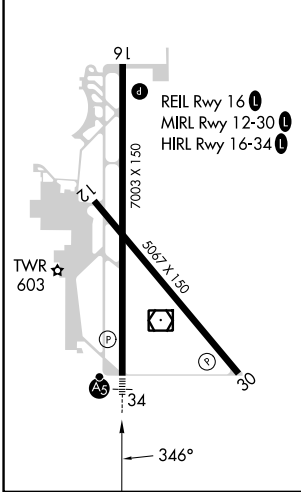
REDDING RGNL (RDD)

DME required for LOC only.		MALS R 	MISSED APPROACH: Climb to 1700 then climbing right turn to 5000 on heading 090° and RDD R-044 to ITMOR INT/RDD 12 DME and hold, continue climb-in-hold to 5000.
For inop ALS, increase S-ILS 34 Cat E visibility to 3/4 SM and S-LOC 34 Cat C/D/E visibility to 1 SM.			

ATIS <b>124.1</b>	OAKLAND CENTER <b>132.2 350.3</b>	REDDING TOWER * <b>119.8(CTAF) 269.25</b>	GND CON <b>121.7</b>	UNICOM <b>122.95</b>
----------------------	--------------------------------------	--	-------------------------	-------------------------



ELEV 505	D	TDZE 499
----------	---	----------



1700	5000	RDD R-044	ITMOR	LASSN I-RDD 8.1	VGSI and ILS glidepath not coincident (VGSI Angle 3.00/TCH 55).
Use I-RDD DME when on the localizer course. * LOC only.		CUYAP I-RDD 3.6	I-RDD 1.3	DIBLE I-RDD 18	Remain within 15 NM
1260*		2700	3000	3000	GS 3.00° TCH 52
-2.3 NM		4.5 NM	9.9 NM		
CATEGORY	A	B	C	D	E
S-ILS 34	699-1/2 200 (200-1/2)				
S-LOC 34	840-1/2	341 (400-1/2)	840-5/8 341 (400-3/8)		
CIRCLING	940-1	1000-1	1120-1 3/4	1340-2 3/4	1340-3
	435 (500-1)	495 (500-1)	615 (700-1 1/4)	835 (900-2 3/4)	835 (900-3)

SW-2, 21 MAR 2024 to 18 APR 2024

SW-2, 21 MAR 2024 to 18 APR 2024