

**TOP ALTITUDE:**  
**3000**

ATIS	
125.85	
GND CON	
121.7	
AURORA TOWER ★	
120.6	
CHICAGO DEP CON	
133.5	349.0

TAKEOFF MINIMUMS:

Rwys 9, 15, 18, 27, 33, 36: Standard.

NOTE: RADAR required.

NOTE: DME/DME/IRU or GPS required.

NOTE: RNAV 1.

NOTE: Turbojet departures maintain 250K until advised by ATC.

NOTE: AKMIE Transition: For aircraft inbound to BMI, SPI, PIA, or as assigned by ATC.

## DEPARTURE ROUTE DESCRIPTION

TAKEOFF RUNWAY 9: Climb heading 090° to 1220, then as assigned by ATC, for vectors to ACITO.

TAKEOFF RUNWAY 15: Climb heading 148° to 1220, then as assigned by ATC, for vectors to ACITO.

TAKEOFF RUNWAY 18: Climb heading 181° to 1220,  
then as assigned by ATC, for vectors to ACITO.

**TAKEOFF RUNWAY 27:** Climb heading 270° to 1220, then as assigned by ATC, for vectors to ACITO.

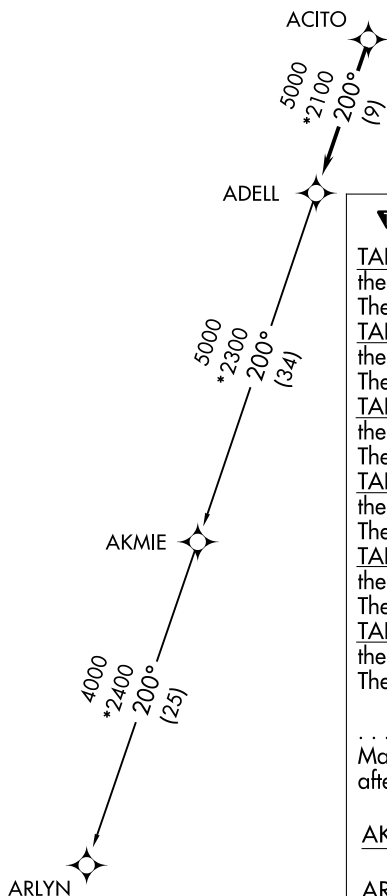
**TAKEOFF RUNWAY 33:** Climb heading 328° to 1220,  
then as assigned by ATC, for vectors to ACITO.

TAKEOFF RUNWAY 36: Climb heading 001° to 1220,  
then as assigned by ATC. for vectors to ACITO.

Thence . . . .  
 . . . . on track 200° to ADELL, then on (transition).  
 Maintain 3000. Expect filed altitude 10 minutes  
 after departure.

AKMIE TRANSITION (ADELL6.AKMIE):

ARLYN TRANSITION (ADELL6.ARLYN):



NOTE: Chart not to scale.

## ADELL SIX DEPARTURE (RNAV)

(ADELL6.ADELL) 10OCT19

CHICAGO/AURORA, ILLINOIS  
AURORA MUNI (ARR)