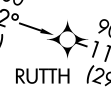


GLAVN
Landing West: Expect 14000
Landing East: Expect 12000 and 250K

See following page
for Arrival Routes.



D-ATIS ARR
119.65
ATLANTA APP CON
128.0 379.9

- NOTE: RADAR required.
NOTE: RNAV 1.
NOTE: DME/DME/IRU or GPS required.
NOTE: Turbojet aircraft only.
NOTE: Landing East: Select Rwy 9R, select DFINS approach transition;
Landing West: Select Rwy 26R.
NOTE: Landing Rwy 8L: Select JAAJJ approach transition.
NOTE: Landing Rwy 8R: Select PEARL approach transition.
NOTE: Landing Rwy 9L: Select AAKAY approach transition.

(CONTINUED ON FOLLOWING PAGES)

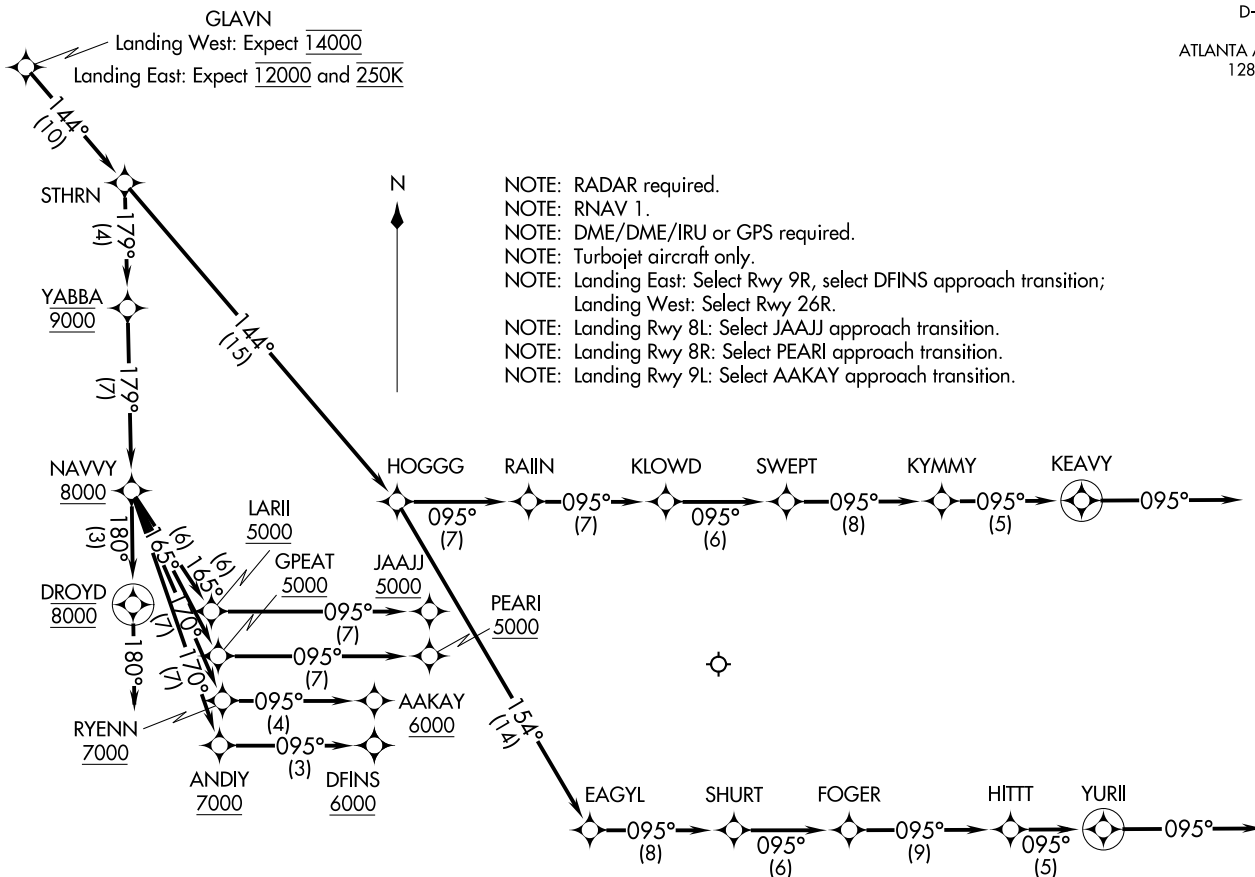
JKSON TRANSITION (JKSON.GLAVN1)
MGRIF TRANSITION (MGRIF.GLAVN1)
RUSSA TRANSITION (RUSSA.GLAVN1)

NOTE: Chart not to scale.

D-ATIS ARR
119.65
ATLANTA APP CON
128.0 379.9

(GLAVN, GLAVN1) 17285 AL-26 (FAA) HARTSFIELD-JACKSON ATLANTA INTL (ATL)
ATLANTA, GEORGIA
GLAVN ONE ARRIVAL (RNAV) Arrival Routes

GLAVN ONE ARRIVAL (RNAV) Arrival Routes
(GLAVN, GLAVN1) 120CT17 HARTSFIELD-JACKSON ATLANTA INTL (ATL)
ATLANTA, GEORGIA



NOTE: Chart not to scale.

(NARRATIVE CONTINUED ON FOLLOWING PAGE)

ARRIVAL ROUTE DESCRIPTION

From GLAVN on track 144° to STHRN.

LANDING RWYS 26L/R: From STHRN on track 144° to HOGGG, then on track 095° to RAIIN, then on track 095° to KLOWD, then on track 095° to SWEPT, then on track 095° to KYMMY, then on track 095° to KEAVY, then on track 095°. Expect RADAR vectors to final approach course.

LANDING RWYS 27L/R, 28: From STHRN on track 144° to HOGGG, then on track 154° to EAGYL, then on track 095° to SHURT, then on track 095° to FOGER, then on track 095° to HITT, then on track 095° to YURII, then on track 095°. Expect RADAR vectors to final approach course.

LANDING RWY 8L: From STHRN on track 179° to cross YABBA at 9000, then on track 179° to cross NAVVY at or above 8000, then on track 165° to cross LARII at or above 5000, then on track 095° to cross JAAJ at or above 5000. Expect ILS Rwy 8L approach.

LANDING RWY 8R: From STHRN on track 179° to cross YABBA at 9000, then on track 179° to cross NAVVY at or above 8000, then on track 165° to cross GPEAT at or above 5000, then on track 095° to cross PEARL at or above 5000. Expect ILS Rwy 8R approach.

LANDING RWY 9L: From STHRN on track 179° to cross YABBA at 9000, then on track 179° to cross NAVVY at or above 8000, then on track 170° to cross RYENN at or above 7000, then on track 095° to cross AAKAY at or above 6000. Expect ILS Rwy 9L approach.

LANDING RWY 9R: From STHRN on track 179° to cross YABBA at 9000, then on track 179° to cross NAVVY at or above 8000, then on track 170° to cross ANDIY at or above 7000, then on track 095° to cross DFINS at or above 6000. Expect ILS Rwy 9R approach.

LANDING RWY 10: From STHRN on track 179° to cross YABBA at 9000, then on track 179° to cross NAVVY at or above 8000, then on track 180° to cross DROYD at 8000, then on track 180°. Expect RADAR vectors to final approach course.

LOST COMMUNICATIONS

LANDING WEST: ASSIGNED RWY 26R OR RWY NOT ASSIGNED: Cross GLAVN at 14000; cross RAIIN at 12000; cross SWEPT at or above 7000; cross KEAVY at 5000; after KEAVY turn right direct ZELow and proceed on the ILS or RNAV Rwy 26R approach.

LANDING WEST: ASSIGNED RWY 26L: Cross GLAVN at 14000; cross RAIIN at 12000; cross SWEPT at or above 7000; cross KEAVY at 5000; after KEAVY turn right direct JIRRI and proceed on the ILS or RNAV Rwy 26L approach.

LANDING WEST: ASSIGNED RWY 27L: Cross GLAVN at 14000; cross EAGYL at 12000; cross FOGER at or above 7000; cross YURII at 4000; after YURII turn left direct SLVAA and proceed on the ILS or RNAV Rwy 27L approach.

LANDING WEST: ASSIGNED RWY 27R: Cross GLAVN at 14000; cross EAGYL at 12000; cross FOGER at or above 7000; cross YURII at 4000; after YURII turn left direct YOYU and proceed on the ILS or RNAV Rwy 27R approach.

LANDING WEST: ASSIGNED RWY 28: Cross GLAVN at 14000; cross EAGYL at 12000; cross FOGER at or above 7000; cross YURII at 4000; after YURII turn left direct PRMAN and proceed on the ILS or RNAV Rwy 28 approach.

LANDING EAST: ASSIGNED RWY 10: Cross GLAVN at 14000; cross YABBA at 9000; cross NAVVY at or above 8000; cross DROYD at 8000; after DROYD descend to 6000 and proceed direct DEWHY; proceed on the ILS or RNAV Rwy 10 approach.

SE-4, 18 APR 2024 to 16 MAY 2024

SE-4, 18 APR 2024 to 16 MAY 2024