

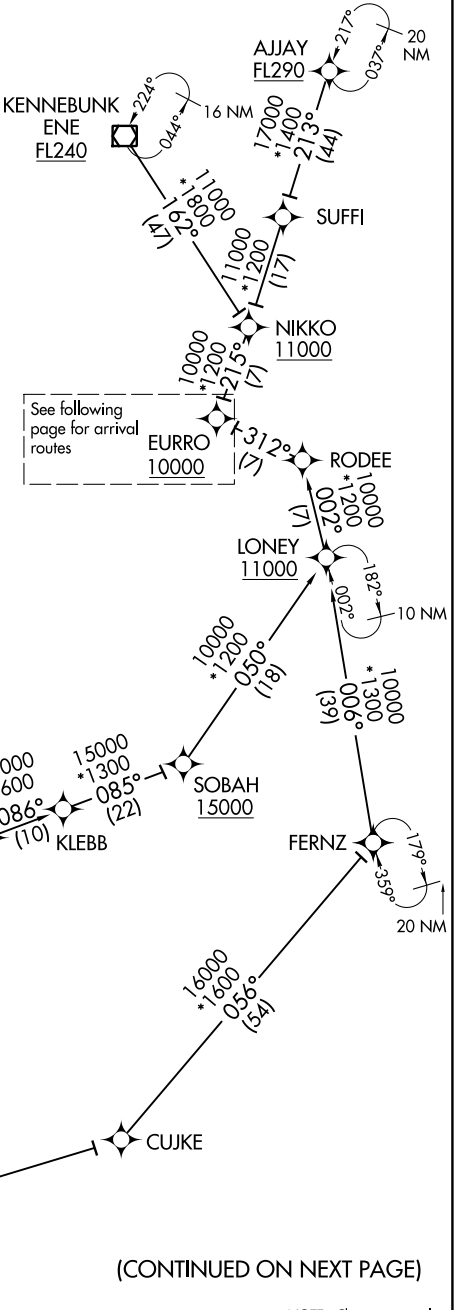
OOSH5 FIVE ARRIVAL (RNAV) Transition Routes

BOSTON, MASSACHUSETTS

D-ATIS
135.0
BOSTON APP CON
120.6 263.1

- NOTE: RADAR required.
- NOTE: RNAV 1.
- NOTE: DME/DME/IRU or GPS required.
- NOTE: Turbojet aircraft only.
- NOTE: FEXXX, MERIT, PROVI, RIFLE transitions assigned by ATC only.

- AJJAY TRANSITION (AJJAY.OOSH5)
- FERNZ TRANSITION (FERNZ.OOSH5)
- FEXXX TRANSITION (FEXXX.OOSH5)
- KENNEBUNK TRANSITION (ENE.OOSH5)
- MERIT TRANSITION (MERIT.OOSH5)
- PROVI TRANSITION (PROVI.OOSH5)
- RIFLE TRANSITION (RIFLE.OOSH5)

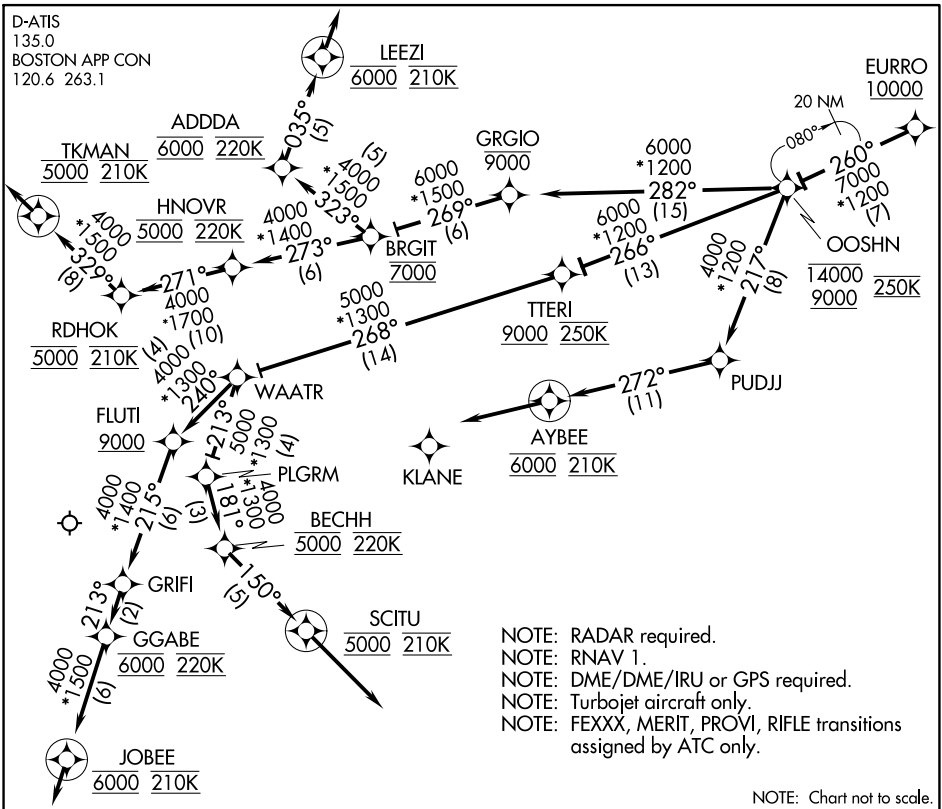


(CONTINUED ON NEXT PAGE)

NOTE: Chart not to scale.

OOSH5 FIVE ARRIVAL (RNAV) Transition Routes

BOSTON, MASSACHUSETTS



ARRIVAL ROUTE DESCRIPTION

From EURO on track 260° to cross OOSH5 between 9000 and 14000 and at 250K.

Landing Rwy 4L/R: From OOSH5 on track 266° to cross TTERI at or above 9000 and at 250K, then on track 268° to WAATR, then on track 240° to cross FLUTI at or above 9000, then on track 215° to GRIFI, then on track 213° to cross GGABE at 6000 and at 220K, then on track 213° to cross JOBEE at 6000 and at 210K, then on track 213°. Expect RADAR vectors to final approach course.

Landing Rwy 15R: From OOSH5 on track 282° cross GRGIO at or below 9000, then on track 269° to cross BRGIT at 7000, then on track 273° to cross HNOVR at 5000 and at 220K, then on track 271° to cross RDHOK at 5000 and at 210K, then on track 329° to cross TKMAN at 5000 and at 210K, then on track 329°. Expect RADAR vectors to final approach course.

Landing Rwy 22L/R: From OOSH5 on track 282° to cross GRGIO at or below 9000, then on track 269° to cross BRGIT at 7000, then on track 323° to cross ADDDA at 6000 and at 220K, then on track 035° to cross LEEZI at 6000 and at 210K, then on track 035°. Expect RADAR vectors to final approach course.

Landing Rwy 27: From OOSH5 on track 217° to PUDJJ, then on track 272° to cross AYWEE at 6000 and at 210K, then on track 272°. Expect RADAR vectors to final approach course.

Landing Rwy 32, 33L: From OOSH5 on track 266° to cross TTERI at or above 9000 at 250K, then on track 268° to WAATR, then on track 213° to PLGRM, then on track 181° to cross BECHH at 5000 and at 220K, then on track 150° to cross SCITU at 5000 and at 210K, then on track 150°. Expect RADAR vectors to final approach course.

OOSH5 FIVE ARRIVAL (RNAV) Arrival Routes

BOSTON, MASSACHUSETTS

(EURO.OOSH5) 12OCT17

GENERAL EDWARD LAWRENCE LOGAN INTL (BOS)