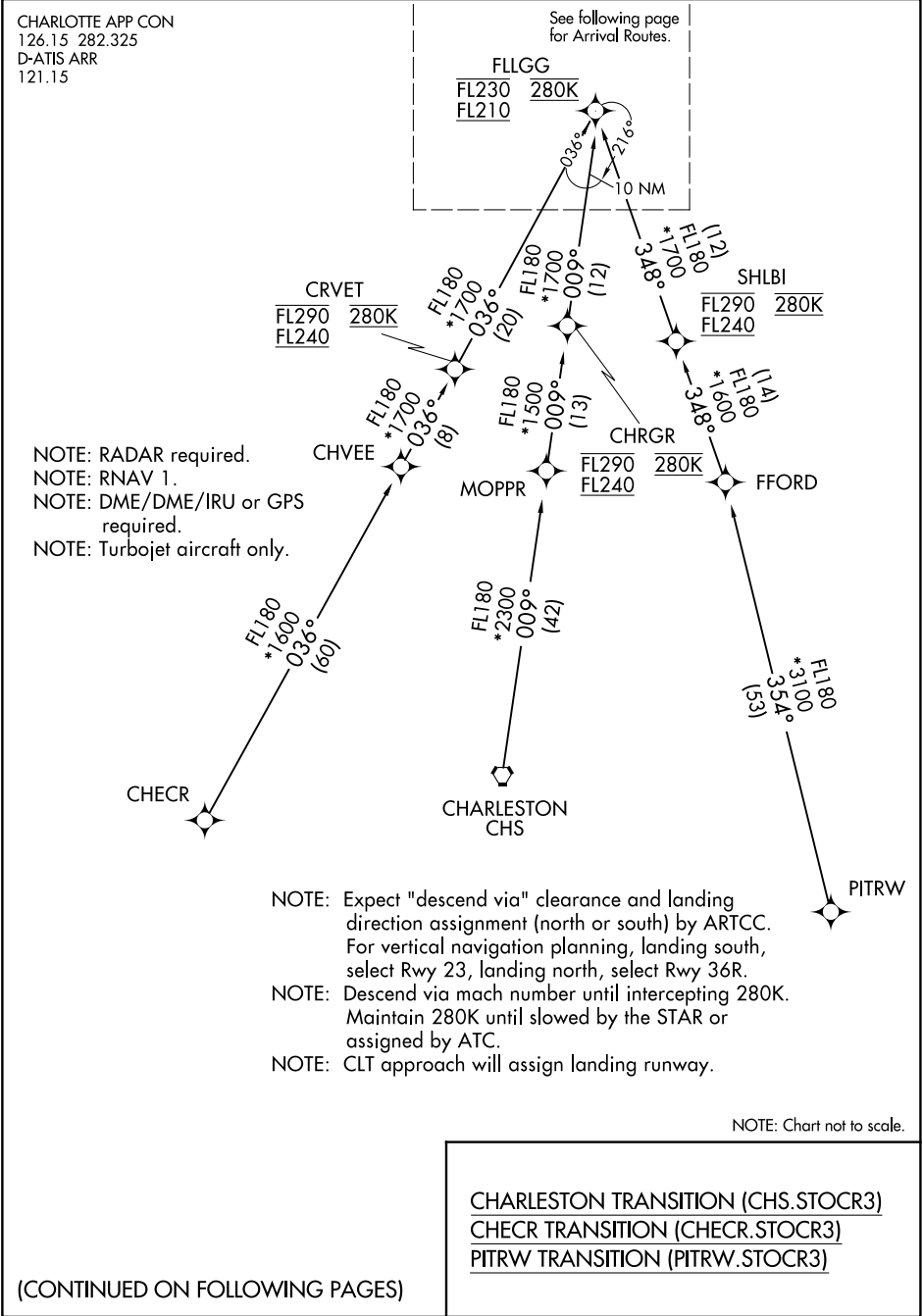


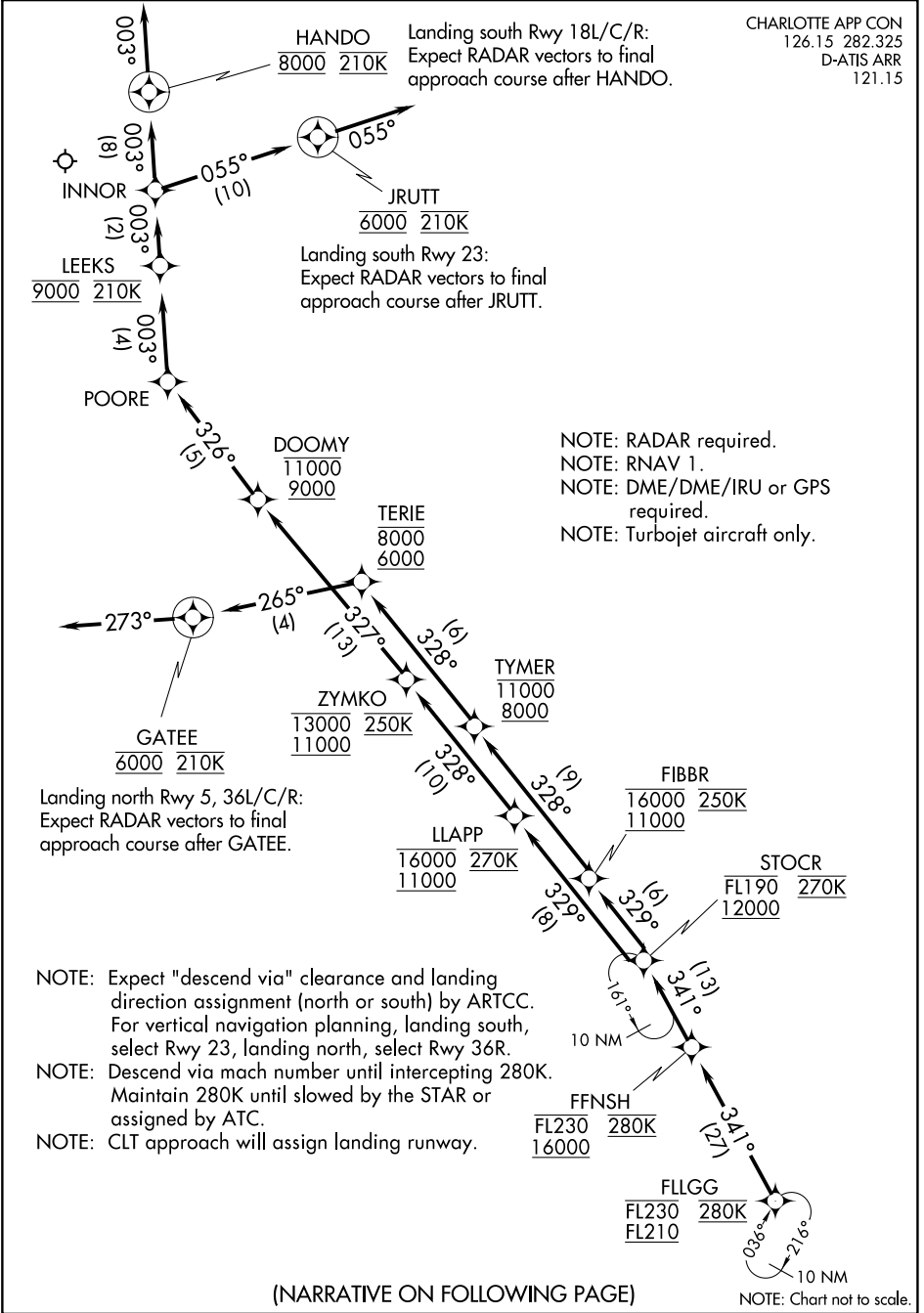
STOCR THREE ARRIVAL (RNAV) Transition Routes



SE-2, 18 APR 2024 to 16 MAY 2024

SE-2, 18 APR 2024 to 16 MAY 2024

STOCR THREE ARRIVAL (RNAV) Arrival Routes



STOCR THREE ARRIVAL (RNAV) Arrival Routes

ARRIVAL ROUTE DESCRIPTION

From FLLGG on track 341° to cross FFNSH between 16000 and 23000 and at 280K, then on track 341° to cross STOCR between 12000 and FL190 and at 270K.

LANDING NORTH: RWY 5, 36L/C/R: From STOCR on track 329° to cross FIBBR between 11000 and 16000 and at 250K, then on track 328° to cross TYMER between 8000 and 11000, then on track 328° to cross TERIE between 6000 and 8000, then on track 265° to cross GATEE at 6000 and at 210K, then on track 273°. Expect RADAR vectors to final approach course.

LANDING SOUTH: RWY 18L/C/R: From STOCR on track 329° to cross LLAPP between 11000 and 16000 and at 270K, then on track 328° to cross ZYMKO between 11000 and 13000 and at 250K, then on track 327° to cross DOOMY between 9000 and 11000, then on track 326° to POORE, then on track 003° to cross LEEKS at 9000 and at 210K, then on track 003° to INNOR, then on track 003° to cross HANDO at 8000 and at 210K, then on track 003°. Expect RADAR vectors to final approach course.

LANDING SOUTH: RWY 23: From STOCR on track 329° to cross LLAPP between 11000 and 16000 and at 270K, then on track 328° to cross ZYMKO between 11000 and 13000 and at 250K, then on track 327° to cross DOOMY between 9000 and 11000, then on track 326° to POORE, then on track 003° to cross LEEKS at 9000 and at 210K, then on track 003° to INNOR, then on track 055° to cross JRUTT at 6000 and at 210K, then on track 055°. Expect RADAR vectors to final approach course.