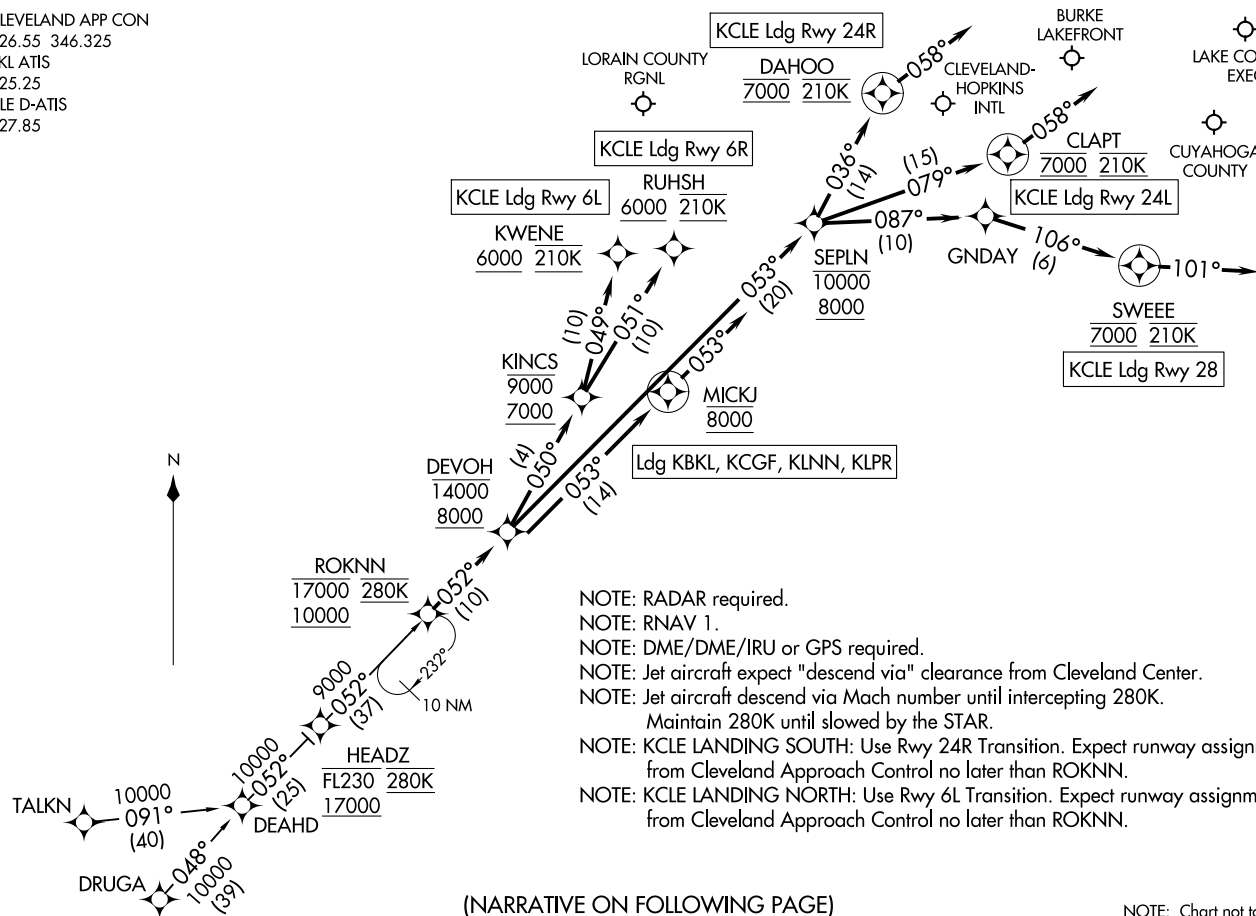


CLEVELAND APP CON
126.55 346.325
BKL ATIS
125.25
CLE D-ATIS
127.85



ARRIVAL ROUTE DESCRIPTION

DRUGA TRANSITION (DRUGA.ROKNN3)
TALKN TRANSITION (TALKN.ROKNN3)

KCLE: From ROKNN on track 052° to cross DEVOH between 8000 and 14000.

LANDING KCLE RUNWAY 06L: From DEVOH on track 050° to cross KINCS between 7000 and 9000, then on track 049° to cross KWENE at or above 6000 and at 210K. Expect ILS, RNAV (RNP) or RNAV (GPS) approach from KWENE.

LANDING KCLE RUNWAY 06R: From DEVOH on track 050° to cross KINCS between 7000 and 9000, then on track 051° to cross RUHSH at or above 6000 and at 210K. Expect ILS, RNAV (RNP) or RNAV (GPS) approach from RUHSH.

LANDING KCLE RUNWAY 24L: From DEVOH on track 053° to cross SEPLN between 8000 and 10000, then on track 079° to cross CLAPT at 7000 and at 210K, then on heading 058° or as assigned by ATC. Expect RNAV (RNP) approach from CLAPT or RADAR vectors to final approach course.

LANDING KCLE RUNWAY 24R: From DEVOH on track 053° to cross SEPLN between 8000 and 10000, then on track 036° to cross DAHOO at 7000 and at 210K, then on heading 058° or as assigned by ATC. Expect RNAV (RNP) approach from DAHOO or RADAR vectors to final approach course.

LANDING KCLE RUNWAY 28: From DEVOH on track 053° to cross SEPLN between 8000 and 10000, then on track 087° to GNDAY, then on track 106° to cross SWEEE at 7000 and at 210K, then on heading 101° or as assigned by ATC. Expect RADAR vectors to final approach course.

LANDING KBNL/KLNN/KCGF/KLPR: From ROKNN on track 052° to cross DEVOH between 8000 and 14000, then on track 053° to cross MICKJ at 8000, then on track 053°. Expect RADAR vectors to final approach course.