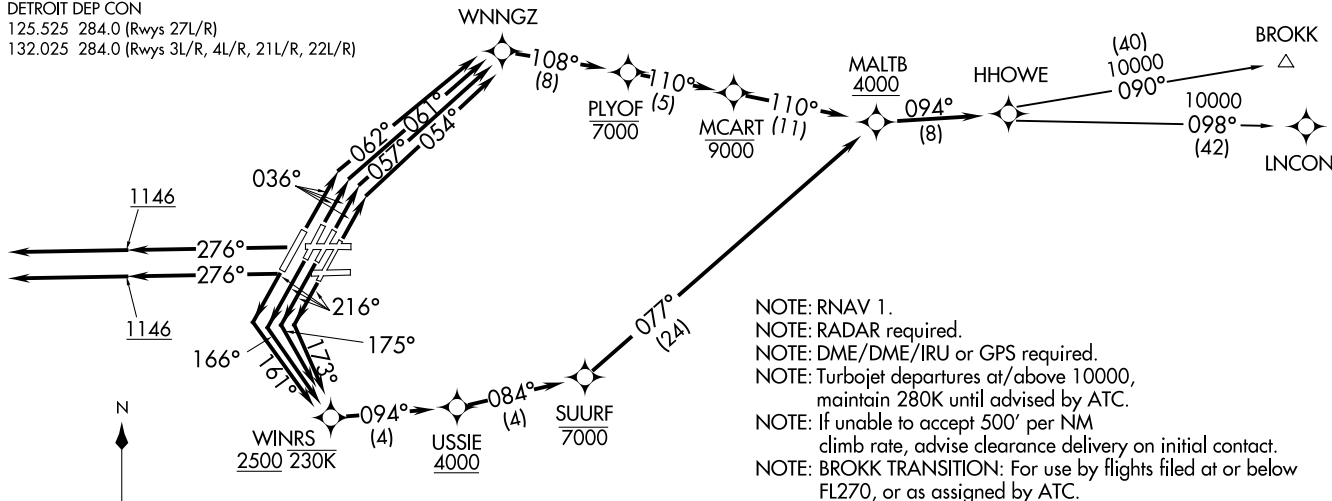


HHOWE THREE DEPARTURE (RNAV)  
(HHOWE3.HHOWE) 05DEC19  
DETROIT, MICHIGAN  
DETROIT METRO WAYNE COUNTY (DTW)

D-ATIS 118.125  
CLNC DEL 120.65  
CPDLC  
GND CON  
121.8 (NW) 119.45 (NE)  
132.725 (SW) 119.25 (SE)  
METRO TOWER  
118.4 317.725 (Rwys 3L/R, 21L/R, 27R)  
128.75 317.725 (Rwy 27L)  
135.0 317.725 (Rwy 4L/R, 22L/R)  
DETROIT DEP CON  
125.525 284.0 (Rwys 27L/R)  
132.025 284.0 (Rwys 3L/R, 4L/R, 21L/R, 22L/R)

TOP ALTITUDE:  
17000



TAKEOFF MINIMUMS:  
Rwys 3L/R, 4L/R, 21L/R, 22L/R, 27L/R: Standard with minimum climb of 500' per NM to 1146.

NOTE: Chart not to scale.

(NARRATIVE ON FOLLOWING PAGE)

(HHOWE3.HHOWE) 21112  
HHOWE THREE DEPARTURE (RNAV)  
AL-119 (FAA)  
DETROIT METRO WAYNE COUNTY (DTW)  
DETROIT, MICHIGAN

DEPARTURE ROUTE DESCRIPTION



NOTE: See additional requirements in RNAV departures AAUP.

TAKEOFF RUNWAY 3L: Climb on heading 036° to intercept course 057° to WNNGZ, then on track 108° to cross PLYOF at or below 7000, then on track 110° to cross MCART at or below 9000, then on track 110° to cross MALTB at or above 4000, thence....

TAKEOFF RUNWAY 3R: Climb on heading 036° to intercept course 054° to WNNGZ, then on track 108° to cross PLYOF at or below 7000, then on track 110° to cross MCART at or below 9000, then on track 110° to cross MALTB at or above 4000, thence....

TAKEOFF RUNWAY 4L: Climb on heading 036° to intercept course 062° to WNNGZ, then on track 108° to cross PLYOF at or below 7000, then on track 110° to cross MCART at or below 9000, then on track 110° to cross MALTB at or above 4000, thence....

TAKEOFF RUNWAY 4R: Climb on heading 036° to intercept course 061° to WNNGZ, then on track 108° to cross PLYOF at or below 7000, then on track 110° to cross MCART at or below 9000, then on track 110° to cross MALTB at or above 4000, thence....

TAKEOFF RUNWAY 21L: Climb on heading 216° to intercept course 173° to cross WINRS at or above 2500 and at or below 230K, then on track 094° to cross USSIE at or above 4000, then on track 084° to cross SUURF at or below 7000, then on track 077° to cross MALTB at or above 4000, thence....

TAKEOFF RUNWAY 21R: Climb on heading 216° to intercept course 175° to cross WINRS at or above 2500 and at or below 230K, then on track 094° to cross USSIE at or above 4000, then on track 084° to cross SUURF at or below 7000, then on track 077° to cross MALTB at or above 4000, thence....

TAKEOFF RUNWAY 22L: Climb on heading 216° to intercept course 166° to cross WINRS at or above 2500 and at or below 230K, then on track 094° to cross USSIE at or above 4000, then on track 084° to cross SUURF at or below 7000, then on track 077° to cross MALTB at or above 4000, thence....

TAKEOFF RUNWAY 22R: Climb on heading 216° to intercept course 161° to cross WINRS at or above 2500 and at or below 230K, then on track 094° to cross USSIE at or above 4000, then on track 084° to cross SUURF at or below 7000, then on track 077° to cross MALTB at or above 4000, thence....

TAKEOFF RUNWAYS 27L/27R: Climb on heading 276° to 1146, then on heading 276° or as assigned for RADAR vectors to cross MALTB at or above 4000, thence....

....on track 094° to HHOWE, then on (transition). Maintain 17000 or as assigned by ATC, expect filed altitude 10 minutes after departure.

BROKK TRANSITION (HHOWE3.BROKK)  
LNCON TRANSITION (HHOWE3.LNCON)

EC-1, 18 APR 2024 to 16 MAY 2024

EC-1, 18 APR 2024 to 16 MAY 2024