

LIIDS TWO DEPARTURE (RNAV)
(LIIDS2.LIIDS) 15AUG19

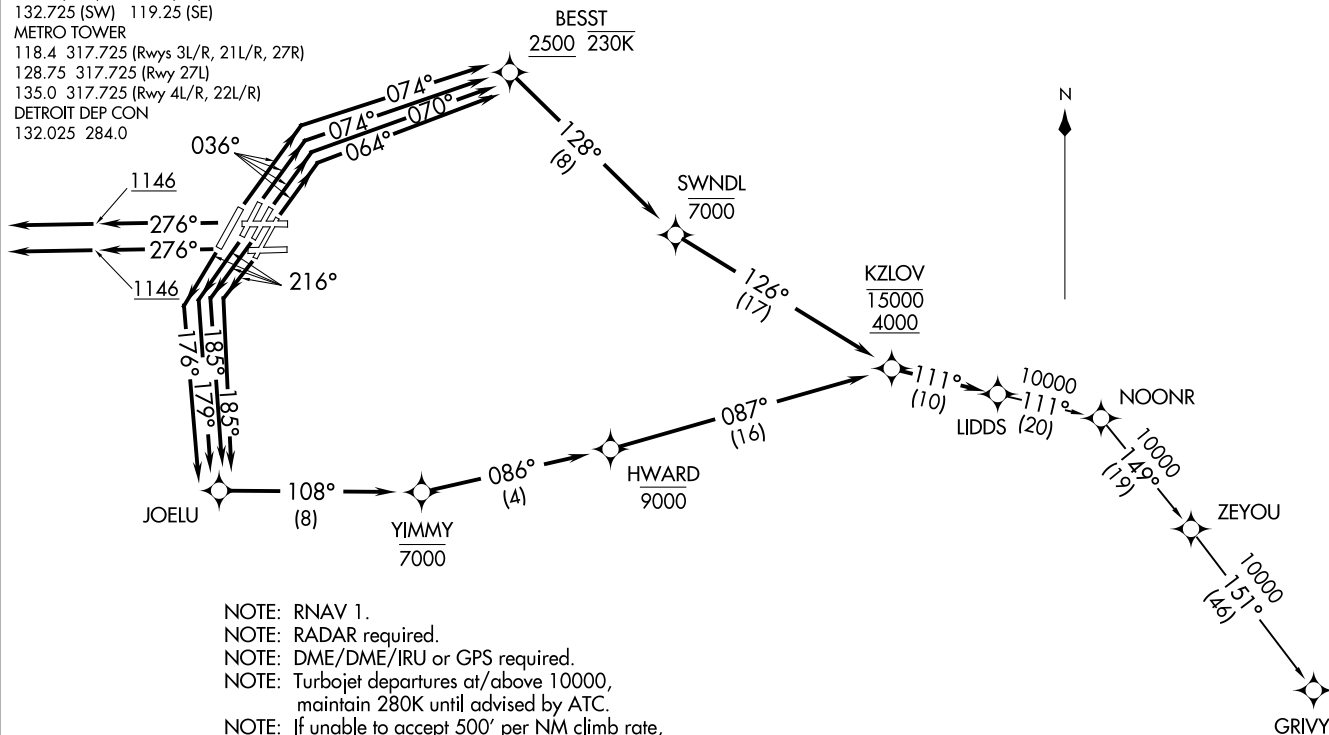
DETROIT, MICHIGAN
DETROIT METRO WAYNE COUNTY (DTW)

D-ATIS 118.125
CLNC DEL 120.65
CPDLC
GND CON
121.8 (NW) 119.45 (NE)
132.725 (SW) 119.25 (SE)
METRO TOWER
118.4 317.725 (Rwys 3L/R, 21L/R, 27R)
128.75 317.725 (Rwy 27L)
135.0 317.725 (Rwy 4L/R, 22L/R)
DETROIT DEP CON
132.025 284.0

TAKEOFF MINIMUMS:

Rwys 3L/R, 4L/R, 21L/R, 22L/R, 27L/R: Standard with minimum climb of 500' per NM to 1146.

TOP ALTITUDE:
17000



NOTE: RNAV 1.
NOTE: RADAR required.
NOTE: DME/DME/IRU or GPS required.
NOTE: Turbojet departures at/above 10000, maintain 280K until advised by ATC.
NOTE: If unable to accept 500' per NM climb rate, advise clearance delivery on initial contact.

(NARRATIVE ON FOLLOWING PAGE)

(LIIDS2.LIIDS) 21112
LIIDS TWO DEPARTURE (RNAV)

DETROIT METRO WAYNE COUNTY (DTW)
DETROIT, MICHIGAN
AL-119 (FAA)



DEPARTURE ROUTE DESCRIPTION

NOTE: See additional requirements in RNAV departure AAUP.

- TAKEOFF RUNWAY 3L: Climb on heading 036° to intercept course 070° to cross BESST at or above 2500 and at or below 230K, then on track 128° to cross SWNDL at or below 7000, then on track 126° to cross KZLOV between 4000 and 15000, thence....
- TAKEOFF RUNWAY 3R: Climb on heading 036° to intercept course 064° to cross BESST at or above 2500 and at or below 230K, then on track 128° to cross SWNDL at or below 7000, then on track 126° to cross KZLOV between 4000 and 15000, thence....
- TAKEOFF RUNWAYS 4L/R: Climb on heading 036° to intercept course 074° to cross BESST at or above 2500 and at or below 230K, then on track 128° to cross SWNDL at or below 7000, then on track 126° to cross KZLOV between 4000 and 15000, thence....
- TAKEOFF RUNWAYS 21L/R: Climb on heading 216° to intercept course 185° to JOELU, then on track 108° to cross YIMMY at or below 7000, then on track 086° to cross HWARD at or below 9000, then on track 087° to cross KZLOV between 4000 and 15000, thence....
- TAKEOFF RUNWAY 22L: Climb on heading 216° to intercept course 179° to JOELU, then on track 108° to cross YIMMY at or below 7000, then on track 086° to cross HWARD at or below 9000, then on track 087° to cross KZLOV between 4000 and 15000, thence....
- TAKEOFF RUNWAY 22R: Climb on heading 216° to intercept course 176° to JOELU, then on track 108° to cross YIMMY at or below 7000, then on track 086° to cross HWARD at or below 9000, then on track 087° to cross KZLOV between 4000 and 1500, thence....
- TAKEOFF RUNWAY 27L: Climb on heading 276° to 1146, then on heading 276° or as assigned for RADAR vectors to cross KZLOV between 4000 and 15000, thence....
- TAKEOFF RUNWAY 27R: Climb on heading 276° to 1146, then on heading 276° or as assigned for RADAR vectors to cross KZLOV between 4000 and 15000, thence....

....on track 111° to LIDDS, then on (transition). Maintain 17000 or as assigned by ATC, expect filed altitude 10 minutes after departure.

GRIVY TRANSITION (LIDDS2.GRIVY)

EC-1, 18 APR 2024 to 16 MAY 2024

EC-1, 18 APR 2024 to 16 MAY 2024