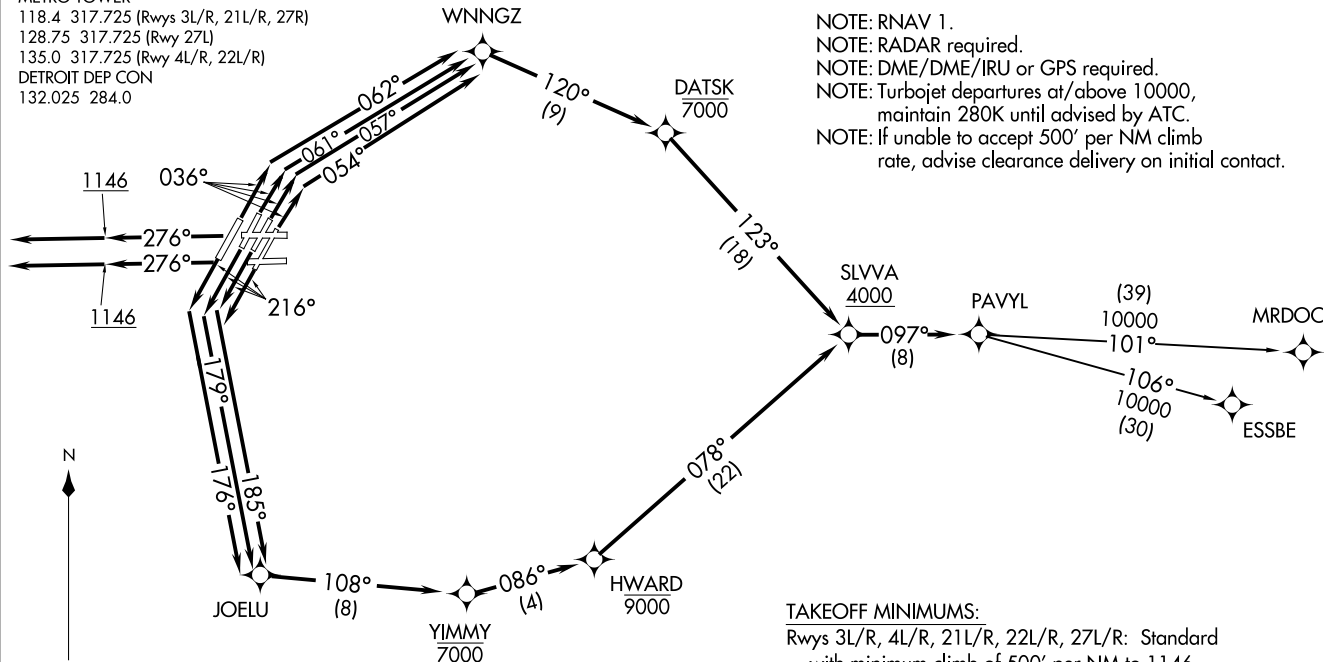


NOTE: RNAV 1.
NOTE: RADAR required.
NOTE: DME/DME/IRU or GPS required.
NOTE: Turbojet departures at/above 10000,
maintain 280K until advised by ATC.
NOTE: If unable to accept 500' per NM climb
rate, advise clearance delivery on initial contact.

TAKEOFF MINIMUMS:
Rwys 3L/R, 4L/R, 21L/R, 22L/R, 27L/R: Standard
with minimum climb of 500' per NM to 1146.

(NARRATIVE ON FOLLOWING PAGE)

D-ATIS 118.125
CLNC DEL 120.65
CPDLC
GND CON
121.8 (NW) 119.45 (NE)
132.725 (SW) 119.25 (SE)
METRO TOWER
118.4 317.725 (Rwys 3L/R, 21L/R, 27R)
128.75 317.725 (Rwy 27L)
135.0 317.725 (Rwy 4L/R, 22L/R)
DETROIT DEP CON
132.025 284.0



NOTE: Chart not to scale.

PAVYL TWO DEPARTURE (RNAV)
(PAVYL2.PAVYL) 15AUG19

DETROIT, MICHIGAN
DETROIT METRO WAYNE COUNTY (DTW)

(PAVYL2.PAVYL) 21112
PAVYL TWO DEPARTURE (RNAV)

DETROIT METRO WAYNE COUNTY (DTW)
AL-119 (FAA) DETROIT, MICHIGAN



DEPARTURE ROUTE DESCRIPTION

NOTE:See additional requirements in RNAV departure AAUP.

TAKEOFF RUNWAY 3L: Climb on heading 036° to intercept course 057° to WNNGZ, then on track 120° to cross DATSK at or below 7000, then on track 123° to cross SLVVA at or above 4000, thence....

TAKEOFF RUNWAY 3R: Climb on heading 036° to intercept course 054° to WNNGZ, then on track 120° to cross DATSK at or below 7000, then on track 123° to cross SLVVA at or above 4000, thence....

TAKEOFF RUNWAY 4L: Climb on heading 036° to intercept course 062° to WNNGZ, then on track 120° to cross DATSK at or below 7000, then on track 123° to cross SLVVA at or above 4000, thence....

TAKEOFF RUNWAY 4R: Climb on heading 036° to intercept course 061° to WNNGZ, then on track 120° to cross DATSK at or below 7000, then on track 123° to cross SLVVA at or above 4000, thence....

TAKEOFF RUNWAYS 21L/R: Climb on heading 216° to intercept course 185° to JOELU, then on track 108° to cross YIMMY at or below 7000, then on track 086° to cross HWARD at or below 9000, then on track 078° to cross SLVVA at or above 4000, thence....

TAKEOFF RUNWAY 22L: Climb on heading 216° to intercept course 179° to JOELU, then on track 108° to cross YIMMY at or below 7000, then on track 086° to cross HWARD at or below 9000, then on track 078° to cross SLVVA at or above 4000, thence....

TAKEOFF RUNWAY 22R: Climb on heading 216° to intercept course 176° to JOELU, then on track 108° to cross YIMMY at or below 7000, then on track 086° to cross HWARD at or below 9000, then on track 078° to cross SLVVA at or above 4000, thence....

TAKEOFF RUNWAYS 27L/27R: Climb on heading 276° to 1146, then on heading 276° or as assigned for RADAR vectors to cross SLVVA at or above 4000, thence....

....on track 097° to PAVYL, then on (transition). Maintain 17000 or as assigned by ATC, expect filed altitude 10 minutes after departure.

ESSBE TRANSITION (PAVYL2.ESSBE)
MRDOC TRANSITION (PAVYL2.MRDOC)

EC-1, 18 APR 2024 to 16 MAY 2024

EC-1, 18 APR 2024 to 16 MAY 2024