

SNDERS TWO DEPARTURE (RNAV) Departure Routes

DETROIT, MICHIGAN

TOP ALTITUDE:
17000

D-ATIS 118.125

CLNC DEL 120,65

CPDLC

GND CON

121.8 (NW) 119.45 (NE)

132.725 (SW) 119.25 (SE)

METRO TOWER

118.4 317.725 (Rwys 3L/R, 21L/R, 27R)

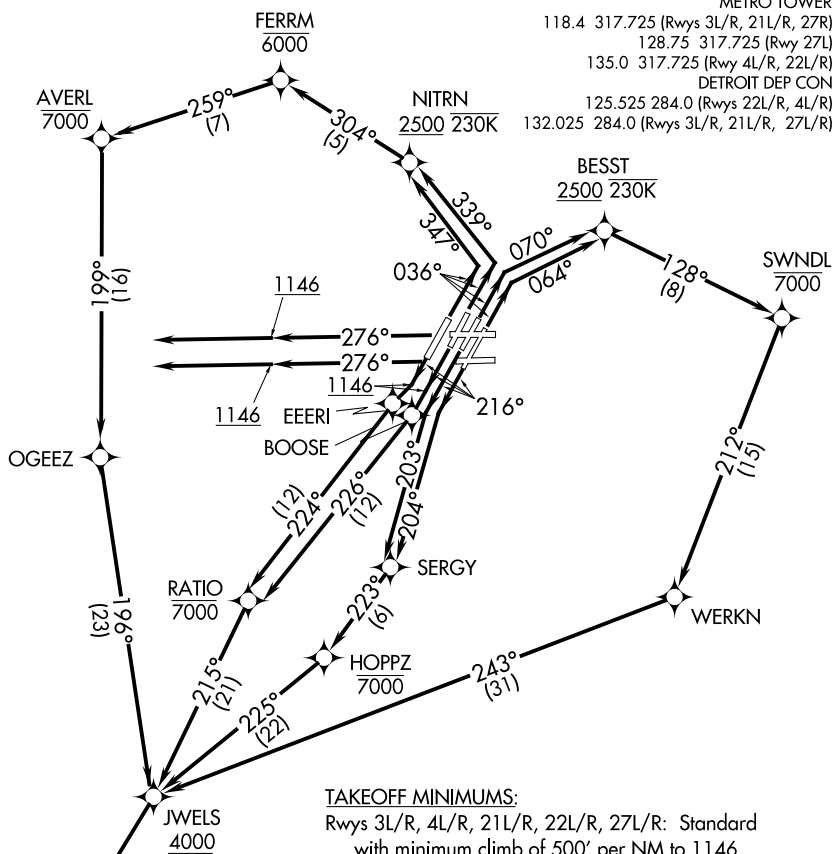
128.75 317.725 (Rwy 27L)

135.0 317.725 (Rwy 4L/R, 22L/R)

DETROIT DEP CON

125.525 284.0 (Rwys 22L/R, 4L/R)

132.025 284.0 (Rwys 3L/R, 21L/R, 27L/R)



TAKEOFF MINIMUMS:

Rwys 3L/R, 4L/R, 21L/R, 22L/R, 27L/R: Standard with minimum climb of 500' per NM to 1146.

NOTE: RNAV 1.

NOTE: RADAR required.

NOTE: DME/DME/IRU or GPS required.

NOTE: Turbojet departures at/above 10000, maintain 280K until advised by ATC.

NOTE: TORRR TRANSITION: For use by KIND and KCVG area arrivals only

and flights filed at or below FL220, or as assigned by ATC.

NOTE: If unable to accept 500' per NM climb rate, advise clearance delivery on initial contact.

(CONTINUED ON FOLLOWING PAGE)

NOTE: Chart not to scale.

SNDRS TWO DEPARTURE (RNAV) Departure Routes

DETROIT, MICHIGAN

(SNDRS2.SNDRS) 15AUG19

DETROIT METRO WAYNE COUNTY (DTW)

EC-1, 18 APR 2024 to 16 MAY 2024

EC-1, 18 APR 2024 to 16 MAY 2024

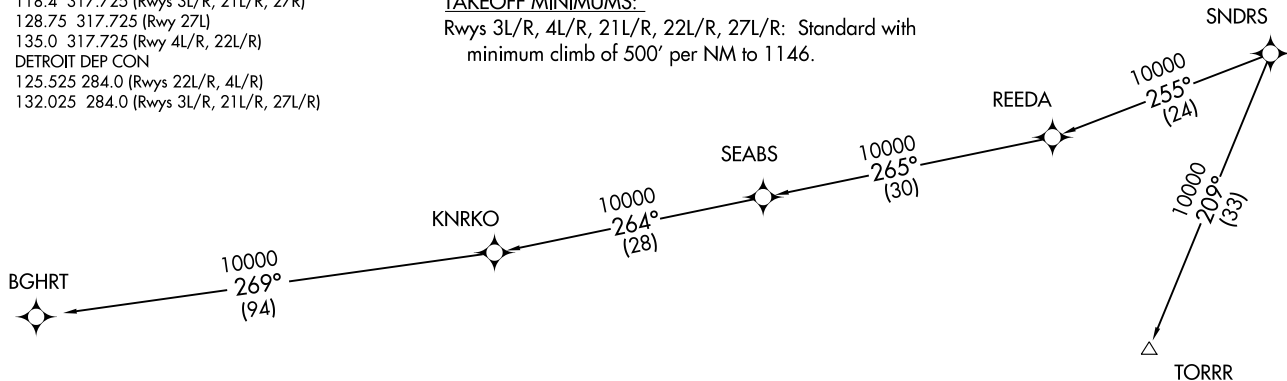
SNDRS TWO DEPARTURE (RNAV) Transition Routes
(SNDRS2.SNDRS) 15AUG19
DETROIT, MICHIGAN
DETROIT METRO WAYNE COUNTY (DTW)

D-ATIS 118.125
CLNC DEL 120.65
CPDLC
GND CON
121.8 (NW) 119.45 (NE)
132.725 (SW) 119.25 (SE)
METRO TOWER
118.4 317.725 (Rwys 3L/R, 21L/R, 27R)
128.75 317.725 (Rwy 27L)
135.0 317.725 (Rwy 4L/R, 22L/R)
DETROIT DEP CON
125.525 284.0 (Rwys 22L/R, 4L/R)
132.025 284.0 (Rwys 3L/R, 21L/R, 27L/R)

TAKEOFF MINIMUMS:

Rwys 3L/R, 4L/R, 21L/R, 22L/R, 27L/R: Standard with
minimum climb of 500' per NM to 1146.

**TOP ALTITUDE:
17000**



NOTE: RNAV 1.
NOTE: RADAR required.
NOTE: DME/DME/IRU or GPS required.
NOTE: Turbojet departures at/above 10000, maintain 280K until advised by ATC.
NOTE: TORRR TRANSITION: For use by KIND and KCVG area arrivals only and flights
filed at or below FL220, or as assigned by ATC.
NOTE: If unable to accept 500' per NM climb rate,
advise clearance delivery on initial contact.

NOTE: Chart not to scale.

(NARRATIVE ON FOLLOWING PAGE)

(SNDRS2.SNDRS) 21112 AL-119 (FAA)
SNDRS TWO DEPARTURE (RNAV) Transition Routes
DETROIT METRO WAYNE COUNTY (DTW)
DETROIT, MICHIGAN



DEPARTURE ROUTE DESCRIPTION

NOTE: See additional requirements in RNAV departure AUP.

TAKEOFF RUNWAY 3L: Climb on heading 036° to intercept course 070° to cross BESST at or above 2500 and at or below 230K, then on track 128° to cross SWNDL at or below 7000, then on track 212° to WERKN, then on track 243° to cross JWELS at or above 4000, thence...

TAKEOFF RUNWAY 3R: Climb on heading 036° to intercept course 064° to cross BESST at or above 2500 and at or below 230K, then on track 128° to cross SWNDL at or below 7000, then on track 212° to WERKN, then on track 243° to cross JWELS at or above 4000, thence...

TAKEOFF RUNWAY 4L: Climb on heading 036° to intercept course 347° to cross NITRN at or above 2500 and at or below 230K, then on track 304° to cross FERRM at or below 6000, then on track 259° to cross AVERL at or below 7000, then or track 199° to OGEEZ, then on track 196° to cross JWELS at or above 4000, thence...

TAKEOFF RUNWAY 4R: Climb on heading 036° to intercept course 339° to cross NITRN at or above 2500 and at or below 230K, then on track 304° to cross FERRM at or below 6000, then on track 259° to cross AVERL at or below 7000, then or track 199° to OGEEZ, then on track 196° to cross JWELS at or above 4000, thence....

TAKEOFF RUNWAY 21L: Climb on heading 216° to intercept course 204° to SERGY, then on track 223° to cross HOPPPZ at or below 7000, then on track 225° to cross JWELS at or above 4000, thence....

TAKEOFF RUNWAY 21R: Climb on heading 216° to intercept course 203° to SERGY, then on track 223° to cross HOPPPZ at or below 7000, then on track 225° to cross JWELS at or above 4000, thence....

TAKEOFF RUNWAY 22L: Climb on heading 216° to 1146, then direct BOOSE, then on track 226° to cross RATIO at or below 7000, then on track 215° to cross JWELS at or above 4000, thence....

TAKEOFF RUNWAY 22R: Climb on heading 216° to 1146, then direct EEERI, then on track 224° to cross RATIO at or below 7000, then on track 215° to cross JWELS at or above 4000, thence....

TAKEOFF RUNWAYS 27L/27R: Climb on heading 276° to 1146, then on heading 276° or as assigned for RADAR vectors to cross JWELS at or above 4000, thence....

....on track 218° to SNDRS, then on (transition). Maintain 17000 or as assigned by ATC, expect filed altitude 10 minutes after departure.

BGHRT TRANSITION (SNDRS2.BGHRT):

TORRR TRANSITION (SNDRS2.TORRR):

EC-1, 18 APR 2024 to 16 MAY 2024

EC-1, 18 APR 2024 to 16 MAY 2024