

ZETTR THREE DEPARTURE (RNAV) Departure Routes

DETROIT, MICHIGAN

D-ATIS 118.125
CLNC DEL 120.65
CPDLC
GND CON
121.8 (NW) 119.45 (NE)
132.725 (SW) 119.25 (SE)
METRO TOWER
118.4 317.725 (Rwys 3L/R, 21L/R, 27R)
128.75 317.725 (Rwy 27L)
135.0 317.725 (Rwy 4L/R, 22L/R)
DETROIT DEP CON
125.525 284.0 (Rwys 22L/R, 27L/R)
132.025 284.0 (Rwys 3L/R, 4L/R, Rwy 21L/R)

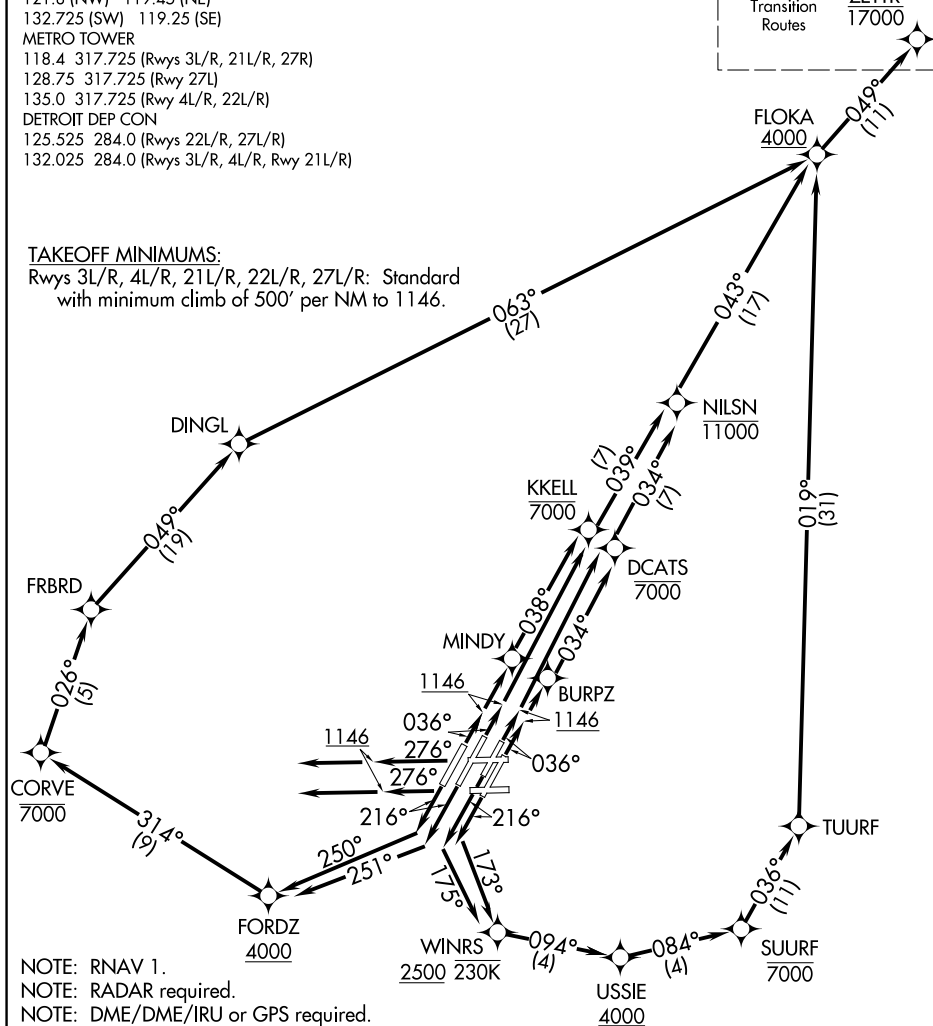
TOP ALTITUDE:
17000

See following
page for
Transition
Routes

ZETTR
17000

TAKEOFF MINIMUMS:

Rwys 3L/R, 4L/R, 21L/R, 22L/R, 27L/R: Standard
with minimum climb of 500' per NM to 1146.



- NOTE: RNAV 1.
- NOTE: RADAR required.
- NOTE: DME/DME/IRU or GPS required.
- NOTE: Turbojet departures at/above 10000, maintain 280K until advised by ATC.
- NOTE: TANKO TRANSITION: For use by CYYZ area arrivals only, or as assigned by ATC.
- NOTE: If unable to accept 500' per NM climb rate, advise clearance delivery on initial contact.

(CONTINUED ON FOLLOWING PAGE)

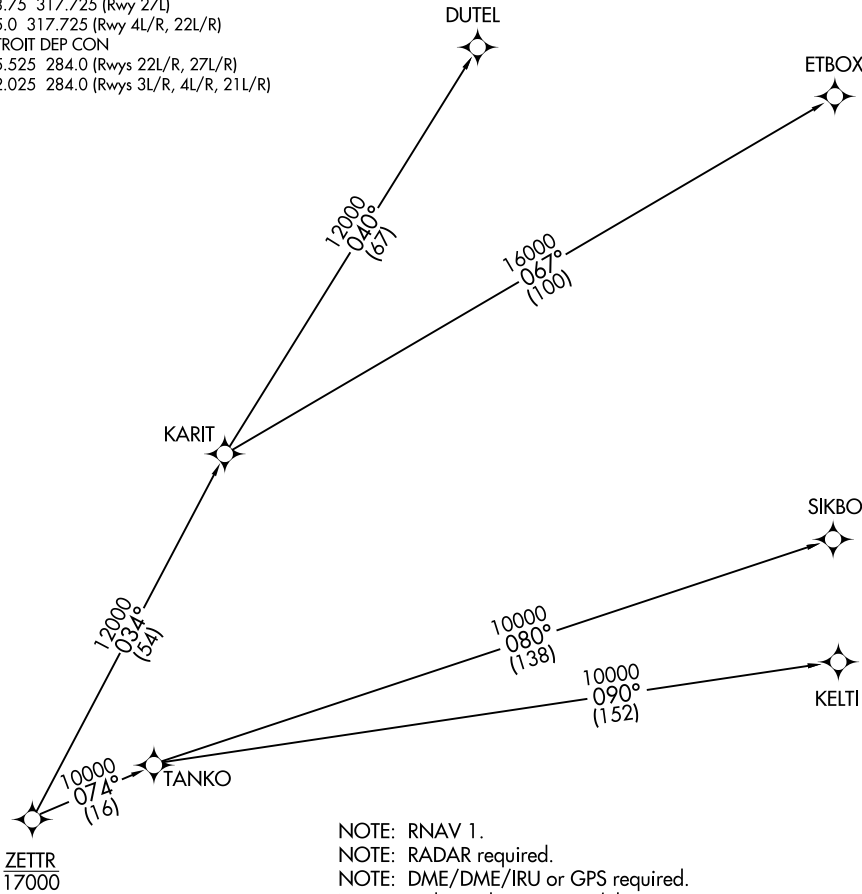
NOTE: Chart not to scale.

ZETTR THREE DEPARTURE (RNAV) Departure Routes

DETROIT, MICHIGAN

D-ATIS 118.125
CLNC DEL 120.65
CPDLC
GND CON
121.8 (NW) 119.45 (NE)
132.725 (SW) 119.25 (SE)
METRO TOWER
118.4 317.725 (Rwys 3L/R, 21L/R, 27R)
128.75 317.725 (Rwy 27L)
135.0 317.725 (Rwy 4L/R, 22L/R)
DETROIT DEP CON
125.525 284.0 (Rwys 22L/R, 27L/R)
132.025 284.0 (Rwys 3L/R, 4L/R, 21L/R)

TOP ALTITUDE:
17000



(NARRATIVE CONTINUED ON FOLLOWING PAGE) NOTE: Chart not to scale.

ZETTR THREE DEPARTURE (RNAV)



DEPARTURE ROUTE DESCRIPTION

NOTE: See additional requirements in RNAV departure AAUP.

TAKEOFF RUNWAY 3L: Climb on heading 036° to 1146, then direct to cross DCATS at or below 7000, then on track 034° to cross NILSN at or below 11000, then on track 043° to cross FLOKA at or above 4000, thence....

TAKEOFF RUNWAY 3R: Climb on heading 036° to 1146, then direct BURPZ, then on track 034° to cross DCATS at or below 7000, then on track 034° to cross NILSN at or below 11000, then on track 043° to cross FLOKA at or above 4000, thence....

TAKEOFF RUNWAY 4L: Climb on heading 036° to 1146, then direct MINDY, then on track 038° to cross KKELL at or below 7000, then on track 039° to cross NILSN at or below 11000, then on track 043° to cross FLOKA at or above 4000, thence....

TAKEOFF RUNWAY 4R: Climb on heading 036° to 1146, then direct to cross KKELL at or below 7000, then on track 039° to cross NILSN at or below 11000, then on track 043° to cross FLOKA at or above 4000, thence....

TAKEOFF RUNWAY 21L: Climb on heading 216° to intercept course 173° to cross WINRS at or above 2500 and at or below 230K, then on track 094° to cross USSIE at or above 4000, then on track 084° to cross SUURF at or below 7000, then on track 036° to TUURF, then on track 019° to cross FLOKA at or above 4000, thence....

TAKEOFF RUNWAY 21R: Climb on heading 216° to intercept course 175° to cross WINRS, at or above 2500 and at or below 230K, then on track 094° to cross USSIE at or above 4000, then on track 084° to cross SUURF at or below 7000, then on track 036° to TUURF, then on track 019° to cross FLOKA at or above 4000, thence....

TAKEOFF RUNWAY 22L: Climb on heading 216° to intercept course 251° to cross FORDZ at or above 4000, then on track 314° to cross CORVE at or below 7000, then on track 026° to FRBRD, then on track 049° to DINGL, then on track 063° to cross FLOKA at or above 4000, thence....

TAKEOFF RUNWAY 22R: Climb on heading 216° to intercept course 250° to cross FORDZ at or above 4000, then on track 314° to cross CORVE at or below 7000, then on track 026° to FRBRD, then on track 049° to DINGL, then on track 063° to cross FLOKA at or above 4000, thence....

TAKEOFF RUNWAYS 27L/R: Climb on heading 276° to 1146, then on heading 276° or as assigned for RADAR vectors to cross FLOKA at or above 4000, thence....

....on track 049° to cross ZETTR at or below 17000, then on (transition). Maintain 17000 or as assigned by ATC, expect filed altitude 10 minutes after departure.

- DUTEL TRANSITION (ZETTR3.DUTEL):
- ETBOX TRANSITION (ZETTR3.ETBOX):
- KELTI TRANSITION (ZETTR3.KELTI):
- SIKBO TRANSITION (ZETTR3.SIKBO):
- TANKO TRANSITION (ZETTR3.TANKO):

EC-1, 18 APR 2024 to 16 MAY 2024

EC-1, 18 APR 2024 to 16 MAY 2024