

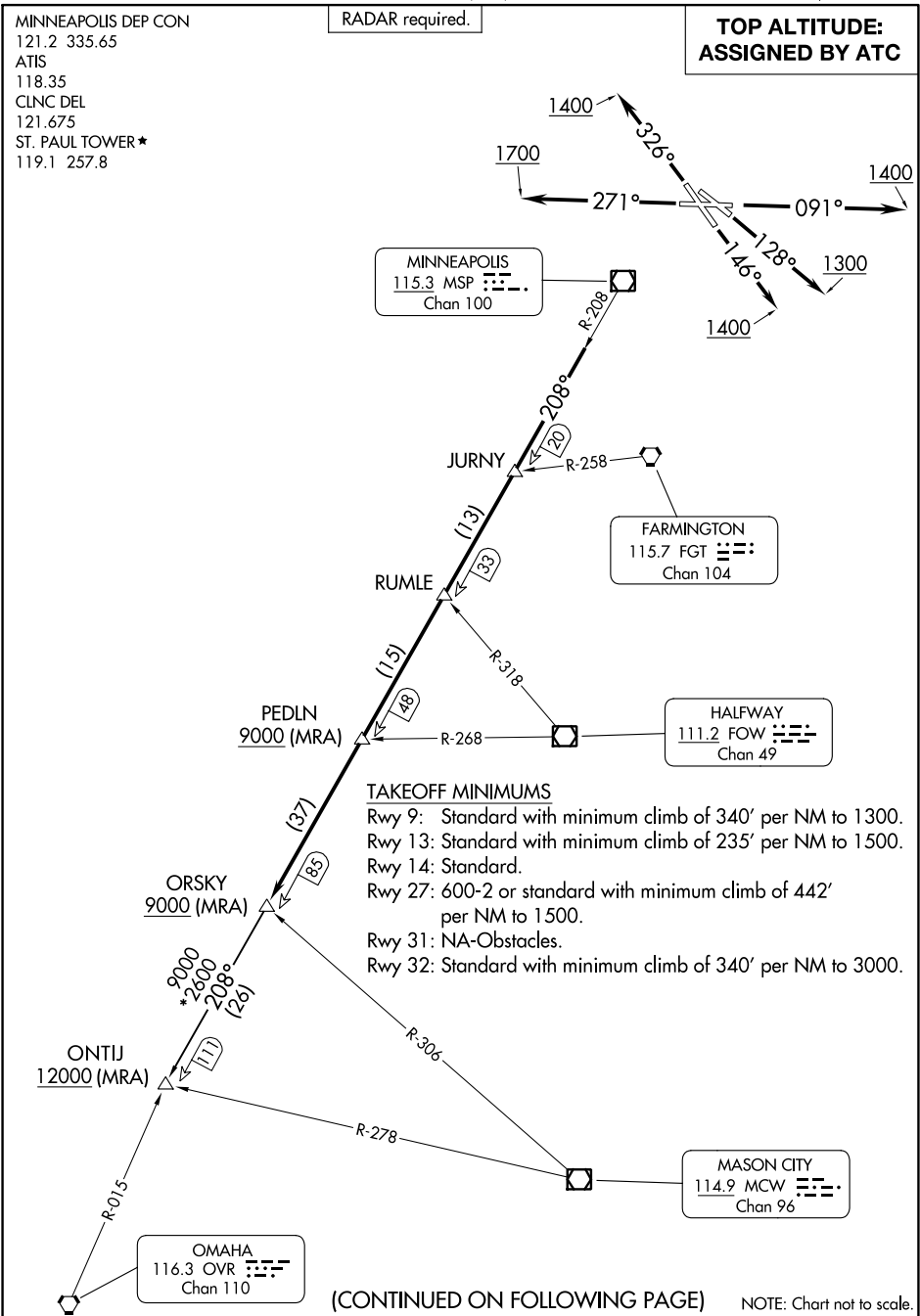
(ORSKY3.ORSKY) 23334
ORSKY THREE DEPARTURE

AL-263 (FAA)
ST PAUL DOWNTOWN HOLMAN FLD (STP)
ST PAUL, MINNESOTA

MINNEAPOLIS DEP CON
121.2 335.65
ATIS
118.35
CLNC DEL
121.675
ST. PAUL TOWER★
119.1 257.8

RADAR required.

TOP ALTITUDE:
ASSIGNED BY ATC



NC-1, 18 APR 2024 to 16 MAY 2024

NC-1, 18 APR 2024 to 16 MAY 2024

ORSKY THREE DEPARTURE
(ORSKY3.ORSKY) 08SEP22

ST PAUL, MINNESOTA
ST PAUL DOWNTOWN HOLMAN FLD (STP)

(CONTINUED ON FOLLOWING PAGE)

NOTE: Chart not to scale.



DEPARTURE ROUTE DESCRIPTION

TAKEOFF RUNWAY 9: Climb on heading 091° to 1400 for RADAR vectors to assigned fix on MSP R-208, then on depicted route to ORSKY. Thence

TAKEOFF RUNWAY 13: Climb on heading 128° to 1300 for RADAR vectors to assigned fix on MSP R-208, then on depicted route to ORSKY. Thence

TAKEOFF RUNWAY 14: Climb on heading 146° to 1400 for RADAR vectors to assigned fix on MSP R-208, then on depicted route to ORSKY. Thence

TAKEOFF RUNWAY 27: Climb on heading 271° to 1700 for RADAR vectors to assigned fix on MSP R-208, then on depicted route to ORSKY. Thence

TAKEOFF RUNWAY 32: Climb on heading 326° to 1400 for RADAR vectors to assigned fix on MSP R-208, then on depicted route to ORSKY. Thence

. . . .on transition or assigned route. Expect filed altitude 10 minutes after departure.

ONTIJ TRANSITION (ORSKY3.ONTIJ): From over ORSKY INT on MSP R-208 to ONTIJ INT.

NC-1, 18 APR 2024 to 16 MAY 2024

NC-1, 18 APR 2024 to 16 MAY 2024