

SWABY NINE DEPARTURE (SWABY9, SWABY)

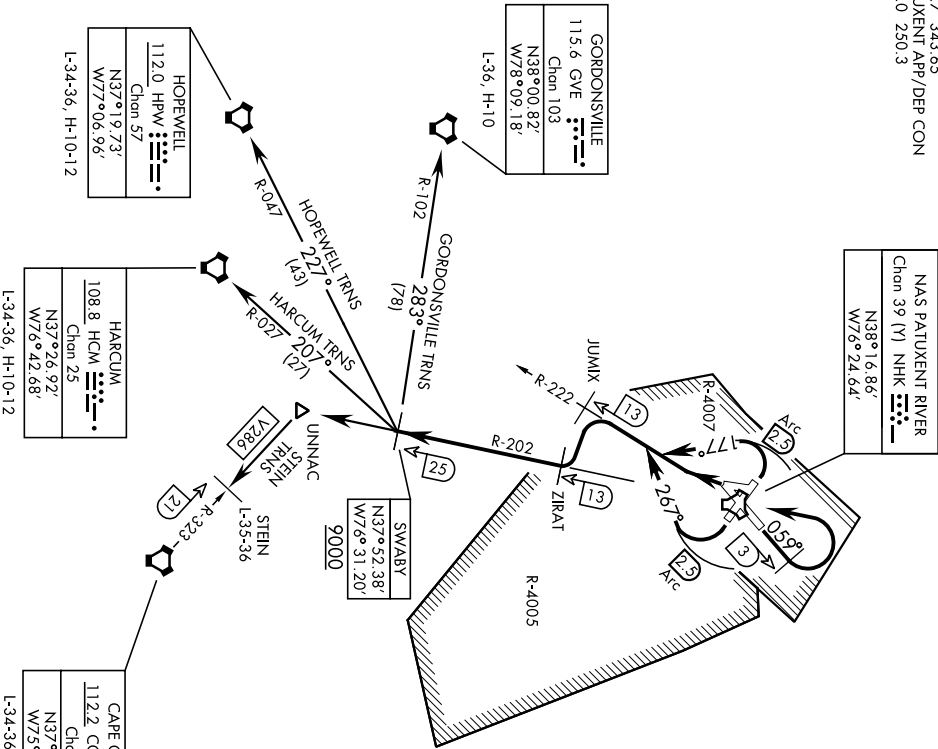
PATUXENT RIVER NAS (TRAPNELL FIELD) (KNHK)

AL-314 [USN]		PATUXENT RIVER, MARYLAND					
Knots		60	120	180	240	300	360
V/V(fpm)		310	620	930	1240	1550	1860

ATC Climb Rate to 9000

Departure Rwy 2-20 not authorized.
Minimum filing dh 10,000'.

- 285
- ATIS 322.425
- CLNC DEL 135.2 316.125
- GND CON 120.6 336.4
- PATUXENT TOWER 123.7 343.65
- PATUXENT APF/DEP CON 121.0 250.3



ATC BRIEF
REQUIRED

135.2 316.125

TACAN REQUIRED

SWABY NINE DEPARTURE (SWABY9, SWABY)
Orig 02DEC21

PATUXENT RIVER, MARYLAND
PATUXENT RIVER NAS (TRAPNELL FIELD) (KNHK)

Note: Chart not to scale
(Continued on next page)

▼	DEPARTURE ROUTE DESCRIPTION
	<p><u>TAKEOFF RWY 6:</u> Climb heading 059°, at NHK TACAN 3 DME turn left direct NHK thence...</p> <p><u>TAKEOFF RWY 14:</u> Climbing right turn heading 267° within NHK TACAN 2.5 DME to intercept NHK R-222, thence...</p> <p><u>TAKEOFF RWY 24:</u> Climbing left turn to intercept NHK TACAN R-222, thence...</p> <p><u>TAKEOFF RWY 32:</u> Climbing left turn heading 177°, to intercept NHK TACAN R-222, thence...</p> <p>...Then on NHK R-222 to JUMIX. Climbing left turn to intercept 13 DME arc to ZIRAT, then turn right on R-202 to SWABY. Then on assigned transition or expect radar vectors.</p> <p><u>GORDONSVILLE TRANSITION (SWABY9.GVE):</u> Cross SWABY at or above 9,000, then on GVE VORTAC R-102 to GVE.</p> <p><u>HARCUM TRANSITION (SWABY9.HCM):</u> Cross SWABY at or above 9,000, then on HCM VORTAC R-027 to HCM.</p> <p><u>HOPEWELL TRANSITION (SWABY9.HPW):</u> Cross SWABY at or above 9,000, then on HPW VORTAC R-047 to HPW.</p> <p><u>STEIN TRANSITION (SWABY9.STEIN):</u> Cross SWABY at or above 9,000, then on NHK R-202 to UNNAC, then on CCV VORTAC R-323 to STEIN.</p>