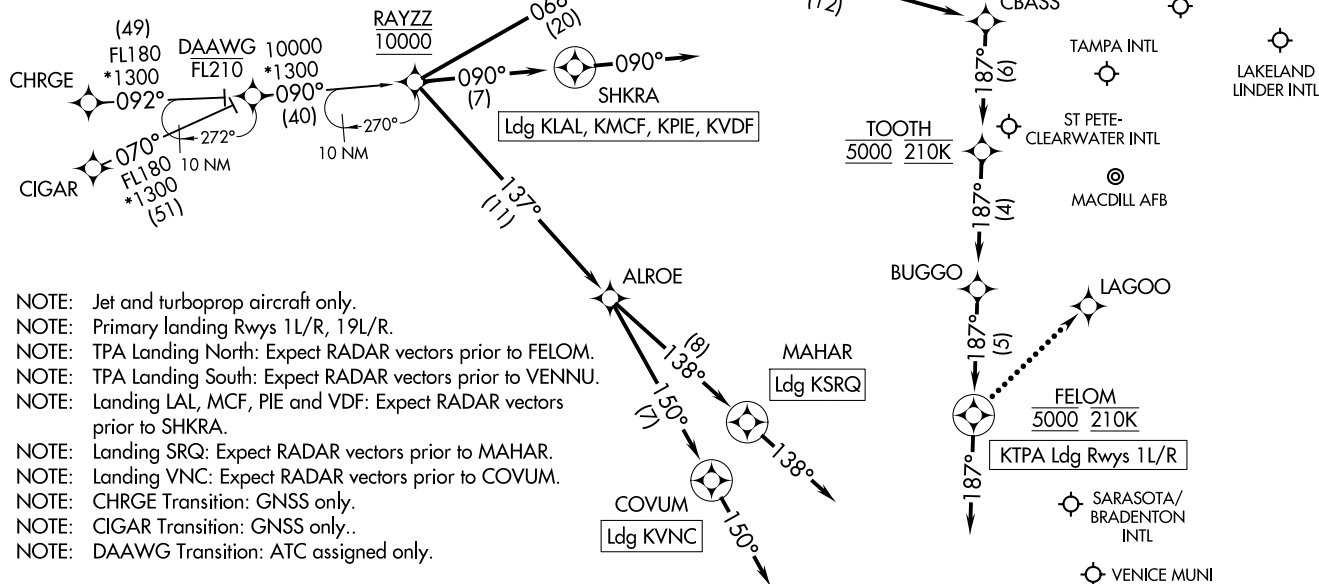


RAYZZ TWO ARRIVAL (RNAV)
(RAYZZ.RAYZZ2) 02DEC21

TAMPA APP CON
118.8 239.3
KMCF ATIS
133.825 270.1
LAL ATIS
118.025
PIE ATIS
134.5
SRQ ATIS
124.375
TPA D-ATIS
126.45

RNAV 1 - DME/DME/IRU or GPS.
CHRG and CIGAR Transitions - GPS.

RADAR required.



(NARRATIVE ON FOLLOWING PAGE)

NOTE: Chart not to scale.

TAMPA, FLORIDA

RAYZZ TWO ARRIVAL (RNAV)
23054

AL-416 (FAA)

TAMPA, FLORIDA

ARRIVAL ROUTE DESCRIPTION

CHRGE TRANSITION (CHRG.RAYZZ2)
CIGAR TRANSITION (CIGAR.RAYZZ2)
DAAWG TRANSITION (DAAWG.RAYZZ2)

KTPA:
From RAYZZ on track 068° to HIDOS.

LANDING KTPA RUNWAYS 1L/R: From HIDOS on track 111° to CBASS, then on track 187° to cross TOOTH at 5000 and at 210K, then on track 187° to BUGGO, then on track 187° to cross FELOM at 5000 and at 210K, then on track 187°. Expect RADAR vectors to final approach course.

LANDING KTPA RUNWAYS 10, 28: From HIDOS on track 093° to BAYAD, then on heading 095° or as assigned by ATC. Expect RADAR vectors to final approach course.

LANDING KTPA RUNWAYS 19L/R: From HIDOS on track 093° to ENTAH, then on track 005° to cross VENNU at 5000 and at 210K, then on track 006°. Expect RADAR vectors to final approach course.

LANDING KPIE/KMCF/KVDF/KLAL: From RAYZZ on track 090° to SHKRA, then on track 090°. Expect RADAR vectors to final approach course.

LANDING KSRQ: From RAYZZ on track 137° to ALROE, then on track 138° to MAHAR, then on track 138°. Expect RADAR vectors to final approach course.

LANDING KVNC: From RAYZZ on track 137° to ALROE, then on track 150° to COVUM, then on track 150°. Expect RADAR vectors to final approach course.

LOST COMMUNICATIONS

KTPA LANDING NORTH: Continue track to FELOM, proceed direct LAGOO, conduct Rwy 1L approach.

KTPA LANDING SOUTH: Continue track to VENNU, proceed direct FADDI, conduct Rwy 19R approach.