

RNAV 1 - DME/DME/IRU or GPS.
RADAR required for non-GPS equipped aircraft.

TOP ALTITUDE:
14000

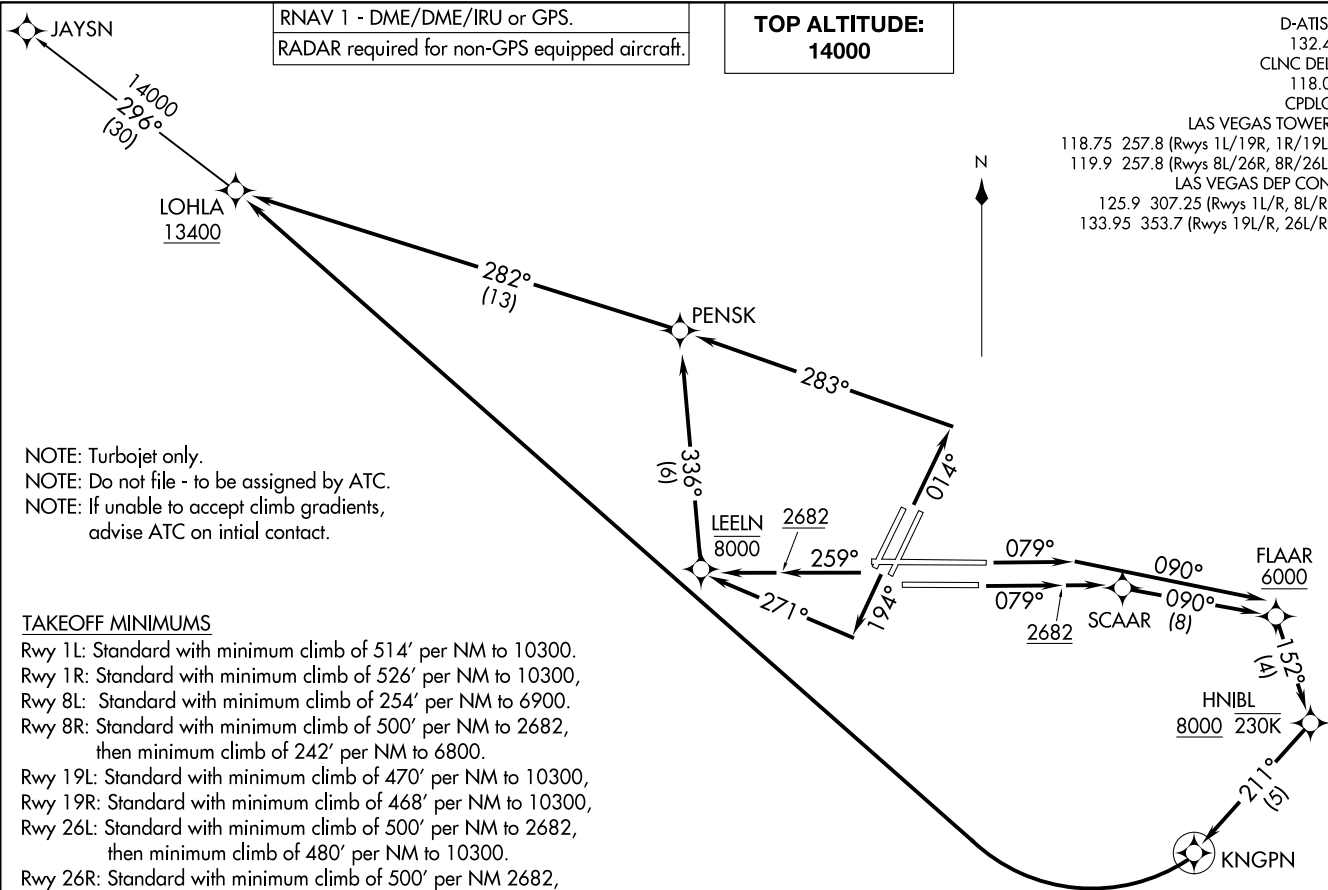
D-ATIS
132.4
CLNC DEL
118.0
CPDLC

LAS VEGAS TOWER
118.75 257.8 (Rwys 1L/19R, 1R/19L)
119.9 257.8 (Rwys 8L/26R, 8R/26L)
LAS VEGAS DEP CON
125.9 307.25 (Rwys 1L/R, 8L/R)
133.95 353.7 (Rwys 19L/R, 26L/R)

(LOHLA3.LOHLA) 22307
LOHLA THREE DEPARTURE (RNAV)

AL-662 (FAA)

HARRY REID INTL (LAS)
LAS VEGAS, NEVADA



(NARRATIVE ON FOLLOWING PAGE)

NOTE: Chart not to scale.

LOHLA THREE DEPARTURE (RNAV)
(LOHLA3.LOHLA) 03NOV22

LAS VEGAS, NEVADA
HARRY REID INTL (LAS)



DEPARTURE ROUTE DESCRIPTION

TAKEOFF RUNWAYS 1L/R: Climb on heading 014° to intercept course 283° to PENSK, then on track 282° to cross LOHLA at or above 13400, thence. . . .

TAKEOFF RUNWAY 8L: Climb on heading 079° to intercept course 090° to cross FLAAR at or above 6000, then on track 152° to cross HNIBL at or above 8000 and at or below 230K, then on track 211° to KNGPN, then right turn direct LOHLA at or above 13400, thence. . . .

TAKEOFF RUNWAY 8R: Climb on heading 079° to 2682, then direct SCAAR, then on track 090° to cross FLAAR at or above 6000, then on track 152° to cross HNIBL at or above 8000 and at or below 230K, then on track 211° to KNGPN, then right turn direct LOHLA at or above 13400, thence. . . .

TAKEOFF RUNWAYS 19L/R: Climb on heading 194° to intercept course 271° to LEELN at or below 8000, then on track 336° to PENSK, then on track 282° to cross LOHLA at or above 13400, thence. . . .

TAKEOFF RUNWAYS 26L/R: Climb on heading 259° to 2682, then direct LEELN at or below 8000, then on track 336° to PENSK, then on track 282° to cross LOHLA at or above 13400, thence. . . .

. . . . on (transition), maintain 14000. Expect filed altitude 10 minutes after departure.

JAYSN TRANSITION (LOHLA3.JAYSN)

SW-4, 18 APR 2024 to 16 MAY 2024

SW-4, 18 APR 2024 to 16 MAY 2024