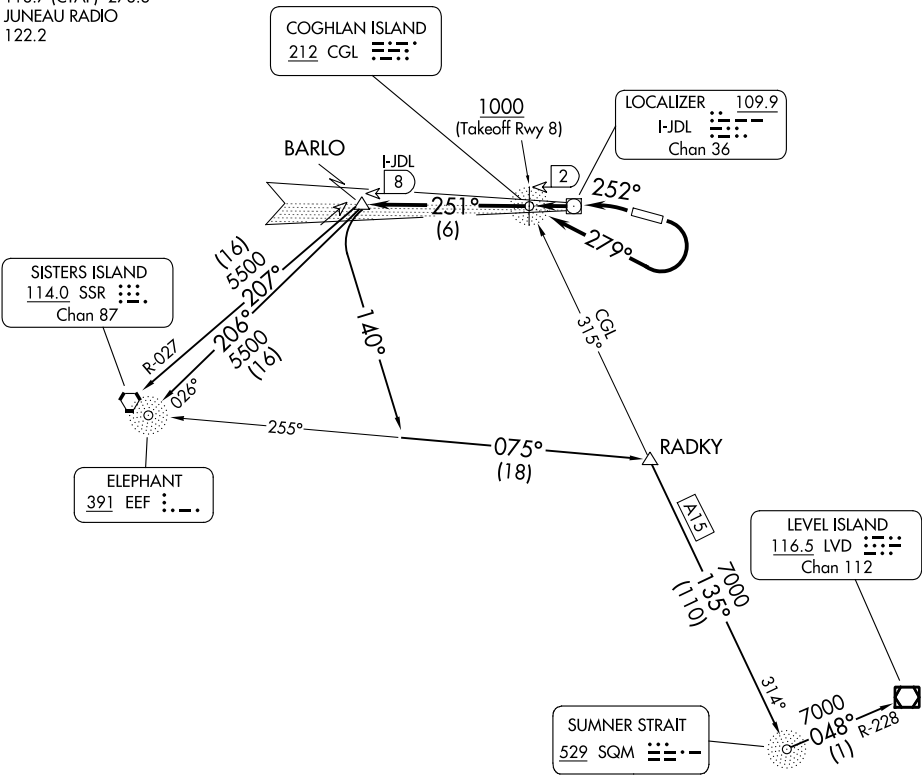


ANCHORAGE CENTER
133.9
ATIS
135.2
GND CON
121.9
JUNEAU TOWER ★
118.7 (CTAF) 278.3
JUNEAU RADIO
122.2



TAKEOFF MINIMUMS

Rwy 8: 1000-3 with minimum climb from 1000 as stated per transition.
Rwy 26: 600-2 or standard with minimum climb of 595' per NM to 800, then as stated per transition.

NOTE: SISTERS ISLAND and ELEPHANT Transitions: Minimum climb of 330' per NM to 2800.
NOTE: LEVEL ISLAND and SUMNER STRAIT Transitions: Minimum climb of 385' per NM to 4600'.
NOTE: ADF required.
NOTE: Obtain ATC approval for this procedure if not issued as part of the IFR clearance.
CAUTION: Rapidly rising terrain to 3000' MSL north, south and east of airport.

DEPARTURE ROUTE DESCRIPTION

TAKEOFF RUNWAY 8: Climbing right turn as soon as practical. Climb in visual conditions direct CGL NDB or heading 279° to I-JDL West course/2 DME (visual conditions must be maintained from takeoff until established over CGL NDB or I-JDL West course/2 DME at or above 1000 MSL), thence. . . .

TAKEOFF RUNWAY 26: Climbing left turn heading 252° to CGL NDB or I-JDL West course/2 DME, thence. . . .

. . . .on I-JDL West course or 251° bearing from CGL NDB to BARLO I-JDL 8 DME, then on (transition).

ELEPHANT TRANSITION (JNU6.EEF): From over BARLO INT on EEF bearing 026° to EEF NDB.

LEVEL ISLAND TRANSITION (JNU6.LVD): From over BARLO INT on heading 140° and EEF bearing 075° to RADKY INT, then on SQM bearing 314° to SQM NDB, then on SQM bearing 048° and LVD R-228 to LVD VOR/DME.

SISTERS ISLAND TRANSITION (JNU6.SSR): From over BARLO INT on SSR R-027 to SSR VORTAC.

SUMNER STRAIT TRANSITION (JNU6.SQM): From over BARLO INT on heading 140° and EEF bearing 075° to RADKY INT, then on SQM bearing 314° to SQM NDB.

TAKEOFF OBSTACLE NOTES

- Rwy 8: Trees beginning 47' from DER, on centerline, up to 1' AGL/66' MSL.
- Rwy 26: Navaid, 133' from DER, 469' right of centerline, 23' AGL/45' MSL.

Trees beginning 1157' from DER, 572' right of centerline, up to 81' MSL.

Tree 5798' from DER, 567' right of centerline, 180' MSL.

Trees beginning 5943' from DER, 229' right of centerline, up to 196' MSL.

Tree 6037' from DER, 727' right of centerline, up to 223' MSL.

Tree 1 NM from DER, 276' left of centerline, 178' MSL.

Trees beginning 1 NM from DER, 41' right of centerline, up to 269' MSL.

Trees beginning 1 NM from DER, 124' left of centerline, up to 228' MSL.

Trees beginning 1 NM from DER, 686' right of centerline, up to 281' MSL.

Trees beginning 1 NM from DER, 118' right of centerline, up to 298' MSL.

Trees beginning 1 NM from DER, 281' left of centerline, up to 269' MSL.

Trees beginning 1 NM from DER, 82' left of centerline, up to 273' MSL.

Trees beginning 1 NM from DER, 62' left of centerline, up to 334' MSL.

Trees beginning 1 NM from DER, 898' right of centerline, up to 317' MSL.

Trees beginning 1 NM from DER, 125' right of centerline, up to 339' MSL.

Trees beginning 1 NM from DER, 315' right of centerline, up to 348' MSL.

Trees beginning 1 NM from DER, 1483' right of centerline, up to 364' MSL.

Trees beginning 1.1 NM from DER, 80' left of centerline, up to 370' MSL.

Trees beginning 1.1 NM from DER, 129' right of centerline, up to 365' MSL.

Trees beginning 1.1 NM from DER, 312' right of centerline, up to 373' MSL.

Trees, tower beginning 1.1 NM from DER, 91' left of centerline, up to 403' MSL.

Trees beginning 1.1 NM from DER, 90' right of centerline, up to 402' MSL.

Tree 1.1 NM from DER, 712' right of centerline, 409' MSL.

Trees beginning 1.1 NM from DER, 165' right of centerline, up to 454' MSL.

Tree 1.1 NM from DER, 260' left of centerline, 409' MSL.

Trees, tower, poles beginning 1.1 NM from DER, 36' left of centerline, up to 435' MSL.

Tree 1.1 NM from DER, 721' right of centerline, 474' MSL.

Tree 1.1 NM from DER, 863' right of centerline, 488' MSL.

Tree 1.1 NM from DER, 997' right of centerline, 503' MSL.

Trees beginning 1.1 NM from DER, 550' right of centerline, up to 504' MSL.

Trees beginning 1.1 NM from DER, 141' right of centerline, up to 520' MSL.

Trees beginning 1.2 NM from DER, 100' right of centerline, up to 541' MSL.

Towers, trees beginning 1.2 NM from DER, 114' right of centerline, up to 63' AGL/588' MSL.