

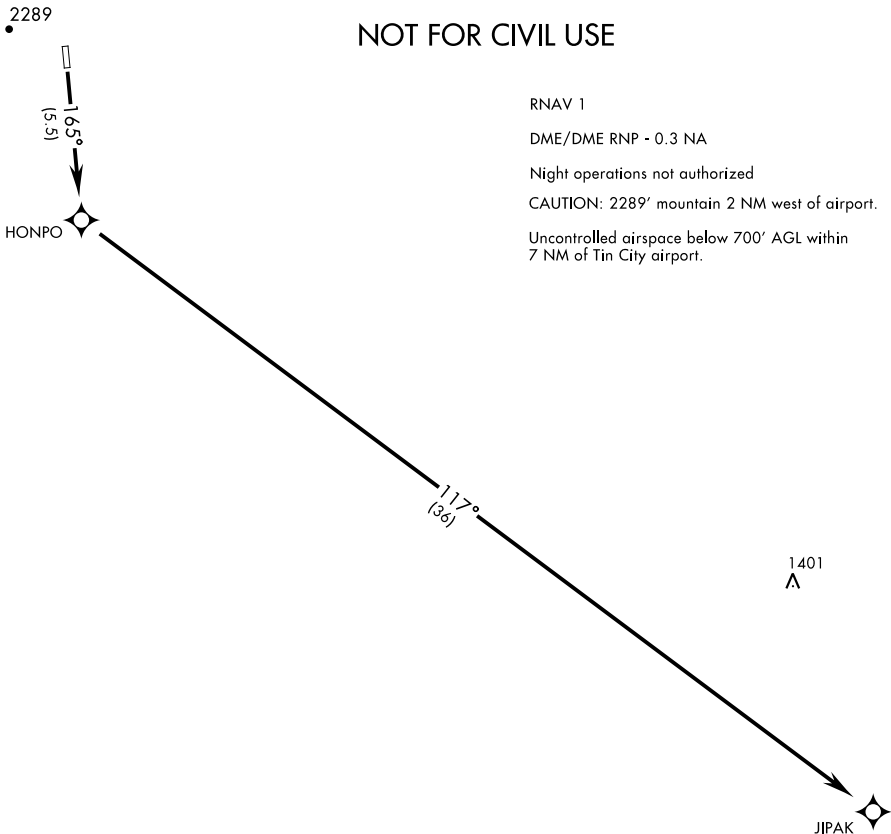
UNICOM (CTAF)
126.2
TIN CITY RCO (NOME RADIO)
122.6
ANCHORAGE CENTER
133.3 290.4

AL-2334 [USAF]

MILITARY CERTIFIED
AIRCREWS OR AUTHORIZED
CONTRACT AIRCRAFT ONLY

NOT FOR CIVIL USE

RNAV 1
DME/DME RNP - 0.3 NA
Night operations not authorized
CAUTION: 2289' mountain 2 NM west of airport.
Uncontrolled airspace below 700' AGL within
7 NM of Tin City airport.



GPS REQUIRED

▼

DEPARTURE ROUTE DESCRIPTION

TAKE-OFF RWY 16: Climb to 7000 direct HONPO, then climbing left turn, track 117° to JIPAK.

TAKE-OFF RWY 34: NA

AK, 21 MAR 2024 to 16 MAY 2024

AK, 21 MAR 2024 to 16 MAY 2024