

(CRIED1.CRIED) 21280

CRIED ONE DEPARTURE

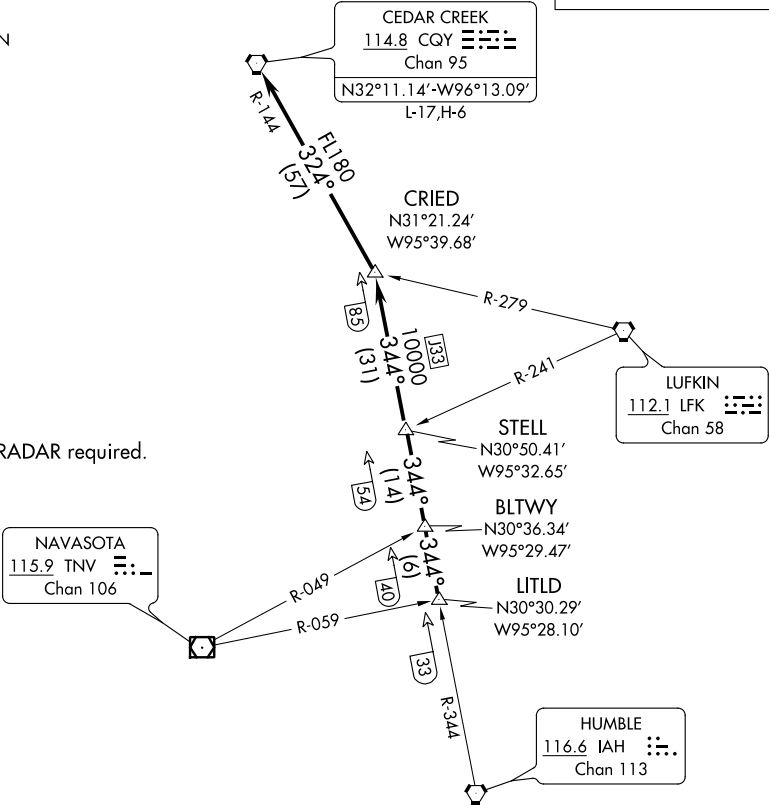
AL-5433 (FAA)

LA PORTE MUNI (T41)
LA PORTE, TEXAS

CLNC DEL
125.6
CTAF
122.7
HOUSTON DEP CON
134.45 284.0

TOP ALTITUDE:
ASSIGNED BY ATC

NOTE: RADAR required.



TAKEOFF MINIMUMS
Rwys 5, 12, 23, 30: Standard.

(NARRATIVE ON FOLLOWING PAGE)

NOTE: Chart not to scale.

CRIED ONE DEPARTURE

(CRIED1.CRIED) 07OCT21

LA PORTE, TEXAS
LA PORTE MUNI (T41)

SC-5, 18 APR 2024 to 16 MAY 2024

SC-5, 18 APR 2024 to 16 MAY 2024



DEPARTURE ROUTE DESCRIPTION

TAKEOFF RUNWAY 5: Climb on heading 046° to 500 before turning. When entering controlled airspace, climb on assigned heading for RADAR vectors to LITLD INT. Maintain ATC assigned altitude. Expect filed altitude 10 minutes after departure, thence

TAKEOFF RUNWAY 12: Climb on heading 121° to 500 before turning. When entering controlled airspace, climb on assigned heading for RADAR vectors to LITLD INT. Maintain ATC assigned altitude. Expect filed altitude 10 minutes after departure, thence

TAKEOFF RUNWAY 23: When entering controlled airspace, climb on assigned heading for RADAR vectors to LITLD INT. Maintain ATC assigned altitude. Expect filed altitude 10 minutes after departure, thence

TAKEOFF RUNWAY 30: Climb on heading 301° to 700 before turning. When entering controlled airspace, climb on assigned heading for RADAR vectors to LITLD INT. Maintain ATC assigned altitude. Expect filed altitude 10 minutes after departure, thence

. . . . on IAH R-344 to STELL INT, then on IAH R-344 to CRIED INT, then left turn on CQY R-144 to CQY VORTAC.

SC-5, 18 APR 2024 to 16 MAY 2024

SC-5, 18 APR 2024 to 16 MAY 2024