

LEONA FOUR DEPARTURE

AL-5433 (FAA)

LA PORTE MUNI (T41)

LA PORTE, TEXAS

TOP ALTITUDE: ASSIGNED BY ATC

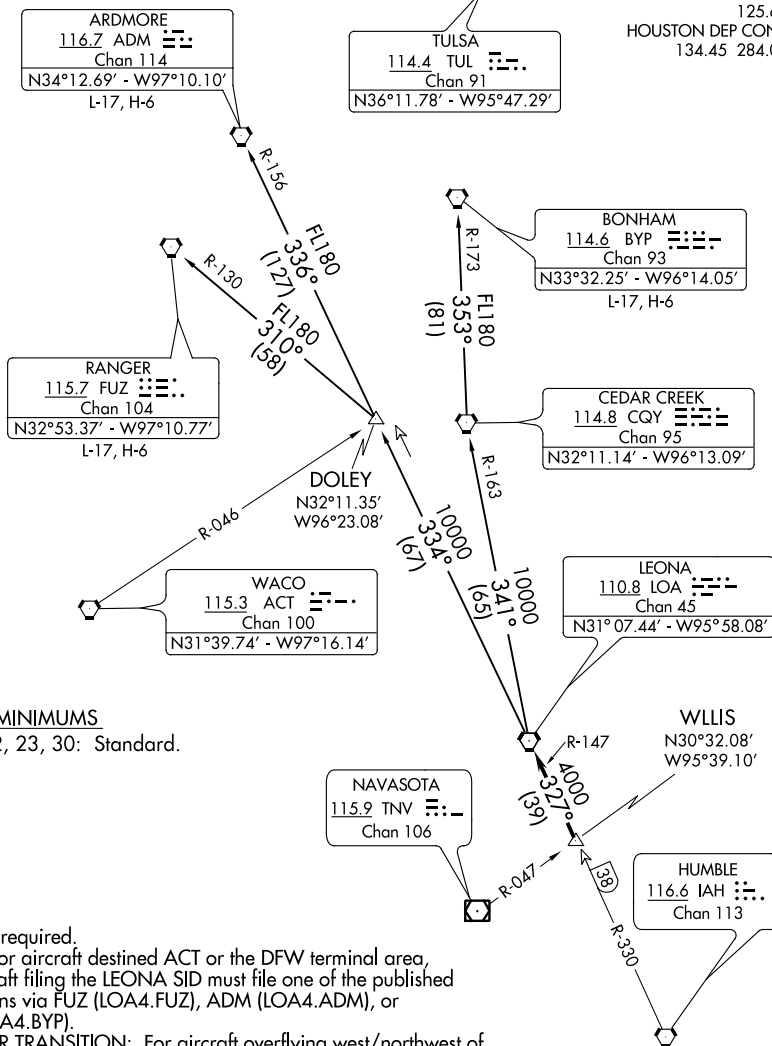
CTAF

CLNC DEL

125.6

HOUSTON DEP CON

134.45 284.0



TAKEOFF MINIMUMS

Rwys 5, 12, 23, 30: Standard.

NOTE: RADAR required.

NOTE: Except for aircraft destined ACT or the DFW terminal area, all aircraft filing the LEONA SID must file one of the published transitions via FUZ (LOA4.FUZ), ADM (LOA4.ADM), or BYP (LOA4.BYP).

NOTE: RANGER TRANSITION: For aircraft overflying west/northwest of the DFW terminal area FL240 and above.

NOTE: ARDMORE TRANSITION: For aircraft overflying north/northwest of the DFW terminal area FL240 and above.

NOTE: BONHAM TRANSITION: For aircraft overflying/landing TUL VORTAC FL240 and above.

NOTE: Chart not to scale.

(NARRATIVE ON FOLLOWING PAGE)

LEONA FOUR DEPARTURE

(LOA4.LOA) 07OCT21

LA PORTE, TEXAS

LA PORTE MUNI (T41)

SC-5, 18 APR 2024 to 16 MAY 2024

▼ DEPARTURE ROUTE DESCRIPTION	
<p><u>TAKEOFF RUNWAY 5:</u> Climb on heading 046° to 500 before turning. When entering controlled airspace, climb on assigned heading for RADAR vectors to WLLIS INT. Maintain ATC assigned altitude. Expect filed altitude 10 minutes after departure, thence</p> <p><u>TAKEOFF RUNWAY 12:</u> Climb on heading 121° to 500 before turning. When entering controlled airspace, climb on assigned heading for RADAR vectors to WLLIS INT. Maintain ATC assigned altitude. Expect filed altitude 10 minutes after departure, thence</p> <p><u>TAKEOFF RUNWAY 23:</u> When entering controlled airspace, climb on assigned heading for RADAR vectors to WLLIS INT. Maintain ATC assigned altitude. Expect filed altitude 10 minutes after departure, thence</p> <p><u>TAKEOFF RUNWAY 30:</u> Climb on heading 301° to 700 before turning. When entering controlled airspace, climb on assigned heading for RADAR vectors to WLLIS INT. Maintain ATC assigned altitude. Expect filed altitude 10 minutes after departure, thence</p> <p>. . . . on LOA R-147 to LOA VORTAC.</p> <p><u>ARDMORE TRANSITION (LOA4.ADM):</u> From over LOA VORTAC on LOA R-334 to DOLEY INT, then on ADM R-156 to ADM VORTAC.</p> <p><u>BONHAM TRANSITION (LOA4.BYP):</u> From over LOA VORTAC on LOA R-341 and CQY R-163 to CQY VORTAC, then on BYP R-173 to BYP VORTAC.</p> <p><u>RANGER TRANSITION (LOA4.FUZ):</u> From over LOA VORTAC on LOA R-334 to DOLEY INT, then on FUZ R-130 to FUZ VORTAC.</p>	

SC-5, 18 APR 2024 to 16 MAY 2024

SC-5, 18 APR 2024 to 16 MAY 2024