

(INDIE8.INDIE) 21280

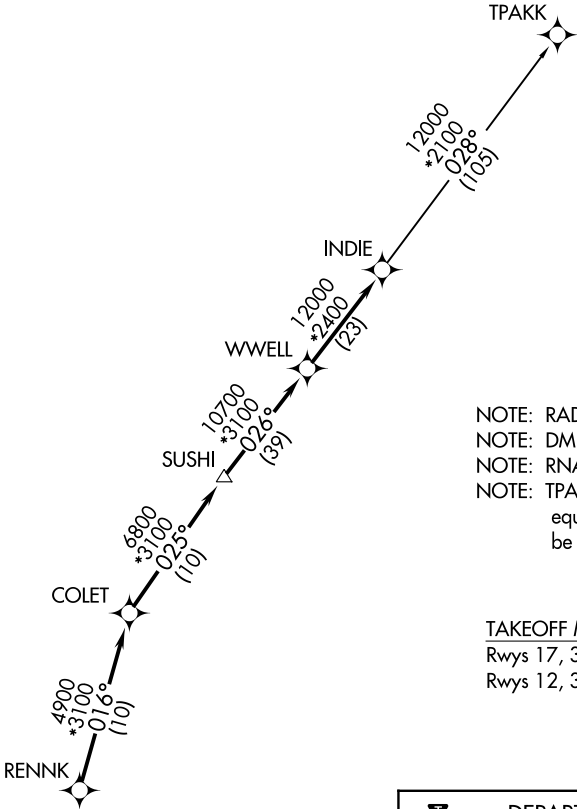
AL-6395 (FAA)

CHAMBERS COUNTY (T00)  
ANAHUAC, TEXAS

INDIE EIGHT DEPARTURE (RNAV)

CTAF  
122.9  
HOUSTON DEP CON  
134.45 284.0

TOP ALTITUDE:  
ASSIGNED BY ATC



NOTE: RADAR required.  
NOTE: DME/DME/IRU or GPS required.  
NOTE: RNAV 1.  
NOTE: TPAKK TRANSITION: For non GPS equipped aircraft TNV DME must be operational.

TAKEOFF MINIMUMS  
Rwys 17, 35: NA-Environmental  
Rwys 12, 30: Standard with minimum climb of 500' per NM to 540.

DEPARTURE ROUTE DESCRIPTION

TAKEOFF RUNWAY 12: Climb on heading 124° to 540 for RADAR vectors to RENNK, then . . . .  
TAKEOFF RUNWAY 30: Climb on heading 304° to 540 for RADAR vectors to RENNK, then . . . .  
. . . . on track 016° to COLET, then on track 025° to SUSHI, then on track 026° to WWELL, then on track 026° to INDIE, then on (transition). Maintain ATC assigned altitude. Expect filed altitude 10 minutes after departure.

TPAKK TRANSITION (INDIE8.TPAKK)

NOTE: Chart not to scale.

INDIE EIGHT DEPARTURE (RNAV)  
(INDIE8.INDIE) 07OCT21

ANAHUAC, TEXAS  
CHAMBERS COUNTY (T00)

SC-5, 18 APR 2024 to 16 MAY 2024

SC-5, 18 APR 2024 to 16 MAY 2024