

MAYNR TWO DEPARTURE(RNAV)
(MAYNR2.MAYNR) 21MAR24

MIAMI HOMESTEAD GENERAL AVIATION (X51)
HOMESTEAD, FLORIDA

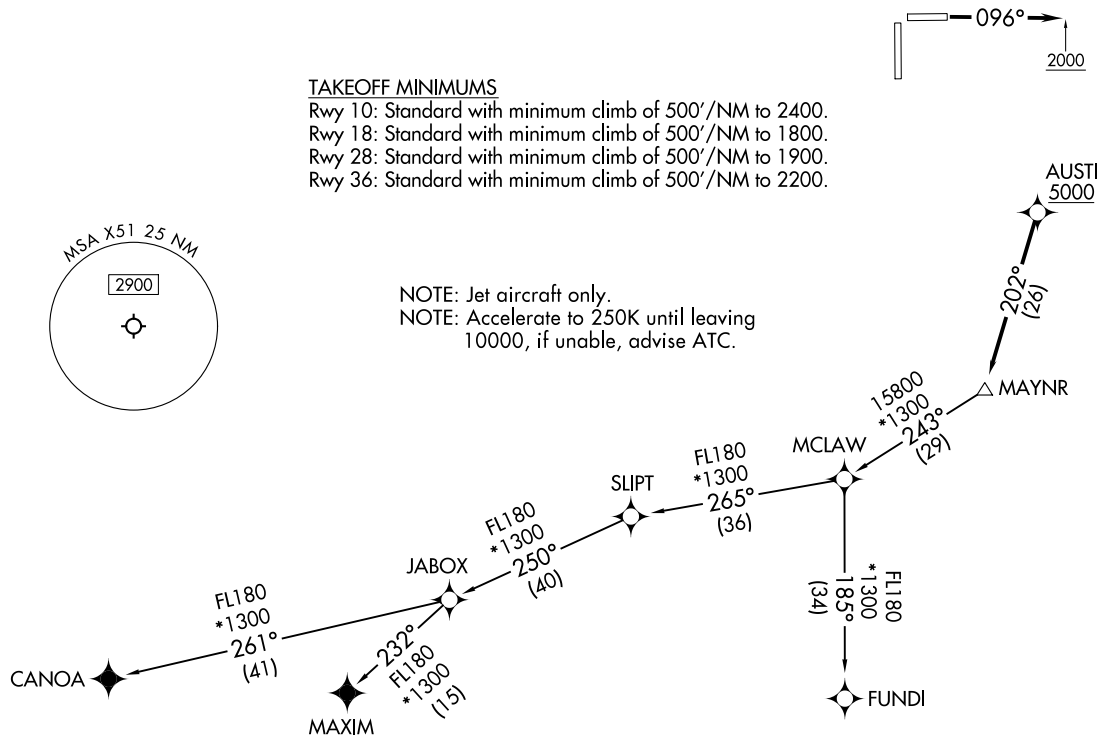
MIAMI DEP CON
125.5 354.1
AWOS-3
118.375
CTAF
122.8

RNAV1 - DME/DME/IRU or GPS.
From SLIPT to MAXIM: RNAV 1- GPS.
From SLIPT to CANOA: RNAV 1- GPS.
RADAR required.

TOP ALTITUDE:
ASSIGNED BY ATC

(MAYNR2.MAYNR) 24081
MAYNR TWO DEPARTURE(RNAV)

AL-10263 (FAA)
MIAMI HOMESTEAD GENERAL AVIATION (X51)
HOMESTEAD, FLORIDA



NOTE: Chart not to scale.

(CONTINUED ON FOLLOWING PAGE)



DEPARTURE ROUTE DESCRIPTION

TAKEOFF RUNWAY 10: Climb on heading 096° to 2000, then as assigned by ATC for vectors to cross AUSTI at or above 5000, thence. . . .

TAKEOFF RUNWAYS 18, 28, 36: Climb on heading assigned by ATC for vectors to cross AUSTI or above 5000, thence. . . .

. . . .on track 202° to MAYNR, then on assigned transition, maintain ATC assigned altitude. Expect clearance to filed altitude within 10 minutes after departure.

- CANOA TRANSITION (MAYNR2.CANOA)
- FUNDI TRANSITION (MAYNR2.FUNDI)
- MAXIM TRANSITION (MAYNR2.MAXIM)

SE-3, 18 APR 2024 to 16 MAY 2024

SE-3, 18 APR 2024 to 16 MAY 2024