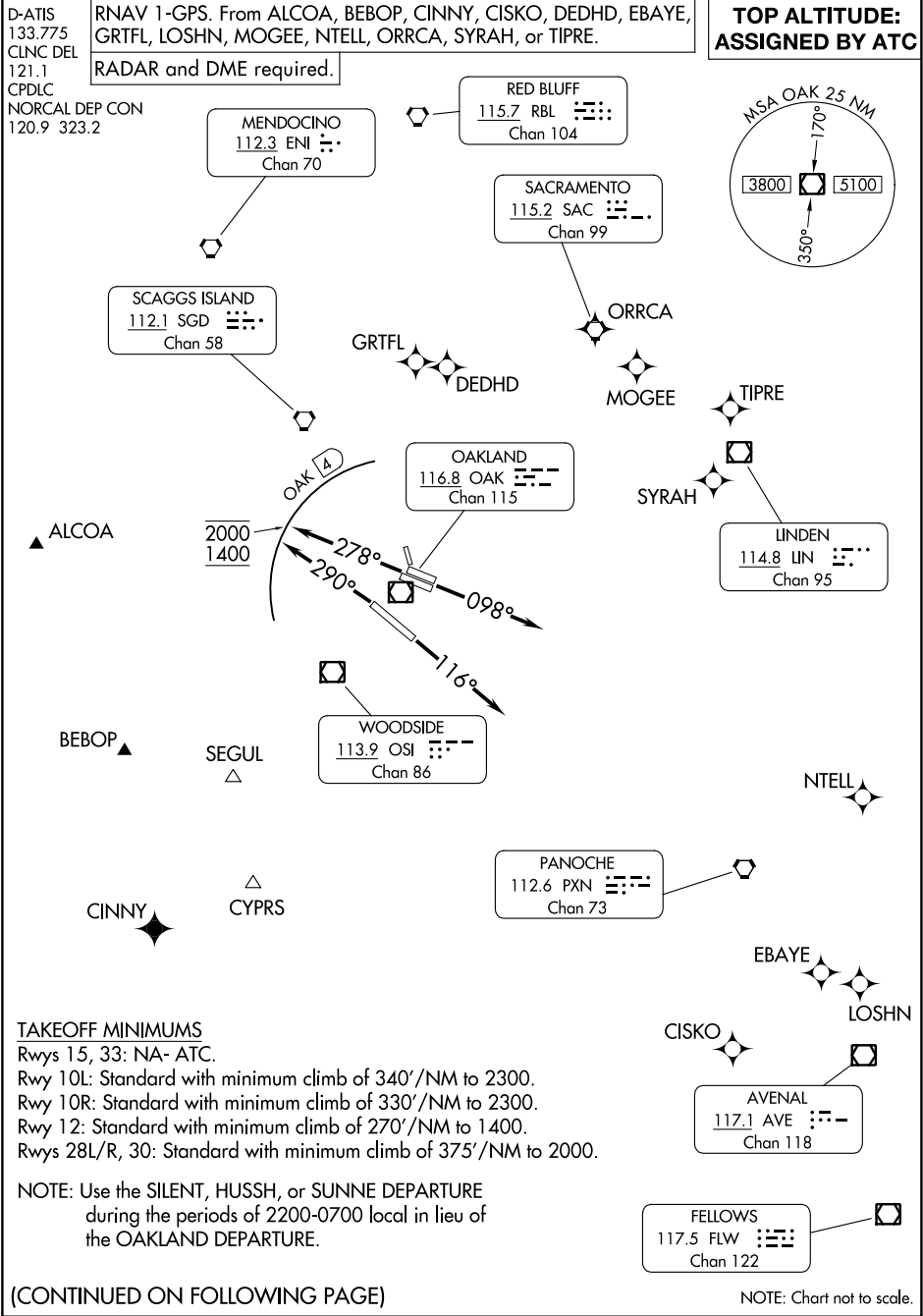


(OAK6.OAK) 24025

OAKLAND SIX DEPARTURE

AL-294 (FAA)

METRO OAKLAND INTL (OAK)
OAKLAND, CALIFORNIA



OAKLAND SIX DEPARTURE
(OAK6.OAK) 25JAN24

OAKLAND, CALIFORNIA
METRO OAKLAND INTL (OAK)

DEPARTURE ROUTE DESCRIPTION	
<div><div>TAKEOFF RUNWAYS 10L/R: Climb on heading 098° for RADAR vectors to assigned route/fix, thence. . . .</div><div>TAKEOFF RUNWAY 12: Climb on heading 116° for RADAR vectors to assigned route/fix, thence. . . .</div><div>TAKEOFF RUNWAYS 28L/R: Climb on heading 278° for RADAR vectors to assigned route/fix. Cross 4 DME northwest of OAK VOR/DME at or above 1400 and at or below 2000, thence. . . .</div><div>TAKEOFF RUNWAY 30: Climb on heading 290° for RADAR vectors to assigned route/fix. Cross 4 DME northwest of OAK VOR/DME at or above 1400 and at or below 2000, thence. . . .</div><div>. . . .maintain ATC assigned altitude. Expect filed altitude ten minutes after departure.</div><div>LOST COMMUNICATIONS: If not in contact with departure control after reaching 5000', continue climb to assigned altitude and proceed direct to assigned route/fix.</div></div>	

SW-2, 16 MAY 2024 to 13 JUN 2024

SW-2, 16 MAY 2024 to 13 JUN 2024