

APP CRS **152°**
 Rwy Idg **6069**
 TDZE **968**
 Apt Elev **969**

RNAV (GPS) RWY 15

SMITH REYNOLDS (INT)

RNP APCH.

When local altimeter setting not received, use Piedmont Triad Intl altimeter setting and increase all MDA 40 feet and Circling Cats C/D visibility ¼ SM. Circling Rwy 4, 22 NA at night. Rwy 15 helicopter visibility reduction below ¾ SM NA.

MISSED APPROACH:
 Climb to 3000 direct COLEB and on track 102° to GSO VORTAC and hold.

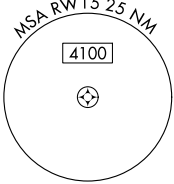
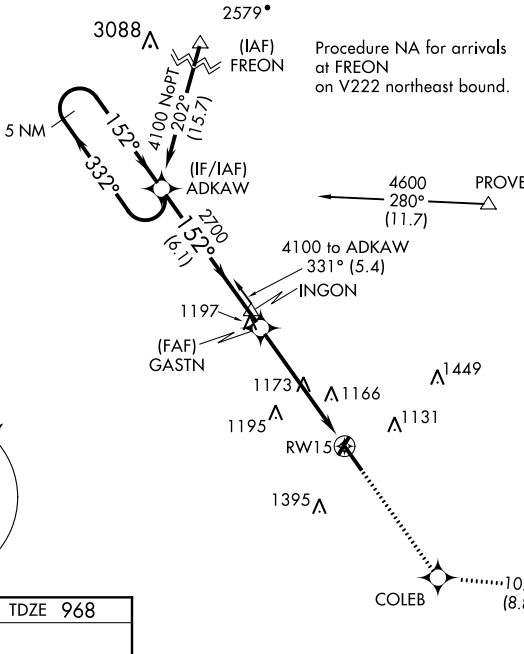
ATIS
121.3

GREENSBORO APP CON
124.35 269.225

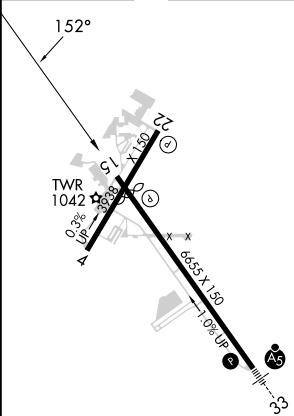
WINSTON-SALEM TOWER ★
123.75 (CTAF) 0 257.8

GND CON
128.25

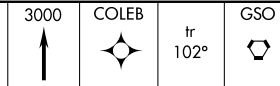
UNICOM
122.95



ELEV 969 **D** TDZE 968



VGSI and descent angles not coincident (VGSI Angle 3.00/TCH 38).



CATEGORY	A	B	C	D
LNAV MDA	1440-1	472 (500-1)	1440-1 $\frac{3}{8}$	472 (500-1 $\frac{3}{8}$)
CIRCLING	1480-1 511 (600-1)	1580-1 611 (700-1)	1700-2 731 (800-2)	1760-2 $\frac{1}{2}$ 791 (800-2 $\frac{1}{2}$)

MIRL Rwy 4-22
 REIL Rwy 15
 HIRL Rwy 15-33

SE-2, 16 MAY 2024 to 13 JUN 2024

SE-2, 16 MAY 2024 to 13 JUN 2024