

ALTUS, OKLAHOMA

ILS Z or LOC RWY 36L

LOC I-LTS 110.3	APCH CRS 355°	Rwy Idg 13,440 TDZE 1354 Arpt Elev 1382
---------------------------	-------------------------	---

AL-482 [USAF]

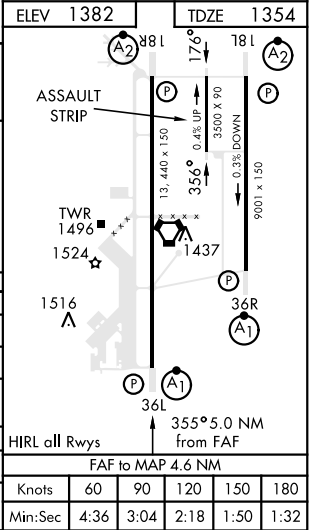
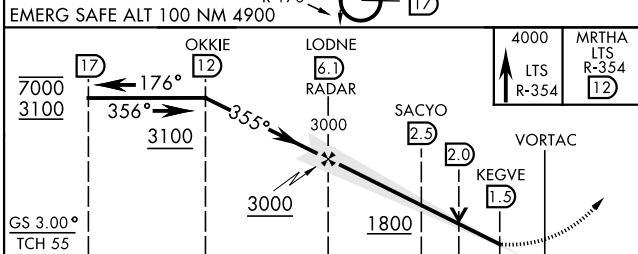
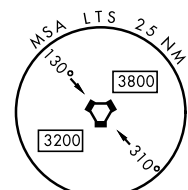
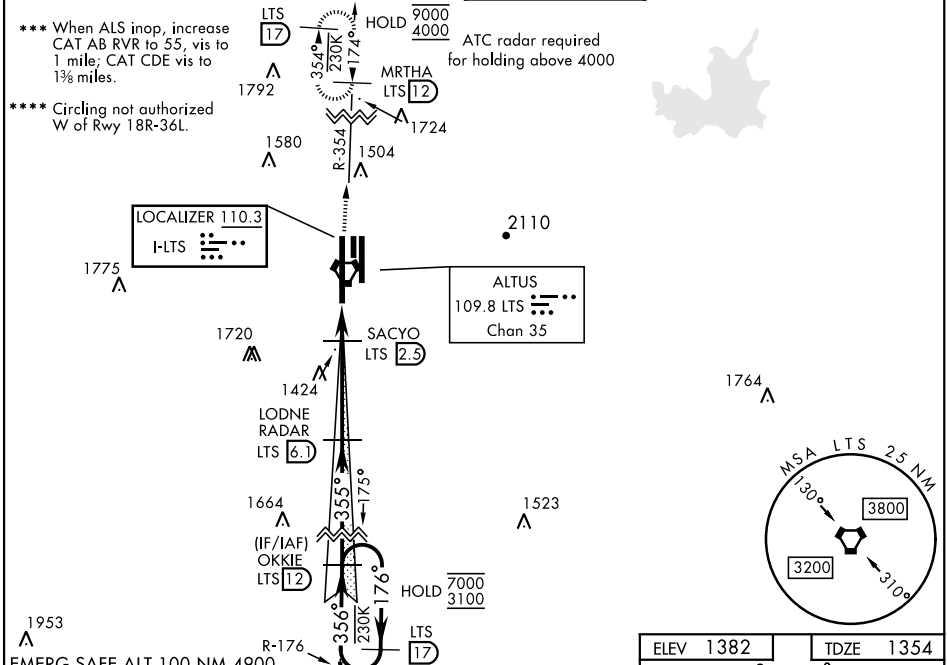
ALTUS AFB (KLTS)

DME or RADAR required.	ALSIF-1 	MISSED APPROACH: Climb to 4000, intercept LTS VORTAC R-354 to MRTHA and hold.
<p>▼ * When ALS inop, increase RVR to 40 and vis to 3/8 mile; RVR 18 authorized with use of FD or AP or HUD to DA. ** When ALS inop, increase RVR to 55 and vis to 1 mile.</p>		

ATIS ★ 109.8 273.5	FORT WORTH CENTER 133.5 350.35	APP CON 125.1 353.7	TOWER ★ 119.65 254.4	GND CON 121.85 275.8	CLNC DEL 120.65 284.7
------------------------------	--	-------------------------------	--------------------------------	--------------------------------	---------------------------------

*** When ALS inop, increase CAT AB RVR to 55, vis to 1 mile; CAT CDE vis to 1 3/8 miles.
**** Circling not authorized W of Rwy 18R-36L.

ATC radar required for holding above 4000



CATEGORY	A	B	C	D	E
S-ILS 36L*	1554/24		200	(200-1/2)	
S-LOC 36L**	1680/24	326 (300-1/2)	1680/26	326	(300-1/2)
CIRCLING	1780-1 398 (400-1)	1840-1 458 (500-1)	1880-1 1/2 498 (500-1 1/2)	2080-2 1/4 698 (700-2 1/4)	2180-2 3/4 798 (800-2 3/4)
WITHOUT LAST STEPDOWN FIX					
S-LOC 36L***	1800/24	446 (500-1/2)	1800/45	446	(500-3/4)
CIRCLING	1800-1 418 (500-1)	1840-1 458 (500-1)	1880-1 1/2 498 (500-1 1/2)	2080-2 1/4 698 (700-2 1/4)	2180-2 3/4 798 (800-2 3/4)

HIRL all Rwys	FAF to MAP 4.6 NM					
	Knots	60	90	120	150	180
	Min:Sec	4:36	3:04	2:18	1:50	1:32

ALTUS, OKLAHOMA

34°40'N-99°16'W

ALTUS AFB (KLTS)

Amdt 3 14JUL22

ILS Z or LOC RWY 36L

SC-1, 16 MAY 2024 TO 13 JUN 2024

SC-1, 16 MAY 2024 TO 13 JUN 2024