

WAAS CH 63006 W11A	APP CRS 113°	Rwy Idg TDZE Apt Elev	5400 644 660
--	------------------------	-----------------------------	---

RNAV (GPS) RWY 11

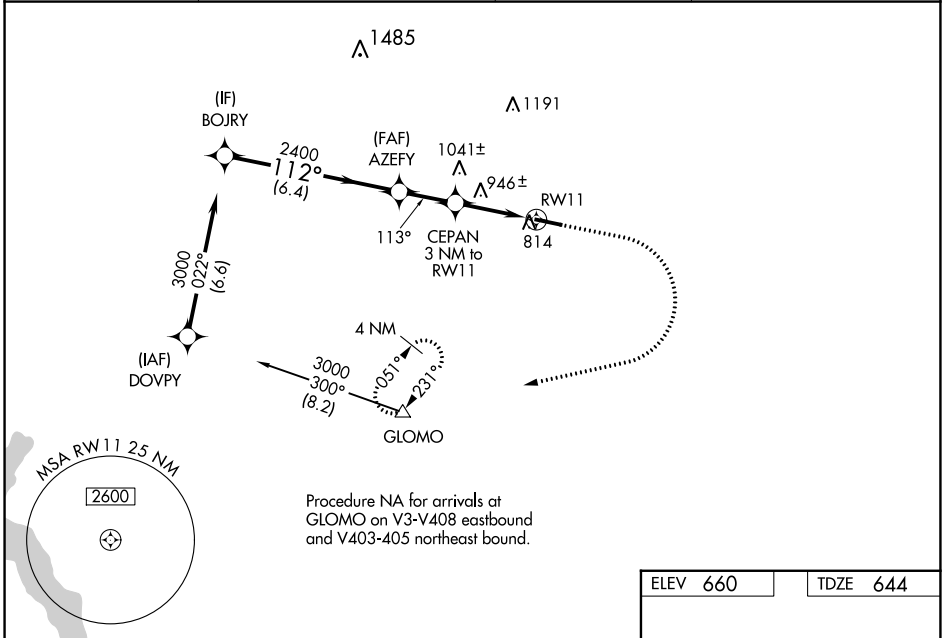
CHESTER COUNTY G O CARLSON (MQS)

RNP APCH - GPS.

⚠ Helicopter visibility reduction below 3/4 SM NA. For uncompensated Baro-VNAV systems, LNAV/VNAV NA below -16°C or above 54°C.

MISSED APPROACH: Climb to 1300 then climbing right turn to 3000 direct GLOMO and hold, continue climb-in-hold to 3000.

AWOS-3 126.25	PHILADELPHIA APP CON 124.35 319.15	CLNC DEL 125.6	UNICOM 122.7 (CTAF) 0
-------------------------	--	--------------------------	---------------------------------



NE-4, 16 MAY 2024 to 13 JUN 2024

NE-4, 16 MAY 2024 to 13 JUN 2024

VGSi and RNAV glidepath not coincident (VGSi Angle 3.00/TCH 52).		1300	3000	GLOMO
BOJRY	AZEFY	CEPAN	GLOMO	
3000	2400	1700	△	
GP 3.20°				
TCH 55				
	6.4 NM	2.1 NM	1.4	1.6
CATEGORY	A	B	C	D
LPV DA	973-1		329 (400-1)	
LNAV/VNAV DA	1091-1 3/8		447 (500-1 3/8)	
LNAV MDA	1200-1	556 (600-1)	1200-1 3/8	556 (600-1 3/8)
CIRCLING	1200-1 540 (600-1)	1240-1 580 (600-1)	1260-1 3/8 600 (600-1 3/8)	1420-2 1/2 760 (800-2 1/2)

ELEV 660	TDZE 644
----------	----------

HIRL Rwy 11-29 0
REIL Rws 11 and 29 0