

RNAV (GPS) RWY 4

ORANGE COUNTY (MGJ)

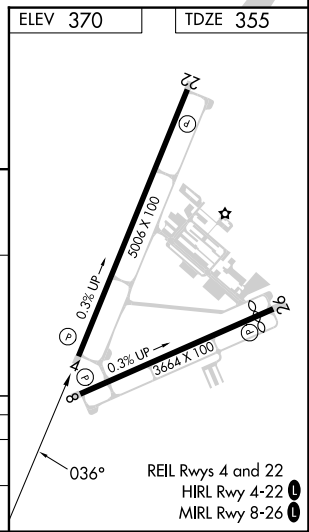
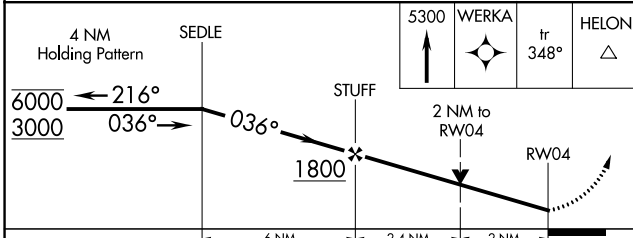
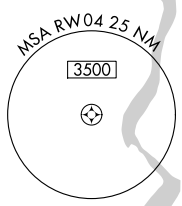
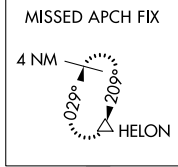
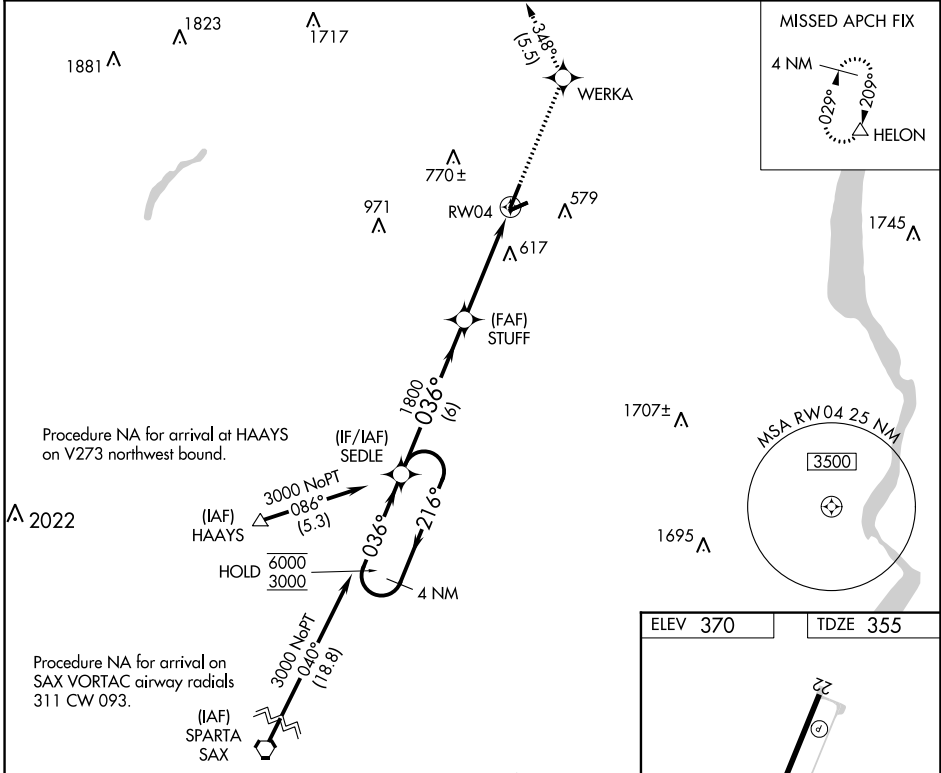
APP CRS 036°	Rwy Idg 5006
	TDZE 355
	Apt Elev 370

RNP APCH.

⚠ Circling Rwy 8, 22, 26 NA at night. Rwy 4 helicopter visibility reduction below 3/4 SM NA.

MISSED APPROACH: Climb to 5300 direct WERKA and on track 348° to HELON and hold. continue climb-in-hold to 5300.

ASOS 119.275	NEW YORK APP CON 132.75 363.1	CLNC DEL 123.85	UNICOM 122.725 (CTAF) 0
------------------------	---	---------------------------	-----------------------------------



CATEGORY	A	B	C	D
LNVA MDA	1060-1	705 (700-1)	1060-2	705 (700-2)
C CIRCLING	1180-1	810 (900-1)	1180-2 1/4 810 (900-2 1/4)	1220-2 3/4 850 (900-2 3/4)

NE-2, 16 MAY 2024 to 13 JUN 2024

NE-2, 16 MAY 2024 to 13 JUN 2024