

VOR/DME HVR 114.65 Chan 93(Y)	APP CRS 094°	Rwy Idg TDZE 5205 2585 Apt Elev 2591
--	------------------------	---

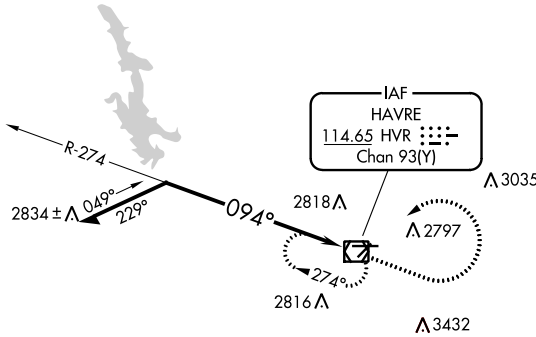
VOR RWY 8

HAVRE CITY-COUNTY (HVR)

MISSED APPROACH: Climb to 3500 then climbing left turn to 8000 direct HVR VOR/DME and hold, continue climb-in-hold to 8000.

ASOS 135.225	SALT LAKE CENTER 133.4 285.4	UNICOM 122.8 (CTAF)
------------------------	--	-------------------------------

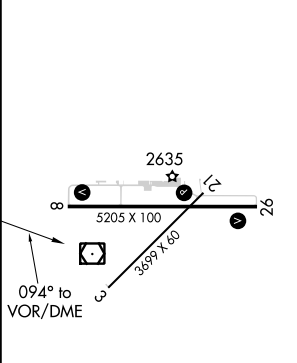
△ 3508



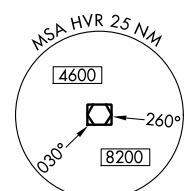
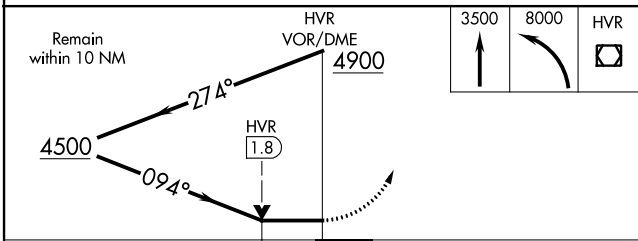
NW-1, 16 MAY 2024 to 13 JUN 2024

NW-1, 16 MAY 2024 to 13 JUN 2024

ELEV 2591	D	TDZE 2585
-----------	----------	-----------



- REIL Rws 8 and 26
- MIRL Rwy 8-26
- MIRL Rwy 3-21



CATEGORY	A	B	C	D
S-8	3140-1	555 (600-1)	3140-1 ⁵ / ₈	555 (600-1 ⁵ / ₈)
CIRCLING	3140-1	549 (600-1)	3360-2 ¹ / ₄ 769 (800-2 ¹ / ₄)	3740-3 1149 (1200-3)