

WAAS CH <b>65743</b> <b>W12A</b>	APP CRS <b>123°</b>	Rwy Idg TDZE Apt Elev	<b>4391</b> <b>20</b> <b>20</b>
--	------------------------	-----------------------------	---------------------------------------

# RNAV (GPS) RWY 12

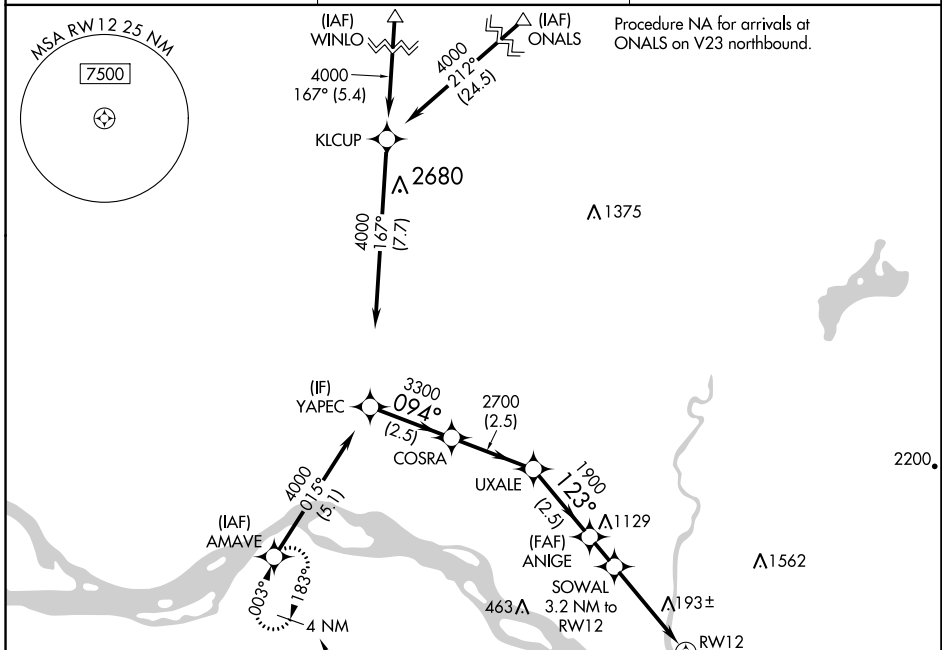
SOUTHWEST WASHINGTON RGNL (KLS)

RNP APCH.

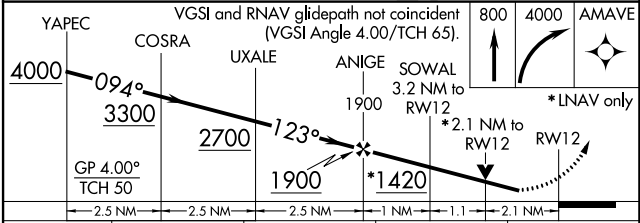
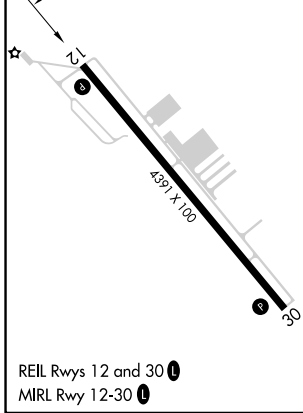
**▼** Circling NA northeast of Rwy 12-30. Circling Rwy 30 NA at night. Rwy 12 helicopter visibility reduction below 3/4 SM NA. For uncompensated Baro-VNAV systems, LNAV/VNAV NA below -6°C or above 54°C.

**MISSED APPROACH:** Climb to 800 then climbing right turn to 4000 direct AMAVE and hold, continue climb-in-hold to 4000.

AWOS-3PT <b>135.075</b>	SEATTLE CENTER <b>124.2 317.6</b>	UNICOM <b>122.725 (CTAF) 0</b>
----------------------------	--------------------------------------	-----------------------------------



ELEV 20	TDZE 20
---------	---------



CATEGORY	A	B	C	D
LPV DA	608-1 <sup>3</sup> / <sub>4</sub>	588 (600-1 <sup>3</sup> / <sub>4</sub> )		NA
LNAV/VNAV DA	766-2	746 (800-2)		NA
LNAV MDA	980-1 <sup>1</sup> / <sub>4</sub> 960 (1000-1 <sup>1</sup> / <sub>4</sub> )	980-1 <sup>1</sup> / <sub>2</sub> 960 (1000-1 <sup>1</sup> / <sub>2</sub> )		NA
<b>C</b> CIRCLING	980-1 <sup>1</sup> / <sub>4</sub> 960 (1000-1 <sup>1</sup> / <sub>4</sub> )	980-1 <sup>1</sup> / <sub>2</sub> 960 (1000-1 <sup>1</sup> / <sub>2</sub> )		NA

NW-1, 16 MAY 2024 to 13 JUN 2024

NW-1, 16 MAY 2024 to 13 JUN 2024