

APP CRS	Rwy ldg TDZE	N/A
166°	Apt Elev	7838

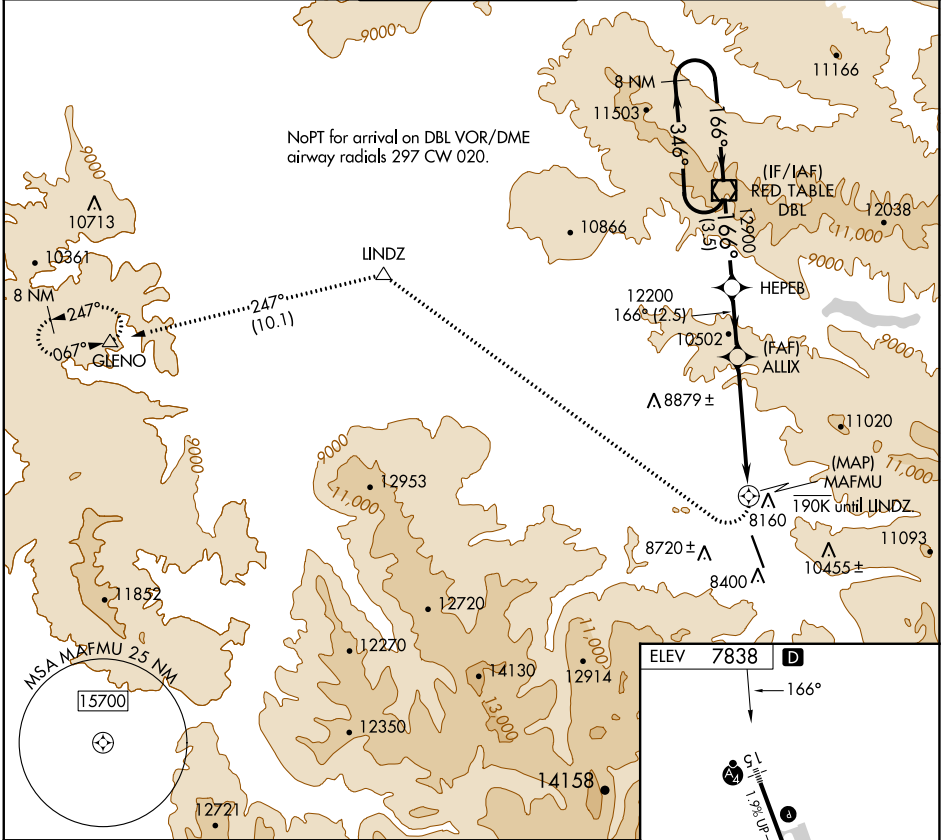
# RNAV (GPS)-F

ASPEN-PITKIN COUNTY/SARDY FLD (A5E)

**⚠** When local altimeter setting not received, procedure NA.  
**⚠** DME/DME RNP-0.3 NA. Visibility reduction by helicopters NA.  
**⚠** Procedure NA at night. Circling NA for Cat C southwest of Rwy 15-33.

**MISSED APPROACH:** Climbing right turn to 14000 direct LINDZ and on track 247° to GLENO and hold.

ATIS <b>120.4</b>	ASPEN APP CON * <b>123.8 288.3</b>	ASPEN TOWER * <b>118.85 (CTAF) 0 288.3</b>	GND CON <b>121.9</b>	CLNC DEL <b>123.75</b>	UNICOM <b>122.95</b>
----------------------	---------------------------------------	---	-------------------------	---------------------------	-------------------------



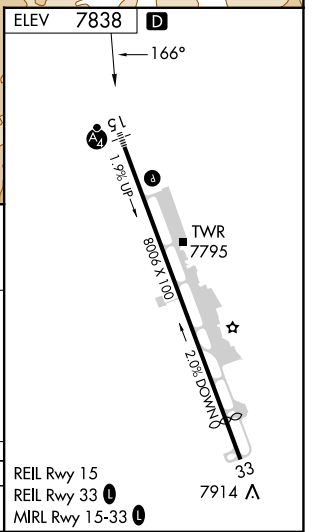
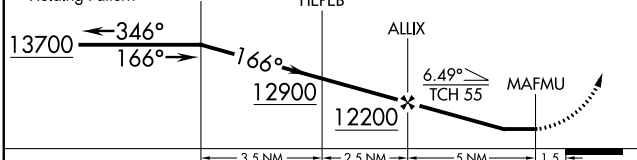
SW-1, 16 MAY 2024 to 13 JUN 2024

SW-1, 16 MAY 2024 to 13 JUN 2024

VGSI and descent angles not coincident (VGSI Angle 3.50/TCH 55).

14000	LINDZ	tr 247°	GLENO
	△		△

8 NM Holding Pattern DBL VOR/DME HEPER



CATEGORY	A	B	C	D
CIRCLING	10200-1¼ 2362 (2400-1¼)	10220-1¾ 2382 (2400-1¾)	10960-3 3122 (3200-3)	NA

# RNAV (GPS)-F