

APP CRS	Rwy Idg	7399
165°	TDZE	4708
	Apt Elev	4724

RNAV (GPS) RWY 16

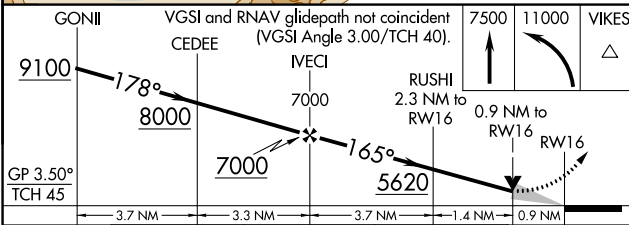
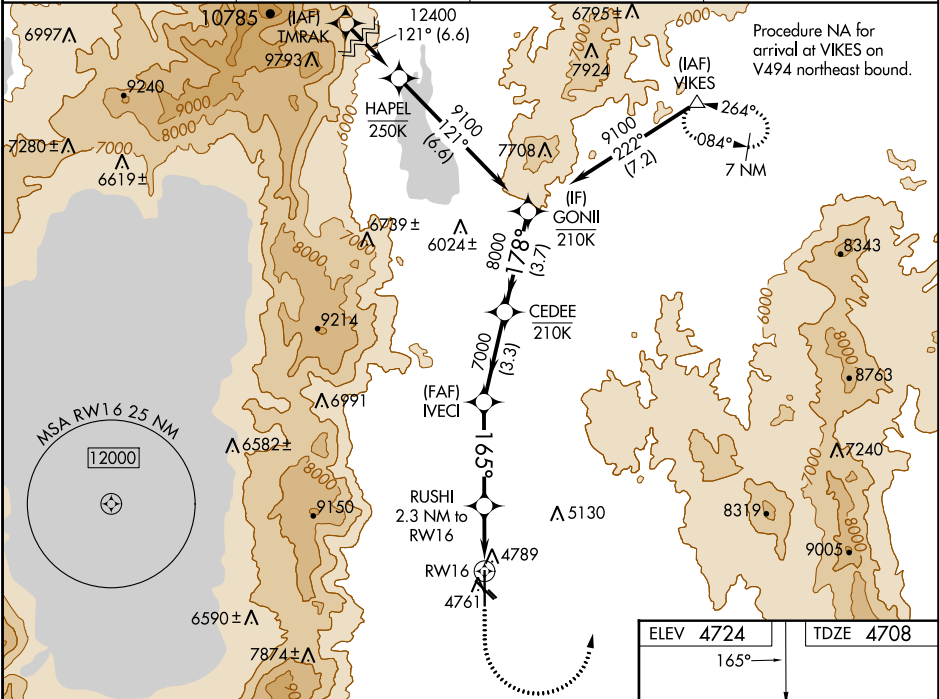
MINDEN-TAHOE (MEV)

RNP APCH - GPS.

Baro-VNAV NA. Circling NA for Cat D southwest of Rwy 12 and west of Rwy 34. Circling NA to Rwy 12G and 30G.

MISSED APPROACH: (Do not exceed 210K until VIKES) Climb to 7500, then climbing left turn to 11000 direct VIKES and hold, continue climb-in-hold to 11000.
 *Missed approach requires minimum climb of 245 feet per NM to 9200.
 #Missed approach requires minimum climb of 310 feet per NM to 9400.

AWOS-3PT 119.325	NORCAL APP CON 119.2 279.55	CLNC DEL 133.25	UNICOM 123.05 (CTAF)
----------------------------	---------------------------------------	---------------------------	--------------------------------



CATEGORY	A	B	C	D
LNAV/VNAV DA*	5106-1½ 398 (400-1½)			
LNAV/VNAV DA	6174-5 1466 (1500-5)			
LNAV MDA#	5040-1 332 (400-1)			
LNAV MDA	5600-1¼ 892 (900-1¼)	6020-3 1312 (1300-3)		
CIRCLING	5600-1¼ 876 (900-1¼)	6020-3 1296 (1300-3)	6440-3 1716 (1800-3)	

