

LOC/DME I-ABI 110.3 Chan 40	APP CRS 355°	Rwy Idg 7198 TDZE 1776 Apt Elev 1791
---	------------------------	---

ILS or LOC RWY 35R

ABILENE RGNL (ABI)

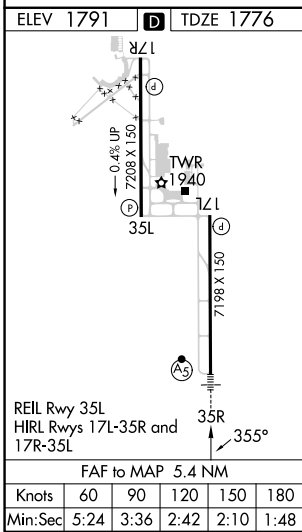
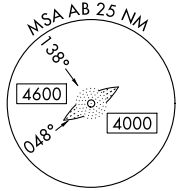
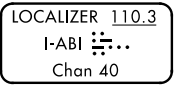
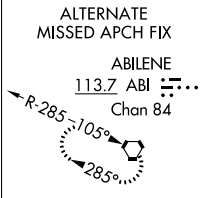
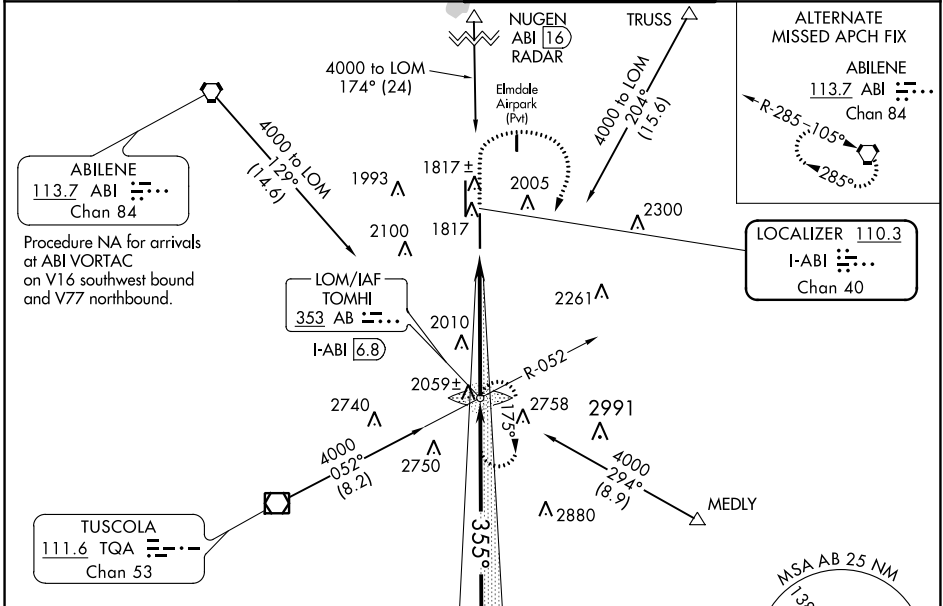
ADF required. RADAR required for procedure entry at NUGEN.

▼ For inop ALS, increase S-ILS 35R Cat E visibility to RVR 4000, and S-LOC 35R Cat C/D/E visibility to 1 3/4 SM.
▲ ** RVR 1800 authorized with use of FD or AP or HUD to DA.

MALSRL
AS

MISSED APPROACH: Climb to 3300 then climbing right turn to 4000 direct TOMHI LOM/INT/I-ABI 6.8 DME and hold.

ATIS 118.25	ABILENE APP CON 125.0 336.3 (EAST) 127.2 282.3 (WEST)	ABILENE TOWER 120.1 257.8	GND CON 121.7 348.6
-----------------------	---	-------------------------------------	-------------------------------



3300	4000	TOMHI	TOMHI LOM/INT I-ABI 6.8	Remain within 15 NM		
*LOC only.				GS 3.00° TCH 58		
CATEGORY		A	B	C	D	E
S-ILS 35R**		1976/24		200 (200-1/2)		
S-LOC 35R		2260/24	484 (500-1/2)	2260/50 484 (500-1)		
CIRCLING	2300-1	2320-1	2420-1 3/4	2460-2	2620-3	
	509 (600-1)	529 (600-1)	629 (700-1 3/4)	669 (700-2)	829 (900-3)	

SC-2, 11 JUL 2024 to 08 AUG 2024

SC-2, 11 JUL 2024 to 08 AUG 2024