

APCH CRS 338°	Rwy Idg 12,134
	TDZE 4058
	Arpt Elev 4093

AL-7 (USAF)

HOLLOMAN AFB (KHMN)

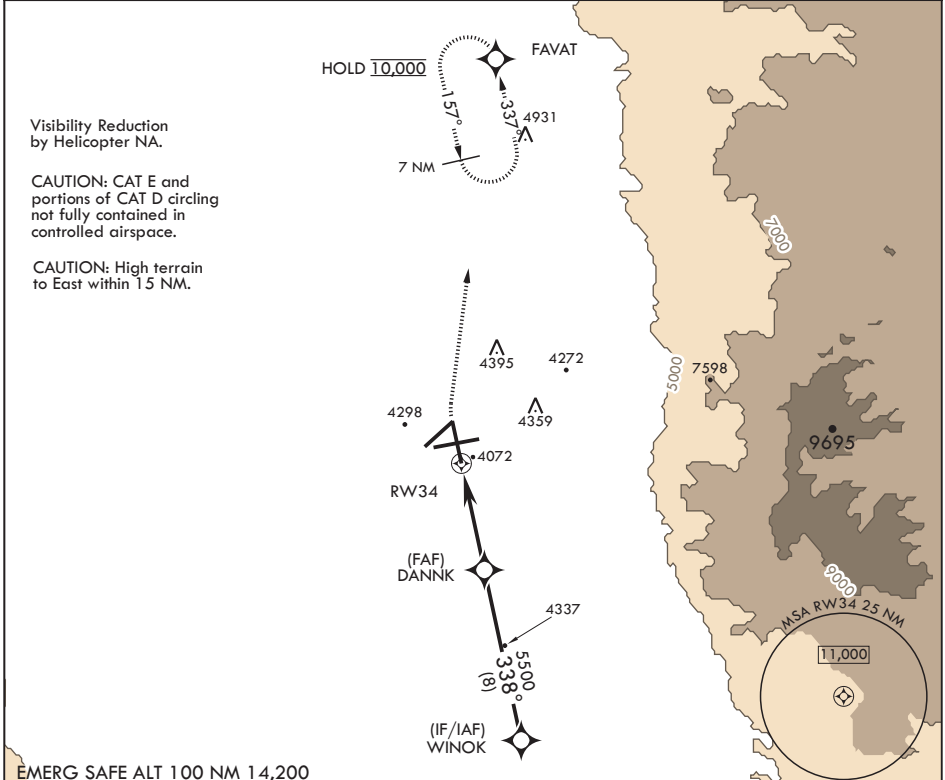
RNP APCH. DME/DME RNP-0.3 NA.

MISSED APPROACH: Climb to 4800 then climbing right turn to 10,000 direct FAVAT and hold, continue climb-in-hold to 10,000.

GPS required

▼ * When circling to Rwy 25 at night, operational VGSI required, remain on or above VGSI glidepath until threshold.

ATIS ★ 273.5	ALBUQUERQUE CENTER 132.65 257.6	APP CON 120.6 269.225	TOWER ★ 119.3 254.4	GND CON 127.05 275.8	CLNC DEL 126.7 289.4
------------------------	---	---------------------------------	-------------------------------	--------------------------------	--------------------------------



Visibility Reduction by Helicopter NA.

CAUTION: CAT E and portions of CAT D circling not fully contained in controlled airspace.

CAUTION: High terrain to East within 15 NM.

SW-1, 11 JUL 2024 to 08 AUG 2024

SW-1, 11 JUL 2024 to 08 AUG 2024

