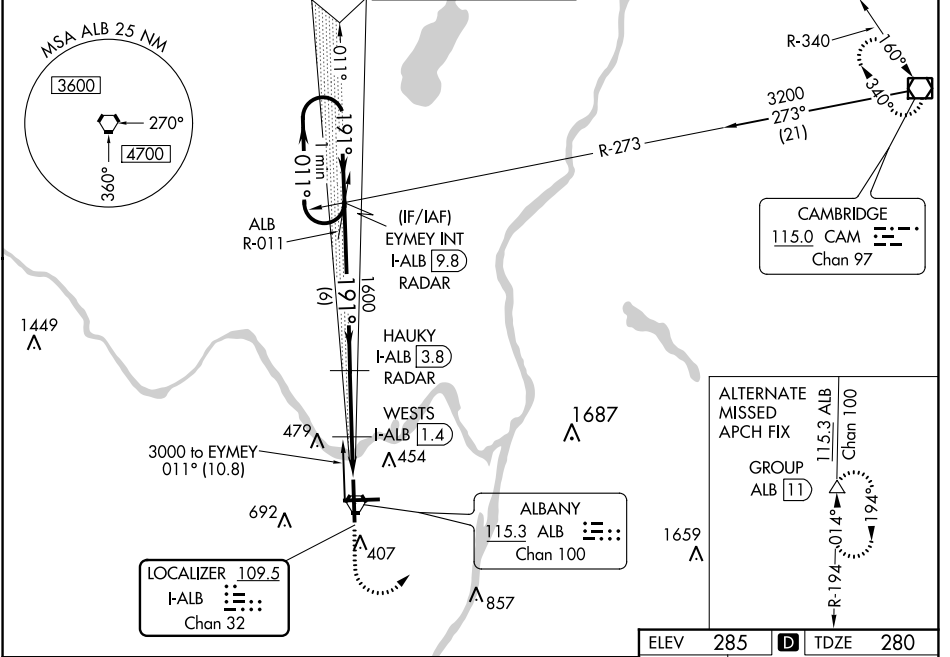


LOC/DME I-ALB 109.5 Chan 32	APP CRS 191°	Rwy Idg TDZE Apt Elev	8500 280 285
--	------------------------	-----------------------------	---

ILS or LOC RWY 19

ALBANY INTL (ALB)

<p>Circling NA west of Rwy 1-19. Circling Rwy 10 NA at night. DME or RADAR required.</p>	<p>MALS/R</p>	<p>MISSED APPROACH: Climb to 2000 then climbing left turn to 5000 direct CAM VOR/DME and hold.</p>		
		D-ATIS 120.45	ALBANY APP CON 132.825 307.2	ALBANY TOWER 119.5 257.8



NE-2, 11 JUL 2024 to 08 AUG 2024

NE-2, 11 JUL 2024 to 08 AUG 2024

One Minute Holding Pattern		EYMEY INT I-ALB [9.8] RADAR	HAUKY I-ALB [3.8] RADAR	WESTS I-ALB [1.4]	ALBANY 115.3 ALB Chan 100	ELEV 285	TDZE 280
<p>2000 ← 011° → 191°</p> <p>GS 3.00° TCH 54 Use I-ALB DME when on the localizer course.</p>		1600	1600	*I-ALB [0.7]			
<p>6 NM 2.4 NM 0.7 NM 0.9 NM</p>		<p>*LOC only.</p>		<p>TDZ/CL Rwy 1 HIRL Rwy 1-19 MIRL Rwy 10-28 REIL Rwys 10 and 28</p>			
CATEGORY	A	B	C	D	FAF to MAP 4 NM		
S-ILS 19	480/18 200 (200-½)				Knots 60 90 120 150 180		
S-LOC 19	820/24	540 (600-½)	820/55	540 (600-1)	Min:Sec 4:00 2:40 2:00 1:36 1:20		
CIRCLING	820-1	535 (600-1)	860-1½	960-2¼			
WESTS FIX MINIMUMS							
S-LOC 19	620/24	340 (400-½)	620/26	340 (400-½)			
CIRCLING	820-1	535 (600-1)	820-1½	960-2¼			