

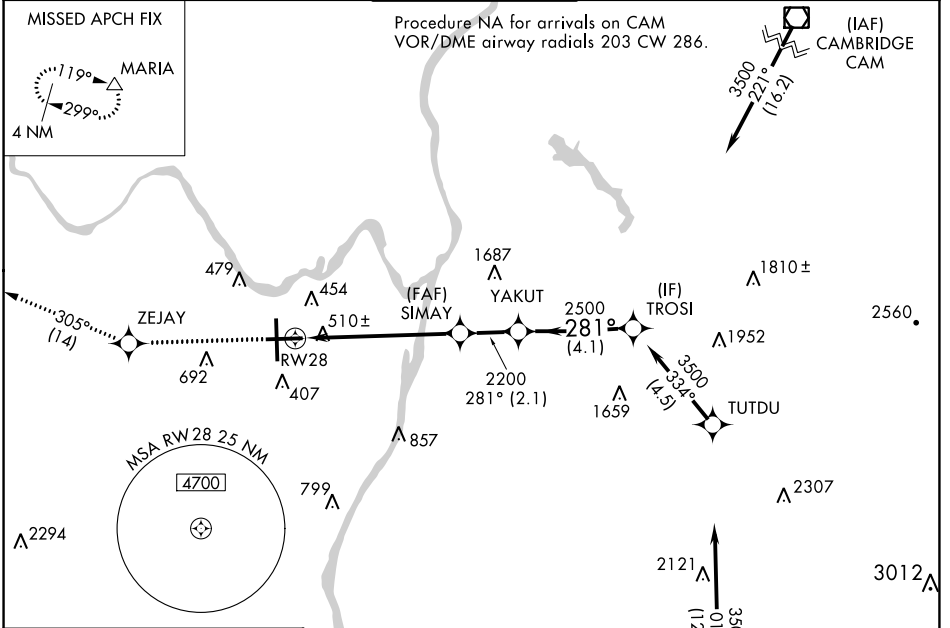
WAAS CH 78124 W28A	APP CRS 281°	Rwy Idg TDZE Apt Elev	6007 285 285
--	------------------------	-----------------------------	---

RNAV (GPS) RWY 28

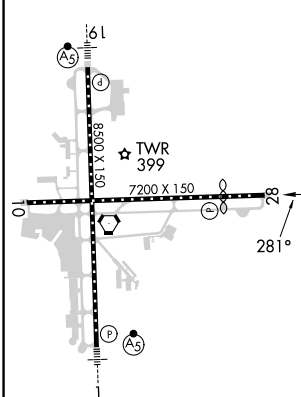
ALBANY INTL (ALB)

RNP APCH - GPS.		MISSED APPROACH: Climb to 3500 direct ZEJAY and on track 305° to MARIA and hold.	
<p>▼ For uncompensated Baro-VNAV systems, LNAV/VNAV NA below -18°C or above 42°C. Circling NA west of Rwy 1-19. Circling Rwy 10 NA at night. When VGSI inop, procedure NA at night. Rwy 28 helicopter visibility reduction below 1 SM NA.</p>			

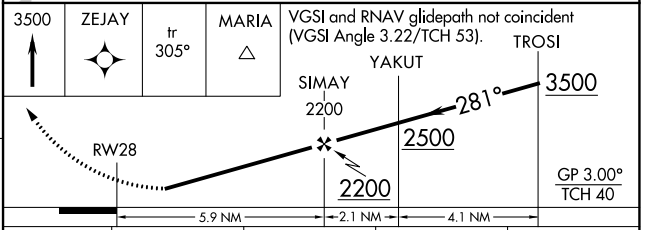
D-ATIS 120.45	ALBANY APP CON 132.825 307.2	ALBANY TOWER 119.5 257.8	GND CON 121.7 348.6	CLNC DEL 127.50
-------------------------	--	------------------------------------	-------------------------------	---------------------------



ELEV 285	D	TDZE 285
----------	----------	----------



Procedure NA for arrivals at CANAN on V487 southwest bound and V130 southeast bound.



CATEGORY	A	B	C	D
LPV DA	783-1 ³ / ₄ 498 (500-1 ³ / ₄)			
LNAV/VNAV DA	825-1 ⁷ / ₈ 540 (600-1 ⁷ / ₈)			
LNAV MDA	780-1	495 (500-1)	780-1 ³ / ₈	495 (500-1 ³ / ₈)
C CIRCLING	820-1	535 (600-1)	860-1 ¹ / ₂ 575 (600-1 ¹ / ₂)	960-2 ¹ / ₄ 675 (700-2 ¹ / ₄)

TDZ/CL Rwy 1
HIRL Rwy 1-19
MIRL Rwy 10-28
REIL Rwy 10 and 28

NE-2, 11 JUL 2024 to 08 AUG 2024

NE-2, 11 JUL 2024 to 08 AUG 2024