

HI-TACAN RWY 8

VORTAC ABQ 113.2 Chan 79	APCH CRS 077°	Rwy ldg 12,793	TDZE 5320
		Arprt Elev 5355	

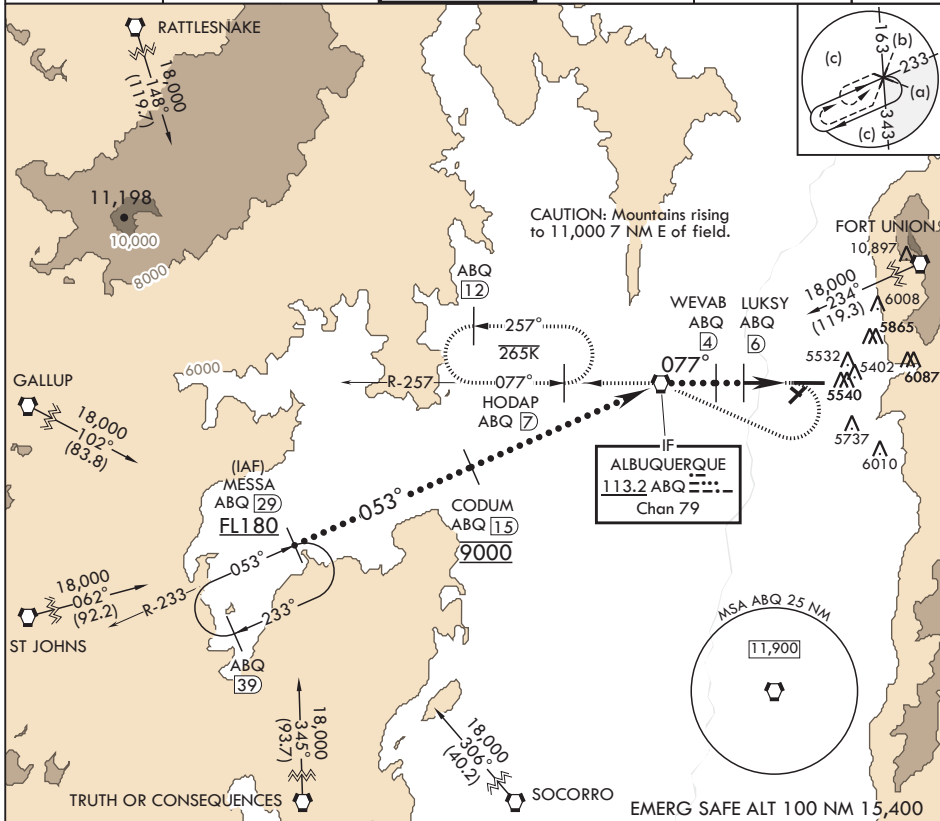
JAL-12 (USAF)

ALBUQUERQUE INTL SUNPORT (KABQ)

⚠ * When ALS inop, increase CAT CDE RVR to 55, vis to 1 1/8 miles.
 ** Circling NA for CAT E SE of Rwy 3-21 and NE of Rwy 12-30.
 When local altimeter is not received, procedure NA.

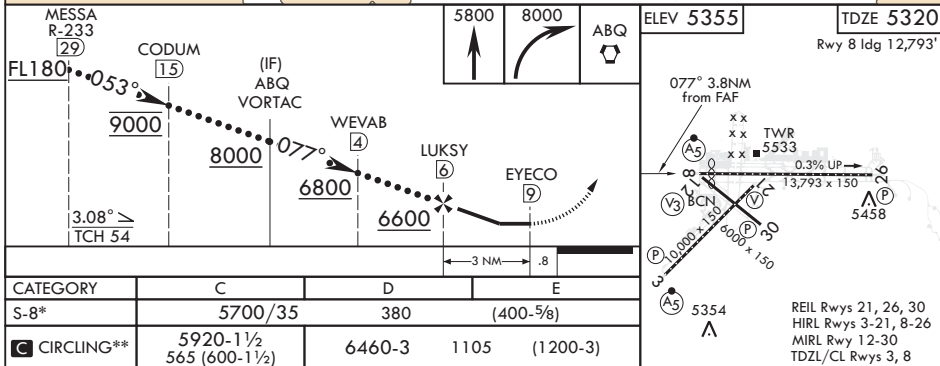
MALSRS MISSED APPROACH: Climb to 5800 then climbing right turn to 8000 direct ABQ VORTAC R-257 to HODAP/ABQ 7 DME and hold.

D ATIS 118.0 257.7	APP CON/DEP CON 123.9 253.5	TOWER 120.3 351.9	GND CON 121.9 348.6	CLNC DEL 119.2 259.3	ASR
-----------------------	--------------------------------	----------------------	------------------------	-------------------------	-----



SW-1, 11 JUL 2024 to 08 AUG 2024

SW-1, 11 JUL 2024 to 08 AUG 2024



HI-TACAN RWY 8