

**TOP ALTITUDE:
FL200**

TAKEOFF MINIMUMS

Rwy 3: Standard with minimum climb of 500' per NM to 9000.
Minimum obstacle climb gradient after YUGLU is 420' per NM to 11900.

Rwy 8: Standard with minimum climb of 515' per NM to 9000.
Minimum obstacle climb gradient after YUGLU is 420' per NM to 11900.

NOTE: Takeoff Rwy 3, do not exceed 220K until passing 6000.

NOTE: Takeoff Rwy 8, do not exceed 220K until passing 5860.

NOTE: Do not exceed 250K until passing MNZNO.

NOTE: DME/DME/IRU or GPS required.

NOTE: For turbojet aircraft only.

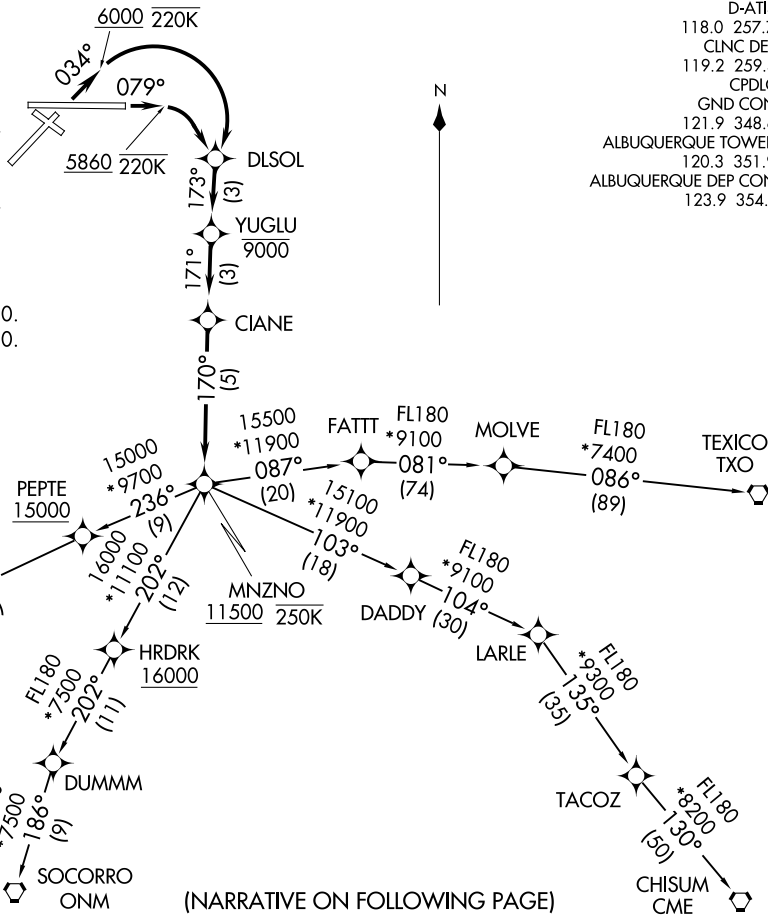
NOTE: RNAV 1.

NOTE: RADAR required.

NOTE: If unable to accept climb gradient, advise ATC on initial contact.

NOTE: For non-GPS equipped aircraft ONM DME must be operational.

NOTE: Chart not to scale.



D-ATIS
118.0 257.7
CLNC DEL
119.2 259.3
CPDLC
GND CON
121.9 348.6
ALBUQUERQUE TOWER
120.3 351.9
ALBUQUERQUE DEP CON
123.9 354.1

(NARRATIVE ON FOLLOWING PAGE)

MNZN0 THREE DEPARTURE (RNAV)
(MNZN03.MNZN0) 25JUN15

ALBUQUERQUE, NEW MEXICO
ALBUQUERQUE INTL SUNPORT (ABQ)

(MNZN03.MNZN0) 21336
MNZN0 THREE DEPARTURE (RNAV)
AL-12 (FAA)

ALBUQUERQUE INTL SUNPORT (ABQ)
ALBUQUERQUE, NEW MEXICO



DEPARTURE ROUTE DESCRIPTION

TAKEOFF RUNWAY 3: Climb heading 034° to 6000, then right turn direct DLSOL, then on track 173° to YUGLU, cross YUGLU at or below 9000, then on depicted route to MNZNO, cross MNZNO at or above 11500. Thence

TAKEOFF RUNWAY 8: Climb heading 079° to 5860, then right turn direct DLSOL, then on track 173° to YUGLU, cross YUGLU at or below 9000, then on depicted route to MNZNO, cross MNZNO at or above 11500. Thence

. . . . (transition). Maintain FL200, expect filed altitude ten minutes after departure.

CHISUM TRANSITION (MNZNO3.CME)

LAMSE TRANSITION (MNZNO3.LAMSE)

MOLVE TRANSITION (MNZNO3.MOLVE)

SOCORRO TRANSITION (MNZNO3.ONM)

ST JOHNS TRANSITION (MNZNO3.SJN)

TEXICO TRANSITION (MNZNO3.TXO)

SW-1, 11 JUL 2024 to 08 AUG 2024

SW-1, 11 JUL 2024 to 08 AUG 2024