

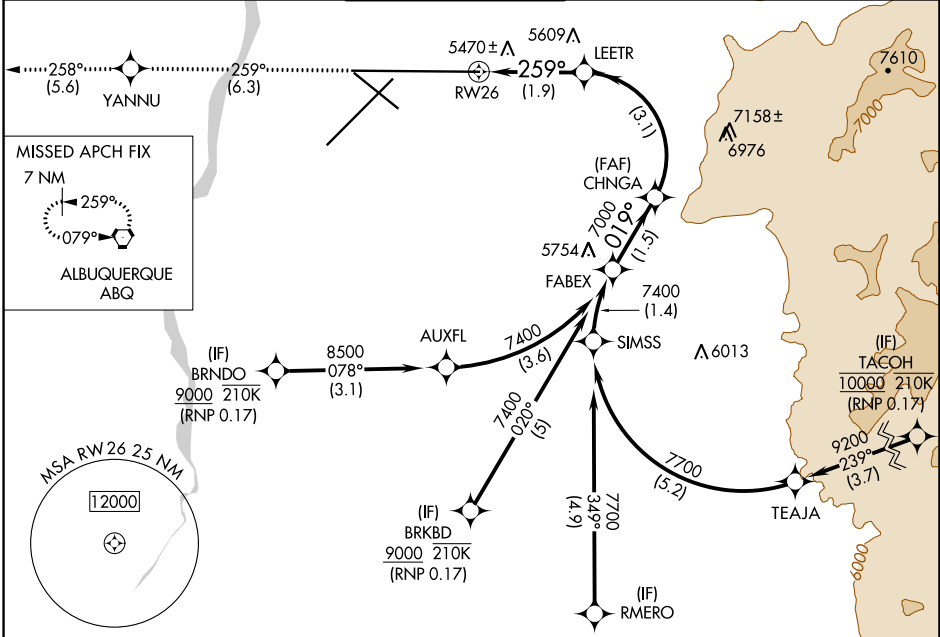
APP CRS	Rwy Idg	13793
259°	TDZE	5355
	Apt Elev	5355

RNAV (RNP) Z RWY 26

ALBUQUERQUE INTL SUNPORT (ABQ)

RNP AR APCH, RF required.		MISSED APPROACH: Climb to 8000 on track 259° to YANNU and on track 258° to ABQ VORTAC and hold.			
For uncompensated Baro-VNAV systems, procedure NA ASR below -13°C or above 48°C.					

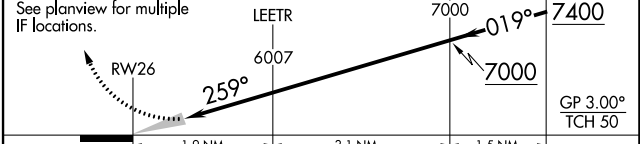
D-ATIS	ALBUQUERQUE APP CON	ALBUQUERQUE TOWER	GND CON	CLNC DEL	CPDLC
118.0 257.7	123.9 354.1	120.3 351.9	121.9 348.6	119.2 259.3	



ELEV 5355	D	TDZE 5355
-----------	----------	-----------



8000	YANNU	tr 258°	ABQ	VGSI and RNAV glidepath not coincident (VGSI Angle 3.00/TCH 83).	FABEX
tr 259°				CHNGA	



CATEGORY	A	B	C	D
RNP 0.17 DA	5745-1¼ 390 (400-1¼)			

AUTHORIZATION REQUIRED

SW-1, 11 JUL 2024 to 08 AUG 2024

SW-1, 11 JUL 2024 to 08 AUG 2024