

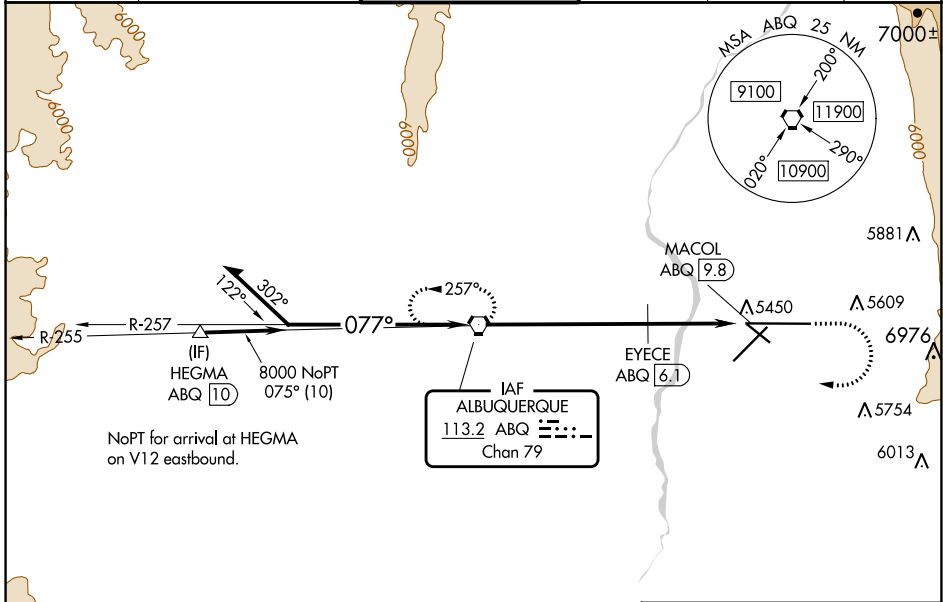
VORTAC ABQ 113.2 Chan 79	APP CRS 077°	Rwy Idg 12793 TDZE 5320 Apt Elev 5355
---------------------------------------	------------------------	--

VOR RWY 8

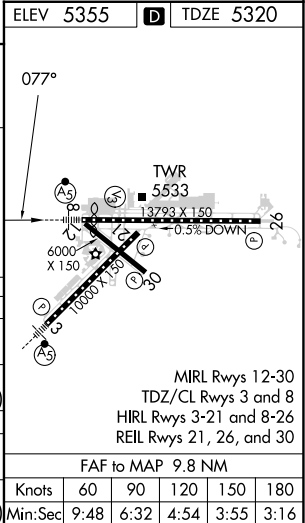
ALBUQUERQUE INTL SUNPORT (ABQ)

	EYECE FIX MINIMUMS: For inop ALS, increase S-8 Cat C/D/E visibility to RVR 5500. For inop ALS, increase S-8 Cat E visibility to 3 SM. Circling Cat E N/A southeast of Rwy 3-21 and northeast of Rwy 12-30.	MALSR 	MISSED APPROACH: Climb to 5800 then climbing right turn to 8000 direct ABQ VORTAC and hold.

D-ATIS 118.0 257.7	ALBUQUERQUE APP CON 123.9 354.1	ALBUQUERQUE TOWER 120.3 351.9	GND CON 121.9 348.6	CLNC DEL 119.2 259.3	CPDLC
------------------------------	---	---	-------------------------------	--------------------------------	-------



ELEV 5355 TDZE 5320					
Remain within 15 NM 8200, 257°, 077°, 8000, 6380, 5800, 8000, ABQ VORTAC, EYECE ABQ 6.1, ABQ 8.7, MACOL ABQ 9.8 6.1 NM, 2.6 NM, 1.1 NM					
CATEGORY	A	B	C	D	E
S-8	6380/40 1060 (1100-3/4)	6380/55 1060 (1100-1)	6380-2 1/2 1060 (1100-2 1/2)		
CIRCLING	6380-1 1/4 1025 (1100-1 1/4)	6380-1 1/2 1025 (1100-1 1/2)	6380-3 11025 (1100-3)	6460-3 1105 (1200-3)	7460-3 2105 (2200-3)
EYECE FIX MINIMUMS					
S-8	5700/24	380 (400-1/2)	5700/40 380 (400-3/4)		
CIRCLING	5840-1 485 (500-1)	5920-1 565 (600-1)	5940-1 1/2 585 (600-1 1/2)	6460-3 1105 (1200-3)	7460-3 2105 (2200-3)



SW-1, 11 JUL 2024 to 08 AUG 2024

SW-1, 11 JUL 2024 to 08 AUG 2024