

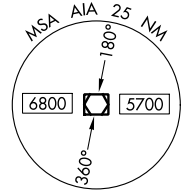
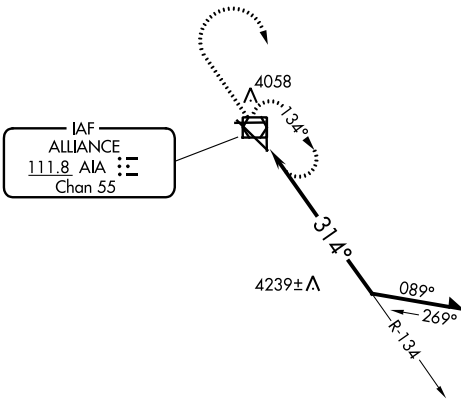
VOR/DME AIA 111.8 Chan 55	APP CRS 314°	Rwy Idg 9202 TDZE 3927 Apt Elev 3931
---	------------------------	---

VOR RWY 30

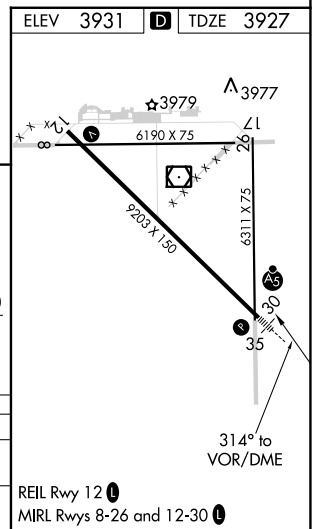
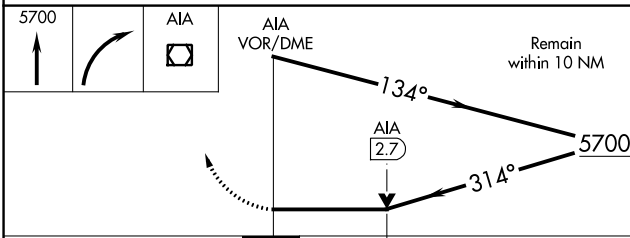
ALLIANCE MUNI (AIA)

▲ For inop ALS, increase S-30 Cats A/B visibility to 1 SM and S-30 Cats C/D visibility to 1 1/4 SM.	MALSR 	MISSED APPROACH: Climb to 5700 then right turn direct AIA VOR/DME and hold.

ASOS 135.075	DENVER CENTER 127.95 338.2	UNICOM 123.0 (CTAF) 1
------------------------	--------------------------------------	---------------------------------



▲ 5749



CATEGORY	A	B	C	D
S-30	4540-3/4 613 (700-3/4)		4540-1 1/8 613 (700-1 1/8)	4540-1 1/2 613 (700-1 1/2)
CIRCLING	4540-1 609 (700-1)		4580-1 3/4 649 (700-1 3/4)	4640-2 1/4 709 (800-2 1/4)

REIL Rwy 12 **1**
MIRL Rwy 8-26 and 12-30 **1**

NC-2, 11 JUL 2024 to 08 AUG 2024

NC-2, 11 JUL 2024 to 08 AUG 2024