

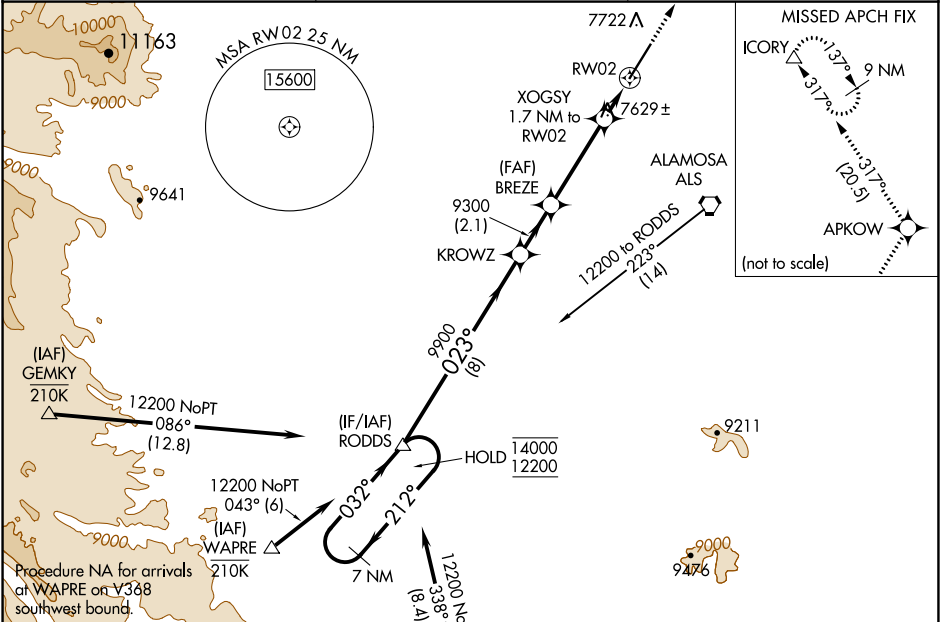
WAAS CH <b>90410</b> <b>W02A</b>	APP CRS <b>023°</b>	Rwy Idg TDZE <b>7540</b> Apt Elev <b>7540</b>
--	------------------------	---

# RNAV (GPS) RWY 2

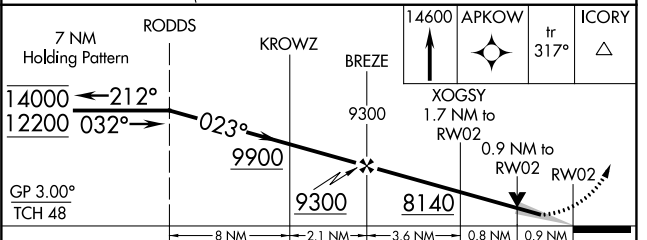
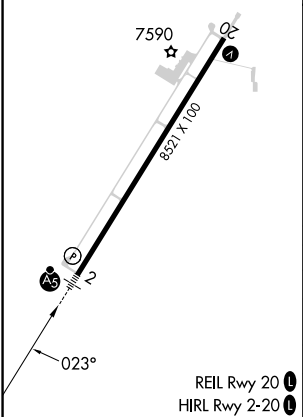
SAN LUIS VALLEY RGNL/BERGMAN FLD (ALS)

RNP APCH-GPS. ▼ For uncompensated Baro-VNAV systems, LNAV/VNAV NA below -31°C or above 54°C. For inop ALS, increase LNAV/VNAV all Cats visibility to ¾ SM. ⚠ -26°C	MALSR AS	MISSED APPROACH: Climb to 14600 direct APKOW and on track 317° to ICORY and hold, continue climb-in-hold to 14600.
--	-------------	--

ASOS <b>135.175</b>	DENVER CENTER <b>128.375 379.95</b>	UNICOM <b>122.8 (CTAF) 0</b>
------------------------	--	---------------------------------



ELEV 7540	<b>D</b>	TDZE 7540
-----------	----------	-----------



CATEGORY	A	B	C	D
LPV DA		7740-½	200 (200-½)	
LNAV/VNAV DA		7790-½	250 (300-½)	
LNAV MDA		7880-½	340 (400-½)	
<b>CIRCLING</b>	8040-1	500 (500-1)	8080-1½ 540 (600-1½)	8100-2 560 (600-2)

SW-1, 11 JUL 2024 to 08 AUG 2024

SW-1, 11 JUL 2024 to 08 AUG 2024