

VORTAC ALS <b>113.9</b> Chan <b>86</b>	APP CRS <b>142°</b>	Rwy Idg TDZE Apt Elev <b>7540</b>	<b>N/A</b> <b>N/A</b> <b>7540</b>
--	------------------------	--	---

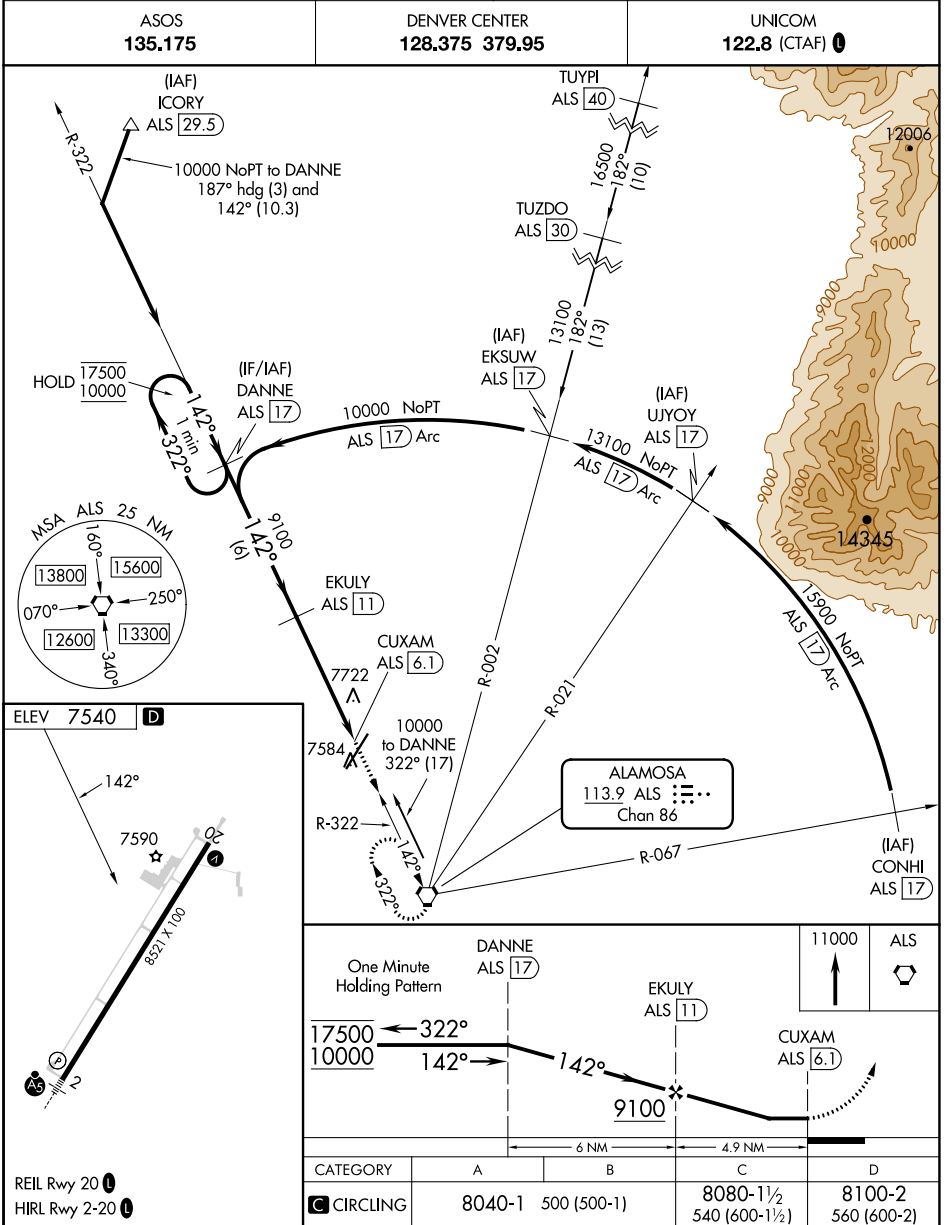
# VOR-B

SAN LUIS VALLEY RGNL/BERGMAN FLD (ALS)

DME required. RADAR required for arrivals at TUYPI.

**▽**  
**✱** -26°C

MISSED APPROACH: Climb to 11000 direct ALS VORTAC and hold, continue climb-in-hold to 11000.



SW-1, 11 JUL 2024 to 08 AUG 2024

SW-1, 11 JUL 2024 to 08 AUG 2024