

# HI-VOR or TACAN RWY 31

VORTAC PNH <b>116.6</b> Chan <b>113</b>	APCH CRS <b>313°</b>	Rwy Idg TDZE Arprt Elev <b>7901</b> <b>3601</b> <b>3607</b>
---	-------------------------	--

[USAF]

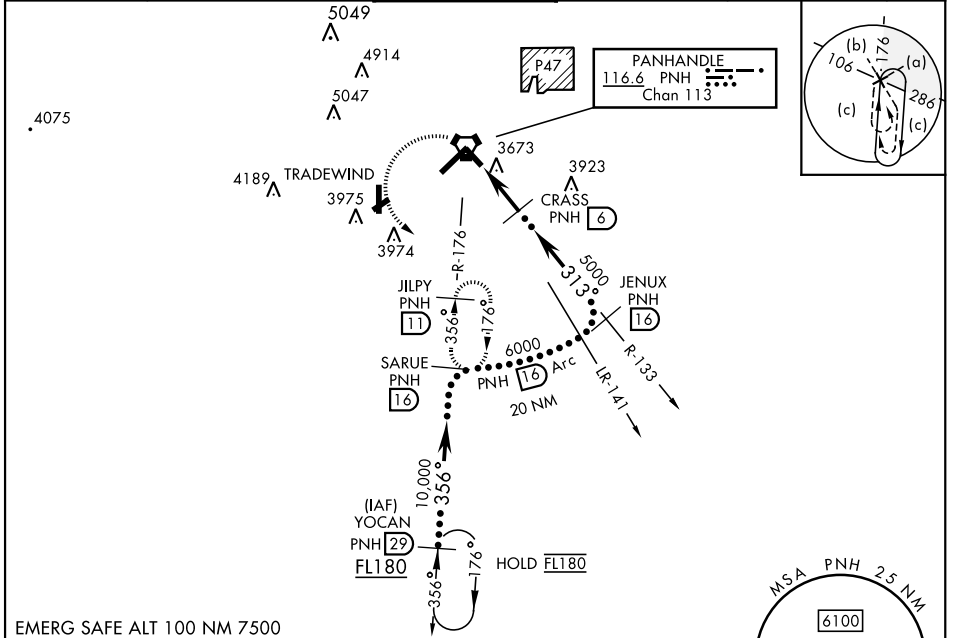
RICK HUSBAND AMARILLO INTL (KAMA)

DME required

When local altimeter setting not received, use Borger altimeter setting.

MISSED APPROACH: Climbing left turn to 5300 on PNH VORTAC R-176 to JILPY/PNH 11 DME and hold.

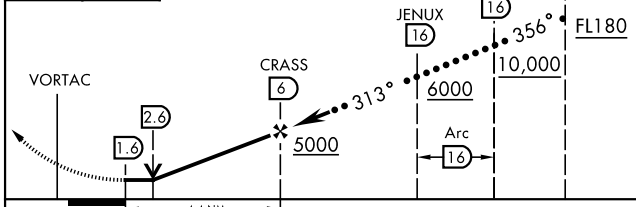
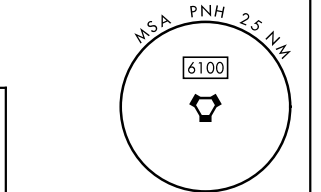
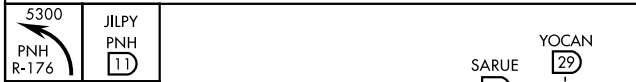
ATIS <b>118.85 350.3</b>	AMARILLO APP CON <b>119.5 307.0</b>	AMARILLO TOWER ★ <b>118.3 (CTAF) 0 257.9</b>	GND CON <b>121.9 348.6</b>	CLNC DEL <b>121.65 239.275</b>	ASR
-----------------------------	--	---	-------------------------------	-----------------------------------	-----



SC-2, 11 JUL 2024 to 08 AUG 2024

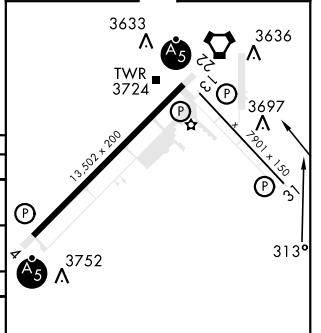
SC-2, 11 JUL 2024 to 08 AUG 2024

EMERG SAFE ALT 100 NM 7500



ELEV	3607	TDZE	3601
------	------	------	------

CATEGORY	C	D	E
S-31	3960-1 359 (400-1)	3960-1¼ 359 (400-1¼)	
CIRCLING	4240-1¾ 633 (500-1¾)	4280-2¼ 673 (700-2¼)	4460-3 853 (900-3)
BORGER ALTIMETER SETTING			
S-31	4120-1¾ 793 (800-2¼)	519 833 (900-2¾)	(600-1¾) 1013 (1100-3)
CIRCLING	4400-2¼ 793 (800-2¼)	4440-2¾ 833 (900-2¾)	4620-3 1013 (1100-3)



HIRL all rwys  
REIL Rwy 13

# HI-VOR or TACAN RWY 31