

AMARILLO, TEXAS

# HI-VOR or TACAN RWY 4

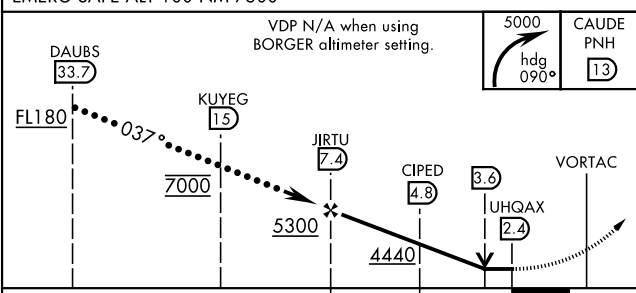
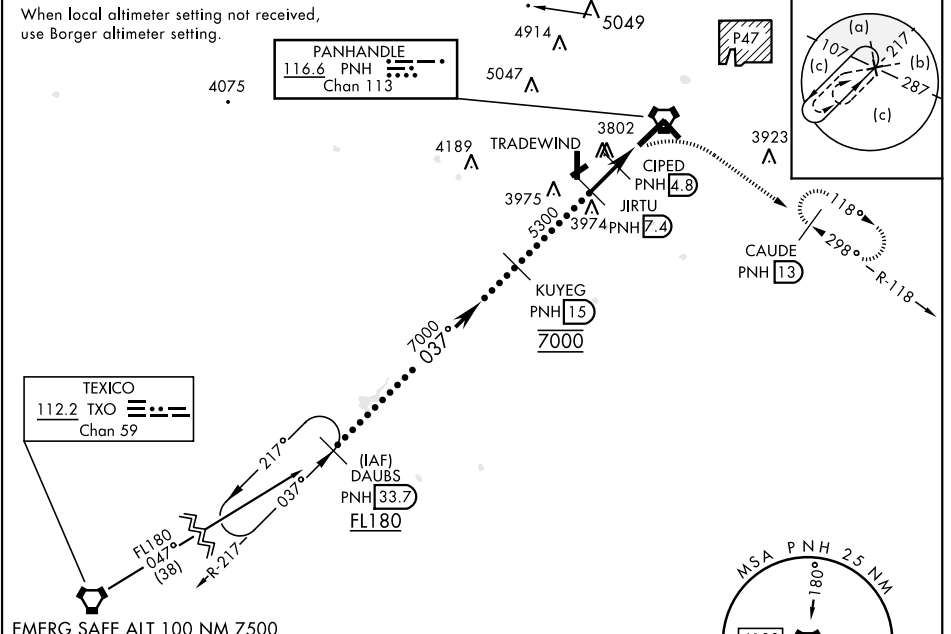
VORTAC PNH <b>116.6</b> Chan <b>113</b>	APCH CRS <b>037°</b>	Rwy Idg <b>13,502</b> TDZE <b>3607</b> Arprt Elev <b>3607</b>	[USAF]	RICK HUSBAND AMARILLO INTL (KAMA)
---	-------------------------	---	--------	-----------------------------------

DME required

▼ \* When ALS inop, increase CAT D vis to 1½ miles; CAT E vis to 1½ miles.  
\*\* When ALS inop, increase CAT CD vis to 1½ miles; CAT E vis to 1¾ miles.

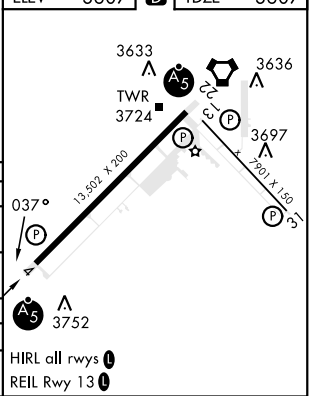
MALSR MISSED APPROACH: Climbing right turn to 5000 on heading 090° and PNH VORTAC R-118 to CAUDE/PNH 13 DME and hold.

ATIS <b>118.85 350.3</b>	AMARILLO APP CON <b>119.5 307.0</b>	AMARILLO TOWER * <b>118.3 (CTAF) 0 257.9</b>	GND CON <b>121.9 348.6</b>	CLNC DEL <b>121.65 239.275</b>	ASR
-----------------------------	--	---	-------------------------------	-----------------------------------	-----



ELEV	3607	TDZE	3607
------	------	------	------

CATEGORY	C	D	E
S-4 *	4040/40 433 (500-¾)	4040/50 433 (500-1)	
CIRCLING	4240-1¾ 633 (700-1¾)	4280-2¼ 673 (700-2¼)	4460-3 853 (900-3)
BORGER ALTIMETER SETTING			
S-4 **	4200-1¼	593	(600-1¼)
CIRCLING	4400-2¼ 793 (900-2¼)	4440-2¾ 833 (900-2¾)	4620-3 1013 (1100-3)



AMARILLO, TEXAS 35°13'N-101°42'W RICK HUSBAND AMARILLO INTL (KAMA)

# HI-VOR or TACAN RWY 4

SC-2, 11 JUL 2024 to 08 AUG 2024

SC-2, 11 JUL 2024 to 08 AUG 2024

Amdt 1A 05DEC19