

APP CRS	Rwy Idg	<b>7901</b>
<b>309°</b>	TDZE	<b>3601</b>
	Apt Elev	<b>3607</b>

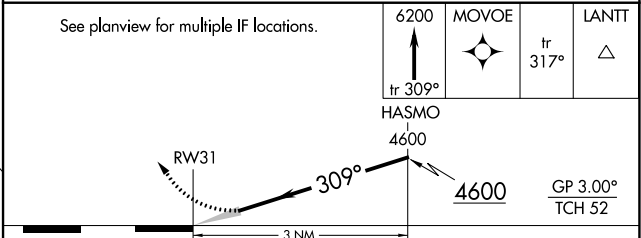
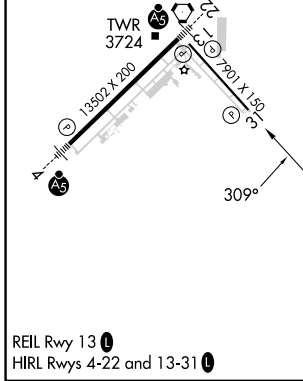
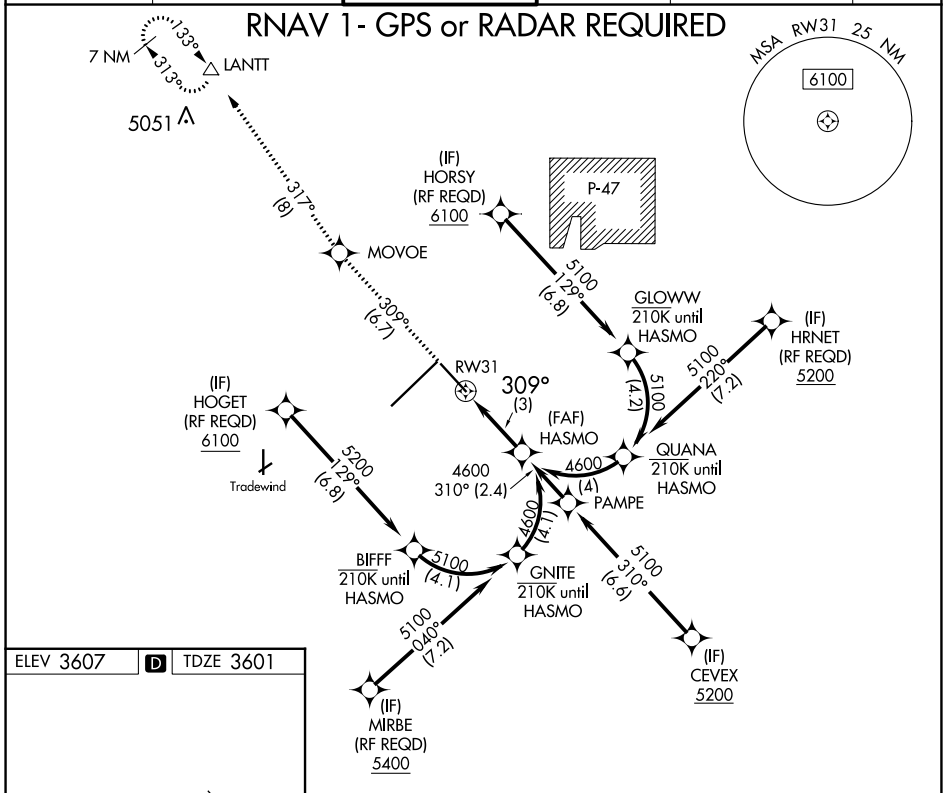
# RNAV (RNP) Z RWY 31

RICK HUSBAND AMARILLO INTL (AMA)

**ASR** For uncompensated Baro-VNAV systems, procedure NA below -14°C (7°F) or above 51°C (124°F). GPS required.

**MISSED APPROACH:** Climb to 6200 on track 309° to MOVVOE and track 317° to LANITT and hold.

ATIS	AMARILLO APP CON*	AMARILLO TOWER*	GND CON	CLNC DEL	UNICOM
<b>118.85 350.3</b>	<b>119.5 307.0</b>	<b>118.3(CTAF) 257.9</b>	<b>121.9 348.6</b>	<b>121.65 239.275</b>	<b>122.95</b>



CATEGORY	A	B	C	D
RNP 0.30 DA		3930-1½	329 (400-1½)	

**AUTHORIZATION REQUIRED**

SC-2, 11 JUL 2024 to 08 AUG 2024

SC-2, 11 JUL 2024 to 08 AUG 2024